

National Insurance number registrations 2016/17

National Insurance numbers (NINo) are generally required by an overseas national looking for work or to claim benefits/tax credits in the UK, this would also include students working part-time and the self-employed.

Figures are based on the recorded registration date on the HMRC National Insurance recording and PAYE system. The NINo application can take weeks, months and in some cases years after arriving in UK. While NINo registrations to foreign nationals give an indication of migration changes, they do not provide a reliable or complete measure of the number of international migrants.

National results

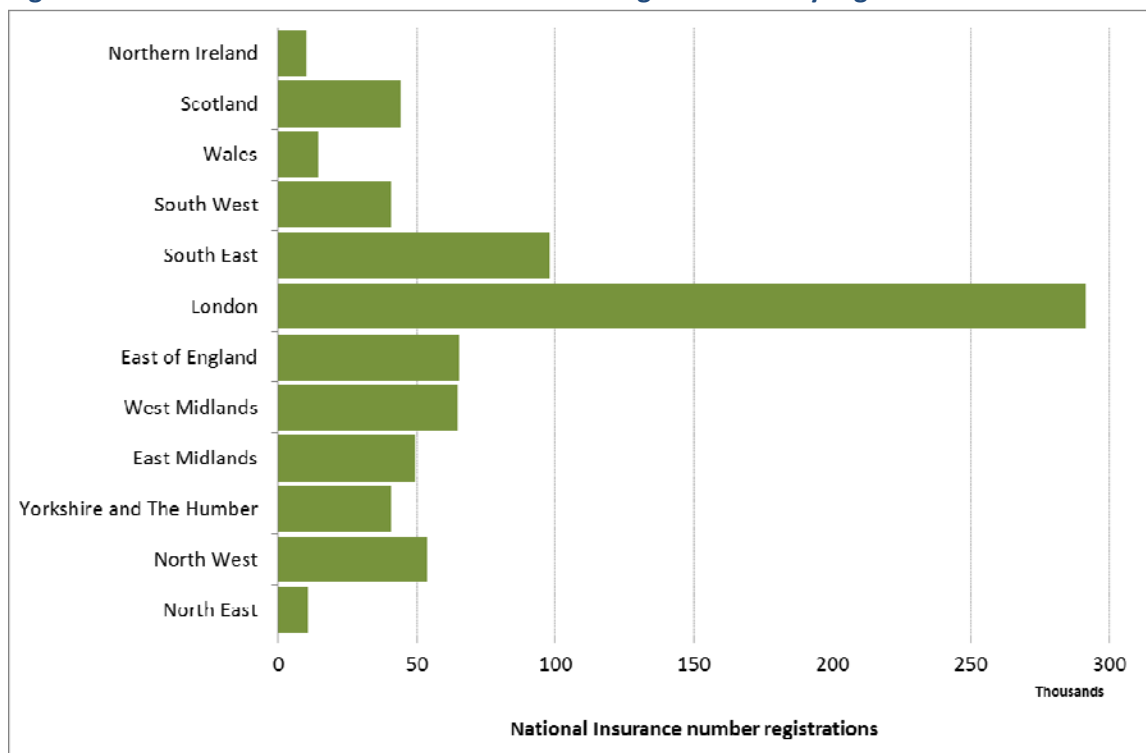
In the UK there were 785,722 NINo registrations to overseas nationals in the 12 months to March 2017. This is a decrease of -40,736 (-5%) on the previous year. Table 1 shows that the largest proportion of NINo registrations were from Romania, followed by Poland.

<i>Country</i>	<i>Registrations year to March</i>	<i>Percent of total applications</i>
Romania	181,882	23.1
Poland	83,589	10.6
Italy	61,751	7.9
Spain	44,075	5.6
Bulgaria	42,052	5.4

Source: Department for Works and Pensions, Crown Copyright 2018

Figure 1 shows that the majority of NINo registrations were in London, while the lowest share was in the North East, the share in the West Midlands region was 8.1%.

Figure1: National Insurance numbers issued to foreign nationals by region 2016-17



Source: Department for Works and Pensions, Crown Copyright 2018

Table 2 shows that Birmingham (18,641), Manchester (12,405) and Edinburgh (11,597) are the only local authorities outside of London featuring in the top 10 destinations of NINo registrations.

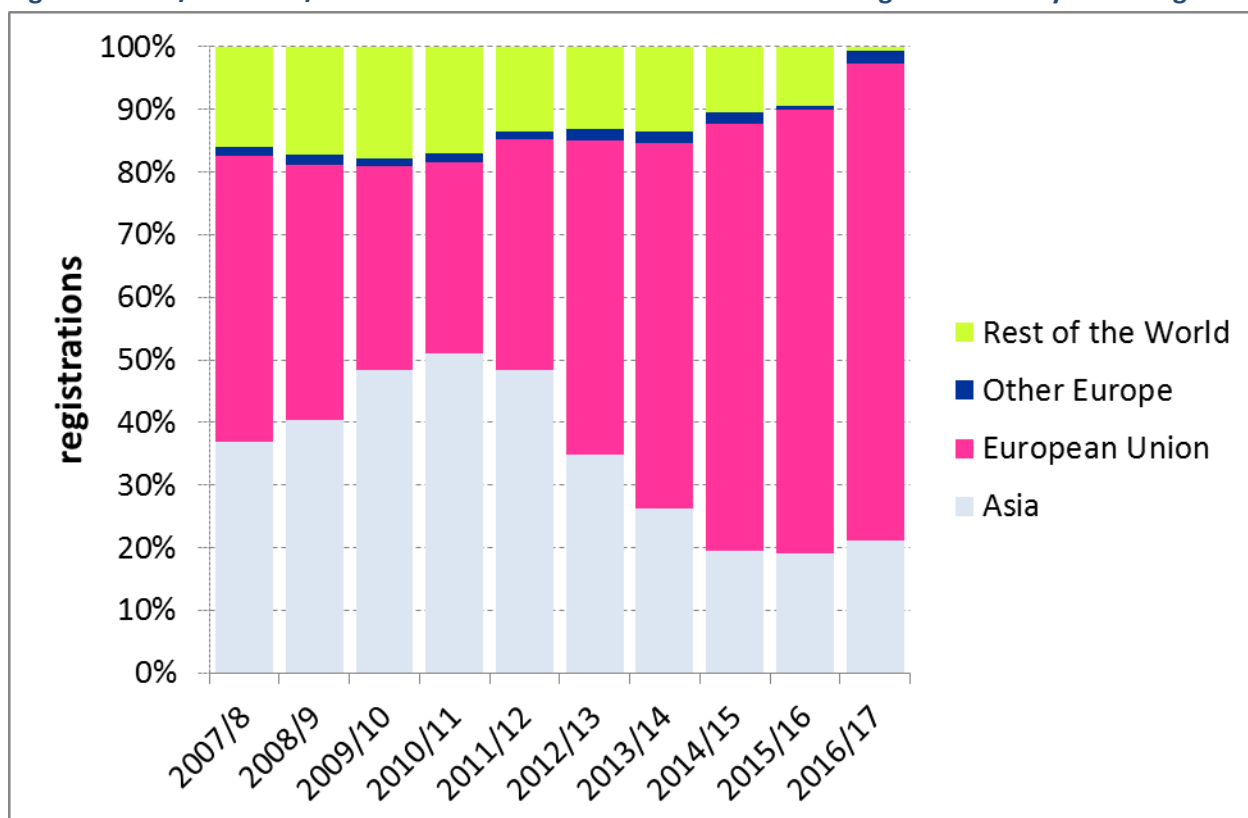
Table 2: Top 10 Destinations	
<i>Local Authority</i>	<i>Registrations year to March</i>
Newham	23,389
Brent	19,470
Birmingham	18,641
Tower Hamlets	16,844
Ealing	13,581
Waltham Forest	13,438
Haringey	13,180
Manchester	12,405
Barnet	11,685
Edinburgh, city of	11,597

Source: Department for Works and Pensions, Crown Copyright 2018

Birmingham results

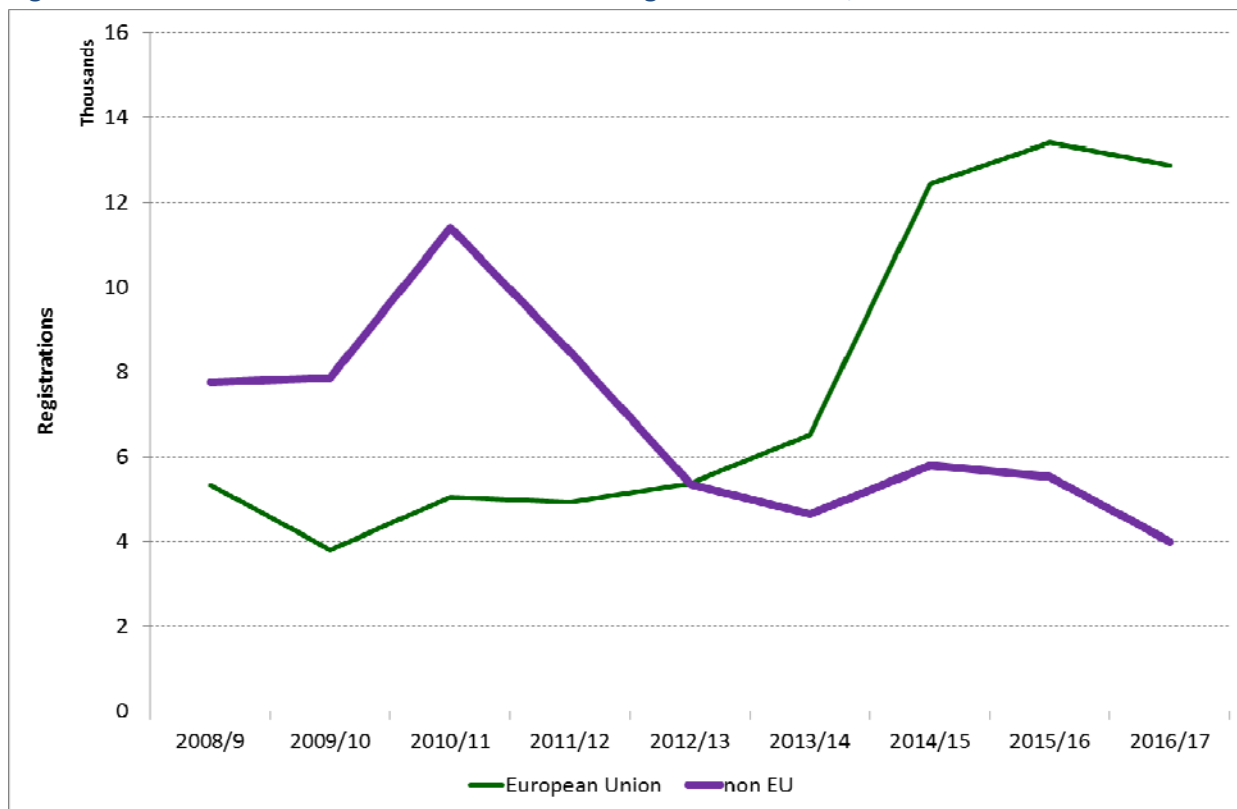
In the 12 months to March 2017, there were 18,641 NINo’s registered to foreign nationals living in Birmingham. This is down 455 (2.4%) on the previous year. Figure 2 shows registrations to foreign nationals by world region. The share of Asian registrations have decreased while those from the EU has increased.

Figure 2: 2002/3 to 2016/17 National Insurance numbers issued to foreign nationals by world region- Birmingham



Source: Department of Works and Pensions, Crown Copyright 2018

Figure 3: National Insurance numbers issued to foreign national 2016/2017



Source: Department of works and pensions, crown copyright 2018

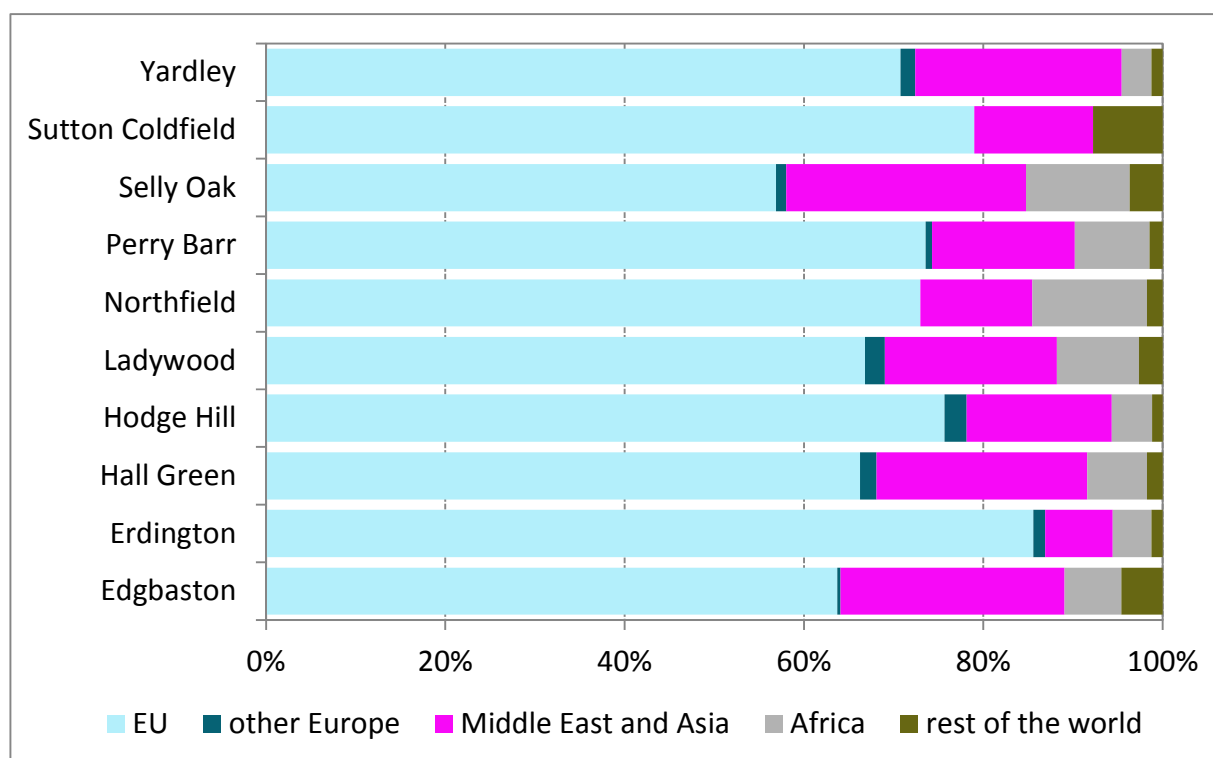
Figure 3 shows that EU applications have been on the increase since 2009/10, although 2016/17 shows a slight decrease. Non- EU applications have been in decline since 2010/11 except for a rise (+1,140) in year to March 2015. Table 5 shows that there were significantly more registrations from Romania than any other country.

Table 3: Top 10 Countries, Birmingham

Country	Registrations 2016/17	Registrations 2015/16	Change	Change percent
Romania	5,549	5,980	-431	-7.2
Italy	1,547	1,148	399	34.8
Poland	1,199	1,597	-398	-24.9
Pakistan	978	1,002	-24	-2.4
Spain	809	809	0	0.0
India	736	727	9	1.2
China	473	474	-1	-0.2
Bulgaria	453	361	92	25.5
France	442	526	-84	-16.0
Portugal	413	393	20	5.1

Source: Department for Works and Pensions, Crown Copyright 2018

Figure 4: Birmingham National Insurance numbers allocated to overseas nationals 2016-17
Constituencies



Source: Department for Works and Pensions, Crown copyright 2018

Table 4: Birmingham National Insurance numbers allocated to overseas nationals 2016-17
Constituencies

Constituency	EU	other Europe	Middle East and Asia	Africa	rest of the world	All countries
Edgbaston	1,054	6	413	105	76	1,654
Erdington	1,390	21	123	70	20	1,624
Hall Green	1,180	33	418	119	31	1,781
Hodge Hill	1,560	50	334	93	24	2,061
Ladywood	3,631	120	1,044	497	143	5,435
Northfield	251	0	43	44	6	344
Perry Barr	1,919	18	416	217	38	2,608
Selly Oak	649	13	305	132	42	1,141
Sutton Coldfield	173	0	29	0	17	219
Yardley	1,026	24	334	48	18	1,450
All Constituencies	12,833	285	3,459	1,325	415	18,841

Figures may not add due to rounding

Source: Department for Works and Pensions, Crown copyright 2018

The highest number of registrations in Birmingham were for the Ladywood Constituency with 5,435 registrations in 2016/16, the lowest number of registrations were in Sutton Coldfield. The EU was the most popular world area for all constituencies. Figure 5 shows the distribution of Nino registrations by MSOA, high numbers of NINO applications are found within the inner areas of Birmingham. Wards to the West of Birmingham have the highest concentrations.

Birmingham National Insurance numbers allocated to overseas nationals 2016/17

Key

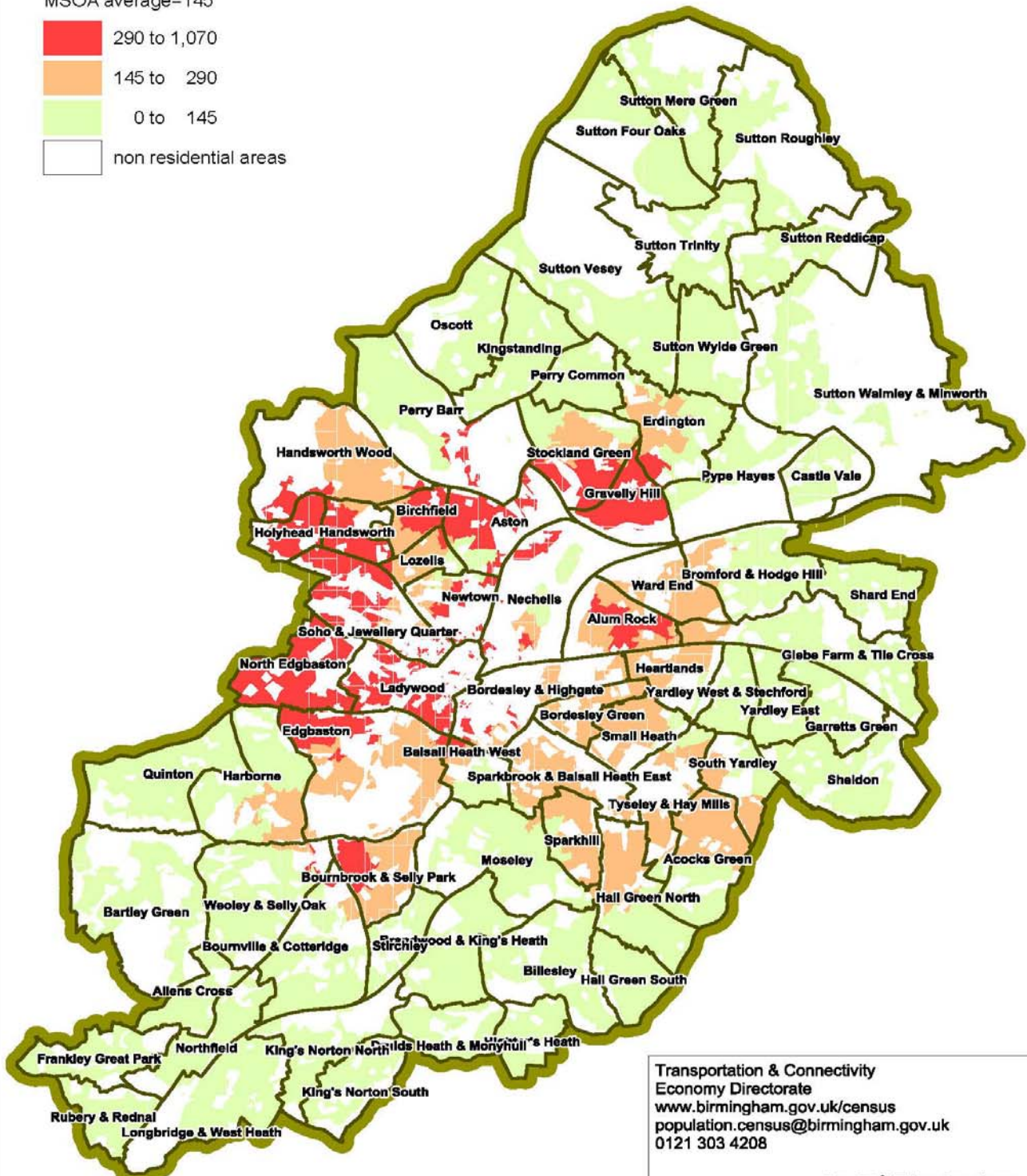
MSOA average=145

290 to 1,070

145 to 290

0 to 145

non residential areas



Transportation & Connectivity
 Economy Directorate
www.birmingham.gov.uk/census
population.census@birmingham.gov.uk
 0121 303 4208

Date: 18/4/2018



© Crown Copyright and database rights 2018 Ordnance Survey 100021326

Table 5: National Insurance number registrations to overseas national

Nationality	2002/3	2003/4	2004/5	2005/6	2006/7	2007/8	2008/9	2009/10	2010/11	2011/12	2012/13	2013/14	2014/15	2015/16	2016/17	change	
																number	percent
Romania	12	23	20	20	32	133	289	265	360	311	395	1,285	5,250	5,980	5,549	31.3	3,083
Italy	44	59	60	82	111	95	143	98	165	208	298	427	824	1,148	1,547	399	34.8
Poland	48	95	683	2,472	4,246	3,217	2,076	1,029	1,262	1,246	1,431	1,401	1,743	1,597	1,199	-398	-24.9
Pakistan	1,631	1,269	1,357	1,387	1,789	1,741	1,860	1,485	2,625	3,026	1,442	911	1,042	1,002	978	-24	-2.4
Spain	66	74	99	94	149	108	146	123	247	331	429	536	796	809	809	0	0.0
India	692	806	700	921	1,262	1,164	1,171	1,787	2,345	1,470	827	616	778	727	736	9	1.2
China	311	520	395	347	390	440	636	509	820	662	392	437	510	474	473	-1	-0.2
Bulgaria	65	54	34	33	32	81	76	80	87	95	93	198	390	361	453	92	25.5
France	137	155	170	186	294	309	363	279	331	320	297	328	441	526	442	-84	-16.0
Portugal	59	76	74	77	112	93	136	85	112	151	235	247	366	393	413	20	5.1
Netherlands	249	316	367	304	287	233	225	172	240	212	257	285	454	496	390	-106	-21.4
Eritrea	17	35	57	145	179	150	180	131	189	114	98	126	243	164	305	141	86.0
Bangladesh	426	373	356	371	475	413	404	597	615	329	240	211	235	302	298	-4	-1.3
Greece	70	76	43	50	54	74	50	41	72	85	169	144	201	253	274	21	8.3
Nigeria	119	132	145	175	238	267	339	360	398	369	231	290	386	301	265	-36	-12.0
Ireland	98	136	118	117	120	89	136	100	188	169	167	226	255	290	258	-32	-11.0
Germany	106	118	132	170	268	225	237	197	194	199	157	139	198	184	231	47	25.5
Iran	206	153	142	251	119	125	156	165	450	194	187	137	193	238	226	-12	-5.0
Hungary	7	8	30	90	115	137	136	89	113	173	224	200	223	229	211	-18	-7.9
Czech Republic	15	6	75	125	136	151	181	158	204	192	224	174	210	190	190	0	0.0
Sudan	26	70	79	60	46	57	43	48	205	87	90	92	123	221	184	-37	-16.7
Norway	43	54	49	32	33	45	70	41	59	61	83	95	153	114	170	56	49.1
Lithuania	8	16	75	152	214	155	180	226	403	350	251	168	231	210	164	-46	-21.9
Syria	10	10	9	13	6	10	11	12	20	23	39	53	95	143	153	10	7.0
Sweden	100	112	104	104	96	116	119	85	80	105	89	104	132	117	125	8	6.8
rest of the world	4,659	4,467	3,185	3,271	3,512	3,452	3,724	3,492	4,655	2,932	2,362	2,319	2,772	2,555	2,586	31	1.2
published total	9,264	9,230	8,578	11,100	14,340	13,121	13,116	11,666	16,467	13,412	10,747	11,189	18,239	19,096	18,641	-455	-2

Source: Department of Works & Pensions, Crown Copyright 2018

Appendix 2

National Insurance Number Allocations to non UK Nationals

The Department for Work and Pensions annually publishes data on National Insurance Numbers (NINOs) allocated to non-UK nationals in local authorities. It includes variables such as nationality, age and gender. NINOs are required for employment/self-employment purposes or to claim benefits or tax credits. The figures cover new registrations; people may have been in the UK for some time before applying for a NI number. There is no data on how many people subsequently leave the UK; a proportion may be short-term migrants. It will not cover all migrants (e.g. children).

A2 and A8 Nationals are from countries that have recently joined the EU. A8 Countries joining in 2004, are Czech Republic, Estonia, Hungary, Latvia, Lithuania, Poland, Slovakia and Slovenia. Cyprus and Malta also joined in 2004 but were not included in the A8. Bulgaria and Romania joined in 2007 and are known as the A2 countries.

April 2018