

Hourly occupancy counts of the car parks at Iron Lane, Stechford took place on four separate days:

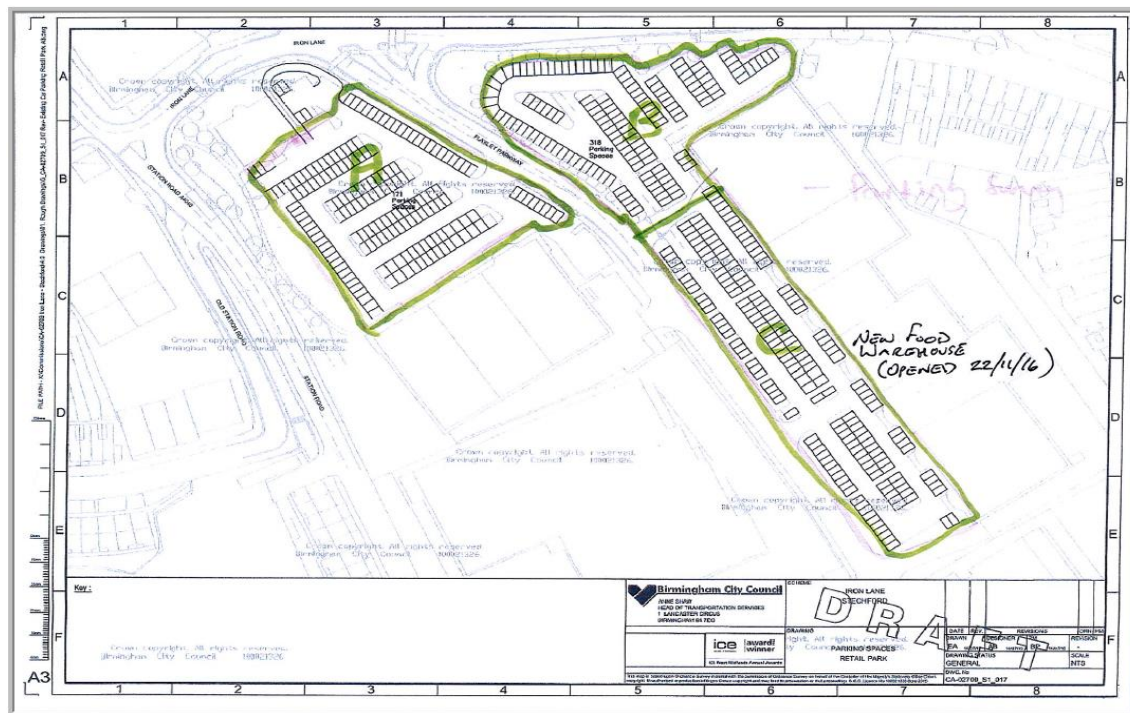
**Thursday 17th November 09:00 - 19:00**

**Saturday 19th November 09:00 - 19:00**

**Monday 21st November 09:00 - 19:00**

**Sunday 27th November 09:00 - 18:00**

The car parks were divided into three sections, as shown on the plan below.



At the start of the first survey counts of the marked car park spaces in each car park were done:

<b>Car Park A</b>	<b>180</b>
<b>Car Park B</b>	<b>135</b>
<b>Car Park C</b>	<b>176</b>

Vehicles queuing to get into the McDonald's Drive-Through were not included in the count.

### Observations

Weather was particularly bad on Monday, 21st November

A new store "Food Warehouse" opened on Tuesday, 22nd November

Friday, 25th November was "Black Friday". At least one store (Currys) was still running its promotion on Sunday 27th

# Hourly Car Park Occupancy Rates

## Iron Lane, Stechford

Hour commencing	Remarks	Car Park A	Occupancy (%)	Car Park B	Occupancy (%)	Car Park C	Occupancy (%)	Car Parks B + C	Occupancy (%)	All Car Parks	Occupancy (%)
09:00	Dry	32	17.8%	3	2.2%	46	26.1%	49	15.8%	81	16.5%
10:00	Dry	40	22.2%	26	19.3%	86	48.9%	112	36.0%	152	31.0%
11:00	Dry	39	21.7%	35	25.9%	119	67.6%	154	49.5%	193	39.3%
12:00	Very heavy rain	50	27.8%	41	30.4%	140	79.5%	181	58.2%	231	47.0%
13:00	Dry	55	30.6%	45	33.3%	118	67.0%	163	52.4%	218	44.4%
14:00	Dry	70	38.9%	44	32.6%	116	65.9%	160	51.4%	230	46.8%
15:00	Dry	37	20.6%	27	20.0%	92	52.3%	119	38.3%	156	31.8%
16:00	Dry	39	21.7%	30	22.2%	94	53.4%	124	39.9%	163	33.2%
17:00	Dry	32	17.8%	36	26.7%	76	43.2%	112	36.0%	144	29.3%
18:00	Dry	32	17.8%	25	18.5%	74	42.0%	99	31.8%	131	26.7%
19:00	Dry	35	19.4%	28	20.7%	48	27.3%	76	24.4%	111	22.6%

# Hourly Car Park Occupancy Rates

## Iron Lane, Stechford

Hour commencing	Remarks	Car Park A Occupancy (%)	Car Park B Occupancy (%)	Car Park C Occupancy (%)	Car Parks B + C Occupancy (%)	All Car Parks Occupancy (%)
09:00	Dry	27 15.0%	8 5.9%	36 20.5%	44 14.1%	71 14.5%
10:00	Dry	42 23.3%	22 16.3%	78 44.3%	100 32.2%	142 28.9%
11:00	Dry	48 26.7%	45 33.3%	97 55.1%	142 45.7%	190 38.7%
12:00	Dry	66 36.7%	61 45.2%	119 67.6%	180 57.9%	246 50.1%
13:00	Dry	67 37.2%	62 45.9%	142 80.7%	204 65.6%	271 55.2%
14:00	Dry	82 45.6%	78 57.8%	147 83.5%	225 72.3%	307 62.5%
15:00	Dry	86 47.8%	71 52.6%	161 91.5%	232 74.6%	318 64.8%
16:00	Dry	71 39.4%	64 47.4%	144 81.8%	208 66.9%	279 56.8%
17:00	Dry	75 41.7%	34 25.2%	96 54.5%	130 41.8%	205 41.8%
18:00	Dry	45 25.0%	19 14.1%	57 32.4%	76 24.4%	121 24.6%
19:00	Dry	17 9.4%	13 9.6%	10 5.7%	23 7.4%	40 8.1%

# Hourly Car Park Occupancy Rates

## Iron Lane, Stechford

Hour commencing	Remarks	Car Park A Occupancy (%)	Car Park B Occupancy (%)	Car Park C Occupancy (%)	Car Parks B + C Occupancy (%)	All Car Parks Occupancy (%)
09:00	Very heavy rain	35 19.4%	13 9.6%	50 28.4%	63 20.3%	98 20.0%
10:00	Very heavy rain	45 25.0%	25 18.5%	45 25.6%	70 22.5%	115 23.4%
11:00	Very heavy rain	59 32.8%	27 20.0%	107 60.8%	134 43.1%	193 39.3%
12:00	Light rain	59 32.8%	44 32.6%	133 75.6%	177 56.9%	236 48.1%
13:00	Very heavy rain	58 32.2%	33 24.4%	130 73.9%	163 52.4%	221 45.0%
14:00	Light rain	63 35.0%	36 26.7%	129 73.3%	165 53.1%	228 46.4%
15:00	Very heavy rain	52 28.9%	26 19.3%	88 50.0%	114 36.7%	166 33.8%
16:00	Light rain	55 30.6%	20 14.8%	81 46.0%	101 32.5%	156 31.8%
17:00	Light rain	36 20.0%	25 18.5%	85 48.3%	110 35.4%	146 29.7%
18:00	Dry	35 19.4%	18 13.3%	88 50.0%	106 34.1%	141 28.7%
19:00	Dry	41 22.8%	20 14.8%	65 36.9%	85 27.3%	126 25.7%

# Hourly Car Park Occupancy Rates

## Iron Lane, Stechford

Hour commencing	Remarks	Car Park A	Occupancy (%)	Car Park B	Occupancy (%)	Car Park C	Occupancy (%)	Car Parks B + C	Occupancy (%)	All Car Parks	Occupancy (%)
09:00	Dry	10	5.6%	3	2.2%	6	3.4%	9	2.9%	19	3.9%
10:00	Dry	29	16.1%	4	3.0%	21	11.9%	25	8.0%	54	11.0%
11:00	Dry	75	41.7%	35	25.9%	148	84.1%	183	58.8%	258	52.5%
12:00	Dry	98	54.4%	62	45.9%	151	85.8%	213	68.5%	311	63.3%
13:00	Dry	100	55.6%	84	62.2%	150	85.2%	234	75.2%	334	68.0%
14:00	Dry	105	58.3%	81	60.0%	177	100.6%	258	83.0%	363	73.9%
15:00	Dry	120	66.7%	57	42.2%	171	97.2%	228	73.3%	348	70.9%
16:00	Dry	84	46.7%	49	36.3%	121	68.8%	170	54.7%	254	51.7%
17:00	Dry	23	12.8%	11	8.1%	26	14.8%	37	11.9%	60	12.2%
18:00	Dry	19	10.6%	4	3.0%	3	1.7%	7	2.3%	26	5.3%