



ADULT SOCIAL CARE

Care Centres Consultation

Phase 3

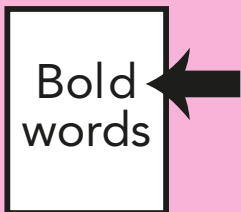
Easy Read



This is an Easy Read version of some information. It may not include all of the information but it will tell you about the important parts.



This Easy Read booklet uses easier words and pictures. Some people may still want help to read it.



Some words are in **bold** - this means the writing is thicker and darker. These are important words in the document.



Pink and underlined words show links to websites and email addresses. You can click on these links on a computer.

What did the previous 2 Consultations Tell Us?



There was not enough financial information for each option



We listened



We had a further consultation period to provide more financial information.

The care centres

The Council currently operates 128 beds across the 3 Care Centres, each of which accommodates 64 beds.

The Perry Trees Centre



**The Anne Marie
Howes Centre**

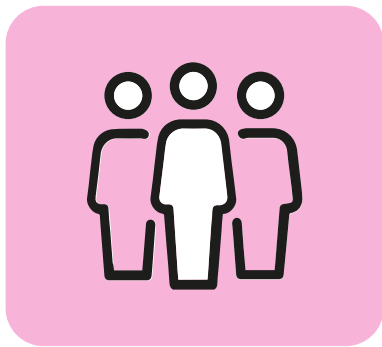


The Kenrick Centre

Why are we reviewing these services?



The Council has to save money.



The Council needs to reduce how much money we spend on the three care centres.

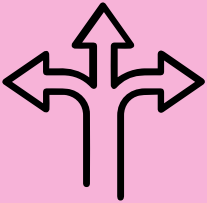


The Council's service are expensive.

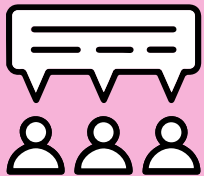
Why are we consulting again?



- We have looked at all the responses from the previous consultations



- We would like to share an alternative option with you.



- We would like to know what you think of this option



- There will be meetings you can come to so we can explain the alternative option.

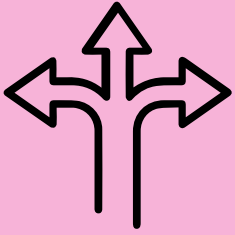


- You will be asked at these meetings to tell us what you think of the options.



- You can also complete a survey on the internet to tell us your views.

Recap of the previous options

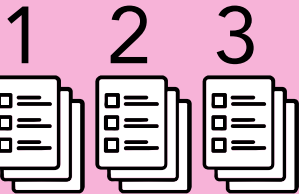


- There are a lot of different ways the Council could change the care centres.

12

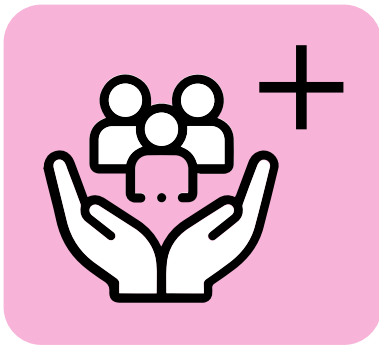


- The Council previously looked at **12 different options**.



The options were in **3 groups**:

- **Group 1**
The Council keeps all the current Care Centres.
- **Group 2**
The Council keeps some of the current Care Centres.
- **Group 3**
The Council does not keep any of the current Care Centres.



Option 1a: Complex Care

What this means

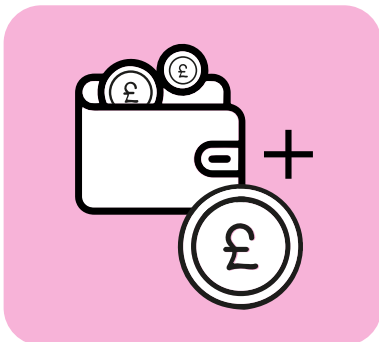
The Council would provide care for people who need extra support.



Option 1b: Hospital Discharge

What this means

The Council would provide care for people who need support when they come out of hospital.



Option 1c: Full Cost Recovery

What this means

The Council would carry on providing care but would charge everyone more for this.





Option 1d: Efficiencies

What this means

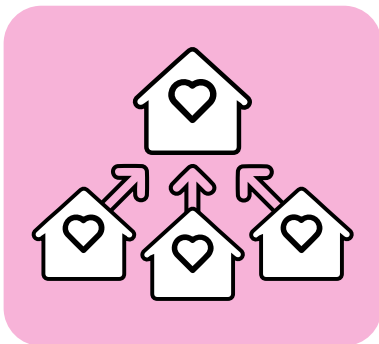
The Council would carry on providing care but would have to make changes to save money.



Option 1e: Do Nothing

What this means

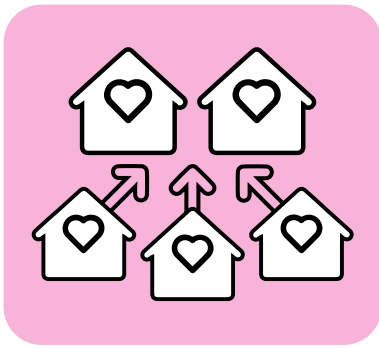
There would be no change to the service.



Option 2a Anne Marie Howes, 2b Perry Tree & 2c Kenrick: Only have a Single Care Centre

What does this mean

The Council would carry on providing care but only in one care centre.



Option 2d: Only Provide Services from 2 Care Centres

What does this mean

The Council would carry on providing care but only in two care centres.



Option 3a: Sale as a 'Going Concern'

What does this mean

The Council would no longer provide care in the care centres.



The Council would sell the buildings and equipment to a new care provider.



Option 3b: Close the Services and Sell the Empty Buildings

What this means

The Council would no longer provide care in the care centres.

The care centres would close and be sold.



Option 3c: Close the Services and Rent the Empty Buildings

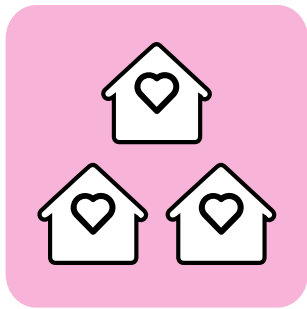
What this means

The Council would no longer provide care in the care centres.

The care centres would close and be rented out.

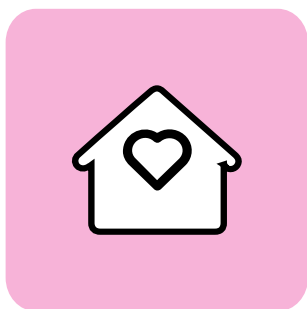


Alternative Option

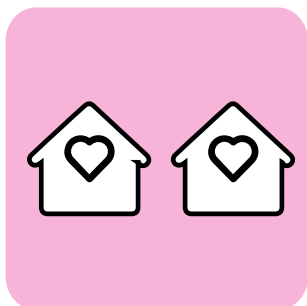


Delivery of Residential and respite care in Kenrick Centre and Integrated intermediate Care in Perry Tree and Ann Marie Howes.

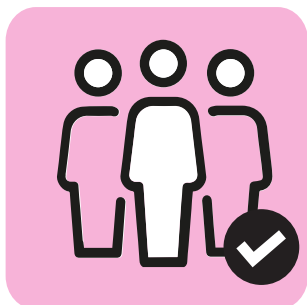
What Does this mean?



The Council will provide long term residential care and respite care from Kenrick Centre



Ann Marie Howes and Perry Tree would become integrated intermediate Care beds

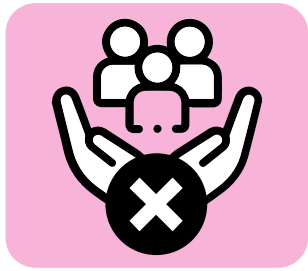


There would be enough space in the Kenrick Centre for all long term residents currently living in the 3 Care Centres



This option will currently save a minimum of £2.8m against the savings target.

What does the **revised option** mean for me?



The Council would carry on providing residential Care from the Kenrick Centre



You might be worried but the social worker will support you and help you find a new care home if you do not wish to move to Kenrick Centre.

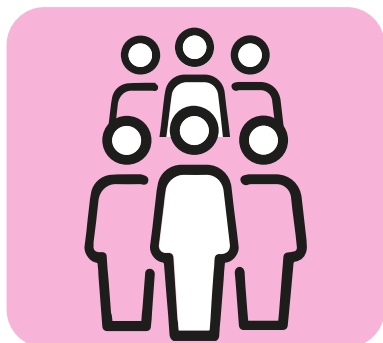


The social worker will make sure you have information to help you through the move process



You might be worried about meeting new people but the social worker and Care Centre Staff will help you with this.

What support is available during the consultation?



There will be a number of people at the resident meetings to help you share your views.



Care Centre staff will be at the resident meetings to help you.



There will be other meetings for your families and opportunities for other people who are interested in sharing their views.

How to have your say



Come to one of our meetings.



[Consultation web page](#)

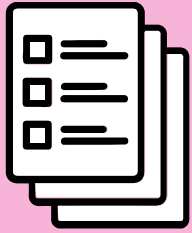


[Be Heard questionnaire](#)

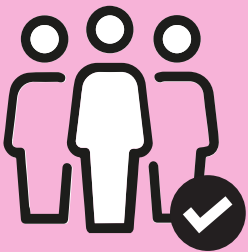


By emailing the dedicated mailbox
[CareCentreConsultation@
birmingham.gov.uk](mailto:CareCentreConsultation@birmingham.gov.uk)

Resident Meeting Dates



If you are a current long term resident of one of our Care Centres, you will get a letter inviting you to a consultation meeting at your care home.



As well as your consultation meeting, there will be staff in the care centres to support you during the consultation.



The consultation period will run from Midday on 30th June 2025 to 25th July 2025.



If you are not a long term resident of one of the care centres, details of how you can get involved are [here](#).