



# ADULT SOCIAL CARE

## Care Centres Consultation

### Phase 2

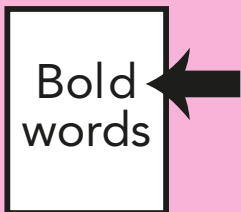
# Easy Read



This is an Easy Read version of some information. It may not include all of the information but it will tell you about the important parts.



This Easy Read booklet uses easier words and pictures. Some people may still want help to read it.



Some words are in **bold** - this means the writing is thicker and darker. These are important words in the document.



Pink and underlined words show links to websites and email addresses. You can click on these links on a computer.

# What did the First Consultation Tell Us?



There was not enough financial information for each option



We have listened



We are having a further consultation period to provide more financial information.

# The care centres

The Council currently operates 128 beds across the 3 Care Centres, each of which accommodates 64 beds.

The Perry Tree Centre



The Kenrick Centre

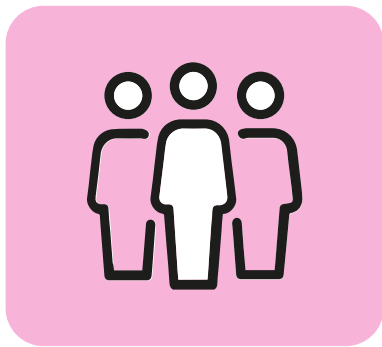


The Ann Marie  
Howes Centre

# Why are we reviewing these services?



The Council has to save money.

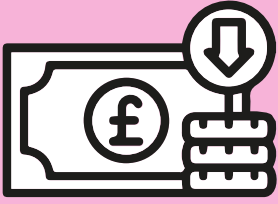


The Council needs to reduce how much money we spend on the three care centres.



The Council's service are expensive.

# Why are we consulting again?



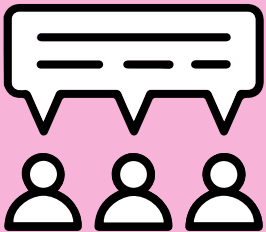
- We have looked at how we could change the care centres to save money.



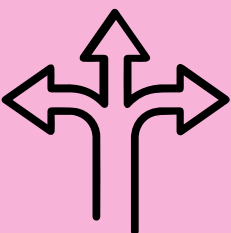
- We have looked at a number of options.



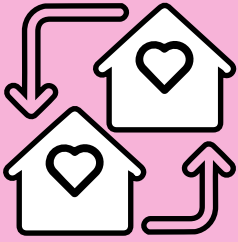
- We want to provide more financial information.



- We would like to know what you think of these options.



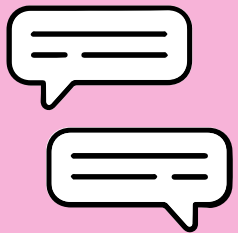
- Some options mean the service you get would be different.



- Some options may mean you need to move to another care home.



- There will be meetings you can come to so we can explain the financial information for each option.



- You will be asked at these meetings to tell us what you think of the options.

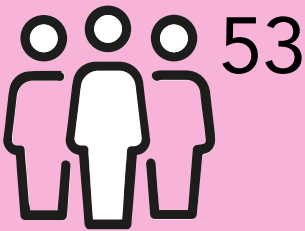


- You can complete a survey on the internet to tell us your views.

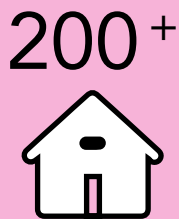
# What did the **review** tell us?



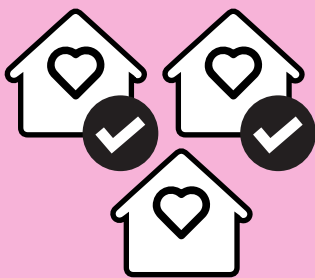
- The Council looked at our care centres services to see how we could save money.



- The Council's care centres are home to 53 people.



- The Council runs three care centres, but there are over 200 other care homes in Birmingham.



- The Council gives good quality care at two of the care centres. The other centre needs some improvements.



- Some people that live in the care centres pay towards the cost. Most people don't pay the full amount that it costs the Council.



4x



- The Council services cost four times more than other similar services.

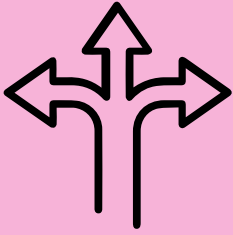


- The Council spends a lot more on staff at the care centres than other care homes do.



- The care centres are used to help people to recover after a hospital stay. The Council and the NHS would like this to continue.

# Summary of **three main options**

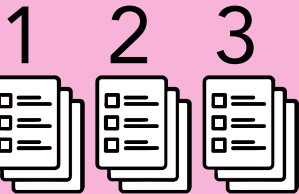


- There are a lot of different ways the Council could change the care centres.

12

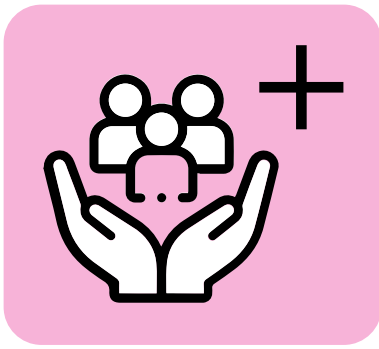


- The Council has looked at **12 different options**.



The options are in **3 groups**:

- **Group 1**  
The Council keeps all the current Care Centres.
- **Group 2**  
The Council keeps some of the current Care Centres.
- **Group 3**  
The Council does not keep any of the current Care Centres.



## Option 1a: Complex Care

### What this means



The Council would provide care for people who need extra support.



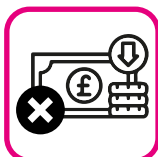
There are lots of people in Birmingham that need this type of care.



This would need more staff and more training for staff.



You could stay in your current home if you wanted to.



This would not save the amount of money the Council needs to.



This option would cost an additional £8.1m to implement.



## Option 1b: Hospital Discharge

### What this means

The Council would provide care for people who need support when they come out of hospital.



There are lots of people in Birmingham that need this type of care.



You could stay in your current home if you wanted to.



Would help the NHS to support people who need to come home from hospital.

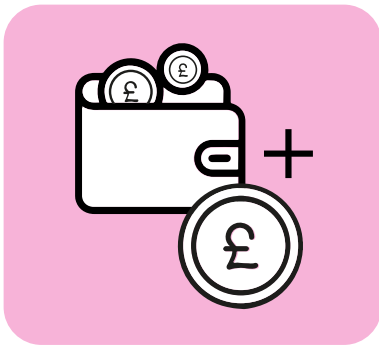


Would not save the amount of money the Council needs to.



This option would cost an additional £5.0m to implement.





## Option 1c: Full Cost Recovery

### What this means



The Council would carry on providing care but would charge everyone more for this.



There would need to be more people that pay for the full cost of their care living at the care centres.



You could stay in your current home if you had enough money to pay the new price.



Some changes might be needed to improve the service.



Would not save the amount of money the Council needs to.



This option is not financially viable as the Council is only allowed to charge people what they can afford to pay.



## Option 1d: Efficiencies

### What this means



The Council would carry on providing care but would have to make changes to save money.



Changes might include less staff, changes to meals or changes to the building.



You could stay in your current home but you may notice changes.



Would not save the amount of money the Council needs to.



This option would cost an additional £3.5 m to implement.



## Option 1e: Do Nothing

### What this means



There would be no change to the service.



You could stay in your current home.



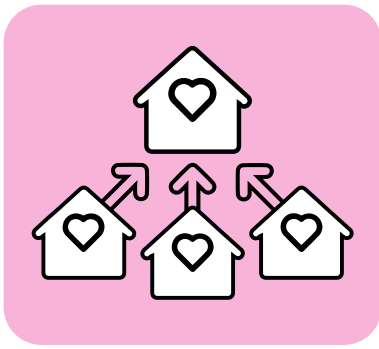
This would not save the amount of money the Council needs to.



The Council would have to save money in other ways which may affect you and other people.



This option would cost an additional £5.9m to implement.



## Option 2a Anne Marie Howes, 2b Perry Tree & 2c Kenrick: Only have a Single Care Centre

### What does this means

The Council would carry on providing care but only in one care centre.

One care centre will be chosen. Residents from the other care centres would have to move to that centre.

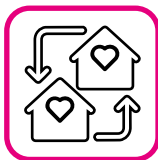
There would be enough space for everyone in the new care centre.

This would not save the amount of money the Council needs to.

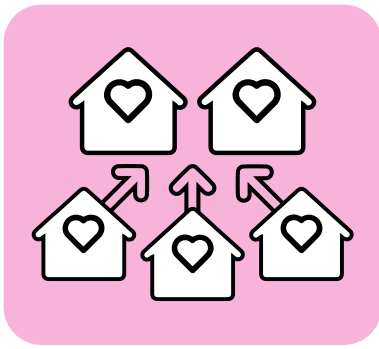
Keeping only Ann Marie Howes would cost an additional £3.4m.

Keeping only Perry Tree would cost an additional £3.0m.

Keeping only Kenrick Centre would cost an additional £2.4m.







## Option 2d: Only Provide Services from 2 Care Centres

### What does this means

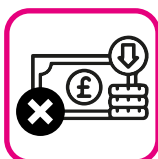
The Council would carry on providing care but only in two care centres.

Two care centres will be chosen. Residents from the other care centre would have to move to those care centres.

There would be enough space for everyone in the two care centres.

This would not save the amount of money the Council needs to.

This option would cost an additional £4.9m to implement .





## Option 3a: Sale as a 'Going Concern'

### What does this means



The Council would no longer provide care in the care centres.



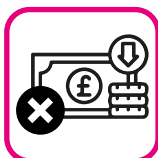
The Council would sell the buildings and equipment to a new care provider.



Council staff that wanted to, would start working for the new care provider.



You could stay in your current home to start with. The new provider may make changes later.



This would not save the amount of money the Council needs to.



This option would cost an additional £4.6m to implement.



## Option 3b: Close the Services and Sell the Empty Buildings

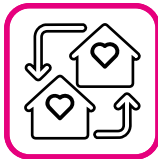
### What this means



The Council would no longer provide care in the care centres.



The care centres would close and be sold.



You would have to move to a new care home. The Council would help you find a new home.



The Council may sell to the NHS, as they already run services from the care centres.



This would not save the amount of money the Council needs to.



This option would cost an additional £0.8m to implement.



## Option 3c: Close the Services and Rent the Empty Buildings

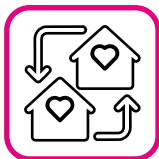
### What this means



The Council would no longer provide care in the care centres.



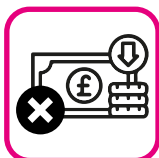
The care centres would close and be rented out.



You would have to move to a new care home. The Council would help you find a new home.



The Council may rent to the NHS, as they already run services from the care centres.



This would save the most money for the Council.

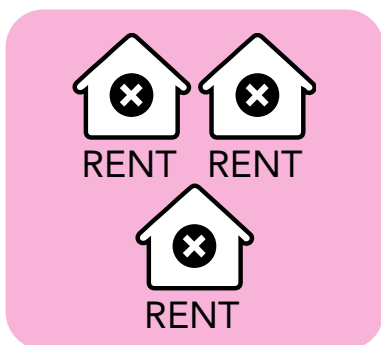


This option would cost an additional £0.6m to implement.

# Preferred Option



Option 3c (renting the care centres) will make the biggest saving to the Council.



The Council would rent all the buildings.

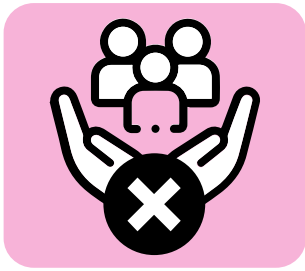


The Council would offer the buildings to the NHS first. This is so we can carry on helping people when they come out of hospital.



This would need to be agreed with the group of Councillors who look after buildings and land that have been given as a gift to the Council.

# What does the **preferred option** mean for me?



We know it will be difficult if your current care home has to close.



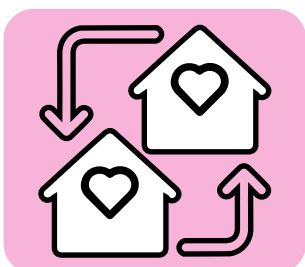
You might be worried about where you are going to live, but the social worker will support you and help you find a new care home.



The social worker will make sure you have information to help you choose a new home.



There are lots of care homes in and around Birmingham that you may be able to choose from if they have an empty room.



You might want to move to another area to be near friends or family and the Council will support you with this.

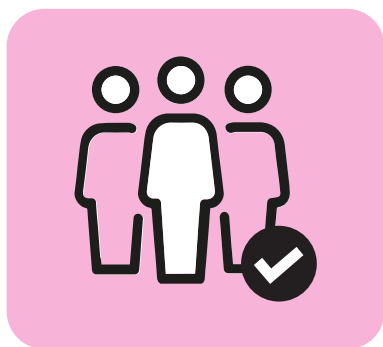


You might be worried about meeting new people but the new care home and the social worker will help you with this.

# What support is available during the consultation?



There will be a number of people at the resident meetings to help you share your views.



Care Centre staff will be at the resident meetings to help you.



There will be other meetings for your families and other people who are interested in sharing their views.

# How to have your say



Come to one of our meetings.



[Consultation web page](#)



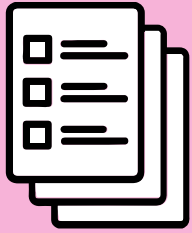
[Be Heard questionnaire](#)



By emailing the dedicated mailbox  
[CareCentreConsultation@  
birmingham.gov.uk](mailto:CareCentreConsultation@birmingham.gov.uk)



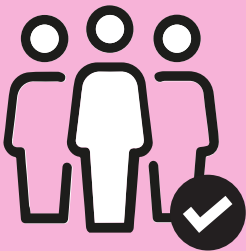
# Resident Meeting Dates



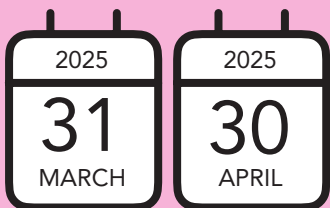
If you are a current long term resident of one of our Care Centres, you will get a letter inviting you to a consultation meeting at your care home.



You might want to attend some of the other meetings. There is a list of these on our [website](#) or at Reception in your care home.



As well as your consultation meeting, there will be staff in the care centres to support you during the consultation.



The consultation period will run from 31st March 2025 to 30th April 2025.



If you are not a long term resident of one of the care centres, you can get a list of consultation meetings [here](#).