

# GYPSY, ROMA & TRAVELLERS COMMUNITY HEALTH PROFILE

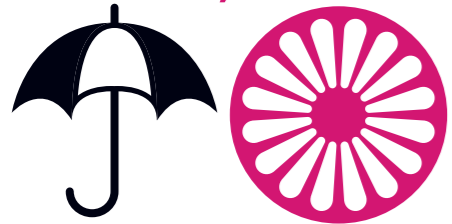


## SUMMARY OF KEY INEQUALITIES

This infographic highlights some of the key findings from the **Gypsies, Roma and Travellers Community Health Profile** as a starting point to understanding the communities health and wellbeing needs. To learn more, **read the full report**.

## DEFINING THE POPULATION

### GYPSY, ROMA & TRAVELLERS



IS A UMBRELLA TERM USED TO REFER TO 'GYPSIES' INCLUDING ENGLISH SCOTTISH AND WELSH GYPSIES TRAVELLERS & OTHER ROMANY PEOPLE 'IRISH TRAVELLERS' & 'ROMA' FROM CENTRAL & EASTERN EUROPE

## GETTING THE BEST START IN LIFE



CHILDREN OF 'GYPSY/IRISH TRAVELLER' ETHNICITY HAD HIGHER EXPERIENCE OF **60% TOOTH DECAY** COMPARED TO **23%** OF ALL CHILDREN IN ENGLAND

GYPSY ROMA | TRAVELLER OF IRISH HERITAGE

**2.1X | 2.6X**



CHILDREN MORE LIKELY TO BE LIVING IN STATE CARE IN ENGLAND THAN ALL OTHER ETHNIC GROUPS

## MENTAL WELLNESS & BALANCE



**28%** OF WHITE GYPSY OR IRISH TRAVELLER ETHNICITY  
**12%** OF WHITE BRITISH/NORTHERN IRISH PEOPLE  
REPORTED FEELING ISOLATED FROM OTHERS

## MENTAL WELLNESS & BALANCE



**43%** ENGLISH ROMANY GYPSIES AND IRISH TRAVELLERS IN THE UK IN 2018 AND 2019 EXPERIENCED HARASSMENT BECAUSE OF BEING 'ROMA/TRAVELLER'

## ACTIVE AT EVERY AGE & ABILITY

**23%** WHITE GYPSIES OR IRISH TRAVELLERS IN ENGLAND HAD PROBLEMS WITH PHYSICAL MOBILITY  
**14%** WHITE BRITISH

## HEALTHY & AFFORDABLE FOOD



**7%** ENGLISH ROMANY GYPSIES AND IRISH TRAVELLERS IN THE UK WENT TO BED HUNGRY IN THE PAST MONTH



AT LEAST ONCE BECAUSE THERE WAS NOT ENOUGH MONEY FOR FOOD

## LIVING, WORKING & LEARNING WELL

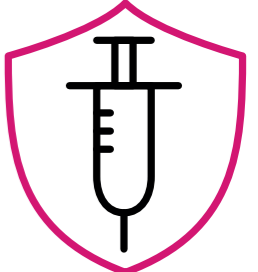


PEOPLE FROM GYPSY, ROMA OR TRAVELLER COMMUNITIES WERE MORE LIKELY TO LIVE IN OVERCROWDED ACCOMMODATION IN POOR CONDITIONS.

## PROTECT & DETECT

### BARRIERS TO VACCINE UPTAKE

POOR HEALTH LITERACY  
DISTRUST IN HEALTHCARE  
STIGMA WITHIN THE COMMUNITY  
FALSE INFORMATION ON SOCIAL MEDIA



## AGING & DYING WELL

### LIFE EXPECTANCY IN THE UK

GYPSIES AND TRAVELLERS **10-12 YEARS LESS** ROMA **2-10 YEARS LESS**

THAN GENERAL POPULATION

## CONTRIBUTING TO A GREEN & SUSTAINABLE FUTURE

### LOWEST LEVELS OF ACCESS TO OUTDOOR SPACE

GYPSY / TRAVELLER **68%** | ROMA **54%**



OF ALL ETHNIC GROUPS IN 2021

We Want to Hear From You! Please share your feedback on this report and relevant personal experiences by emailing: [CommunitiesTeam@birmingham.gov.uk](mailto:CommunitiesTeam@birmingham.gov.uk)