



# IPC Champion Role

# Infection prevention and Control

- To protect residents and staff from infection it is important that the risk is eliminated, reduced or managed effectively.
- The acquisition of infection as a result of hospital or other health care treatment has important implications both for the residents affected and the organisation concerned.



# Infection prevention and Control

- HCAI's are seen as an important quality indicator and as such their prevention is key to ensuring that services provided by the NHS/care providers are of a high quality.



# IPC Champions

Champions can focus on specific areas of IPC and aim to promote and maintain a culture in which IPC is of the highest **importance**:

Key role within the care setting

Someone who is passionate and enthusiastic about safe infection prevention and control.

A role model using their knowledge to influence best practice within their workplace.



# IPC Champions

An IPC Champion can be anyone with an interest in infection prevention and control;

- Care worker
- Senior care worker
- Care coordinator
- Manager/Deputy manager
- Registered nurse
- Activities coordinator
- Healthcare assistant
- Cleaner / Housekeeper
- Maintenance staff
- Administration staff



# IPC Champions



IPC Champion Laura from Castle Croft encouraging visitors to use the Hand Hygiene facilities on entering the premises

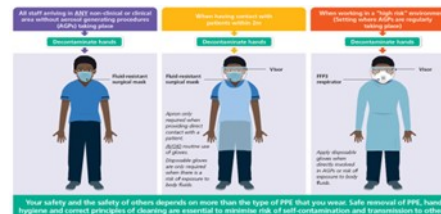


Best Care  
Healthy Communities



# IPC Champions

- The IPC Champion will help create and maintain an environment, which will minimise the risk of infection and ensure the safety of residents, service users and staff



# IPC Champions

- The IPC champion will be an essential link for the care home and IPC
- Promote best IPC and challenge non compliance
- Undertake IPC audits and identify areas for improvement.
- Help maintain and improve IPC standard





# IPC Champions

- Develop their IPC knowledge to empower them to undertake the role confidently
- Will ensure effective infection prevention and control and decontamination are embedded into everyday practice.
- Attend IPC meetings to keep up to and promoting best IPC practice across Birmingham's adult social care sector



# IPC Champions

Benefits to you.

- Increase IPC Knowledge
- Enable the sharing of Knowledge and skills
- Representative for the organisation
- Certificate and Badge
- CV/personal development
- Networking



# IPC Champions

Any  
Questions



Best Care  
Healthy Communities