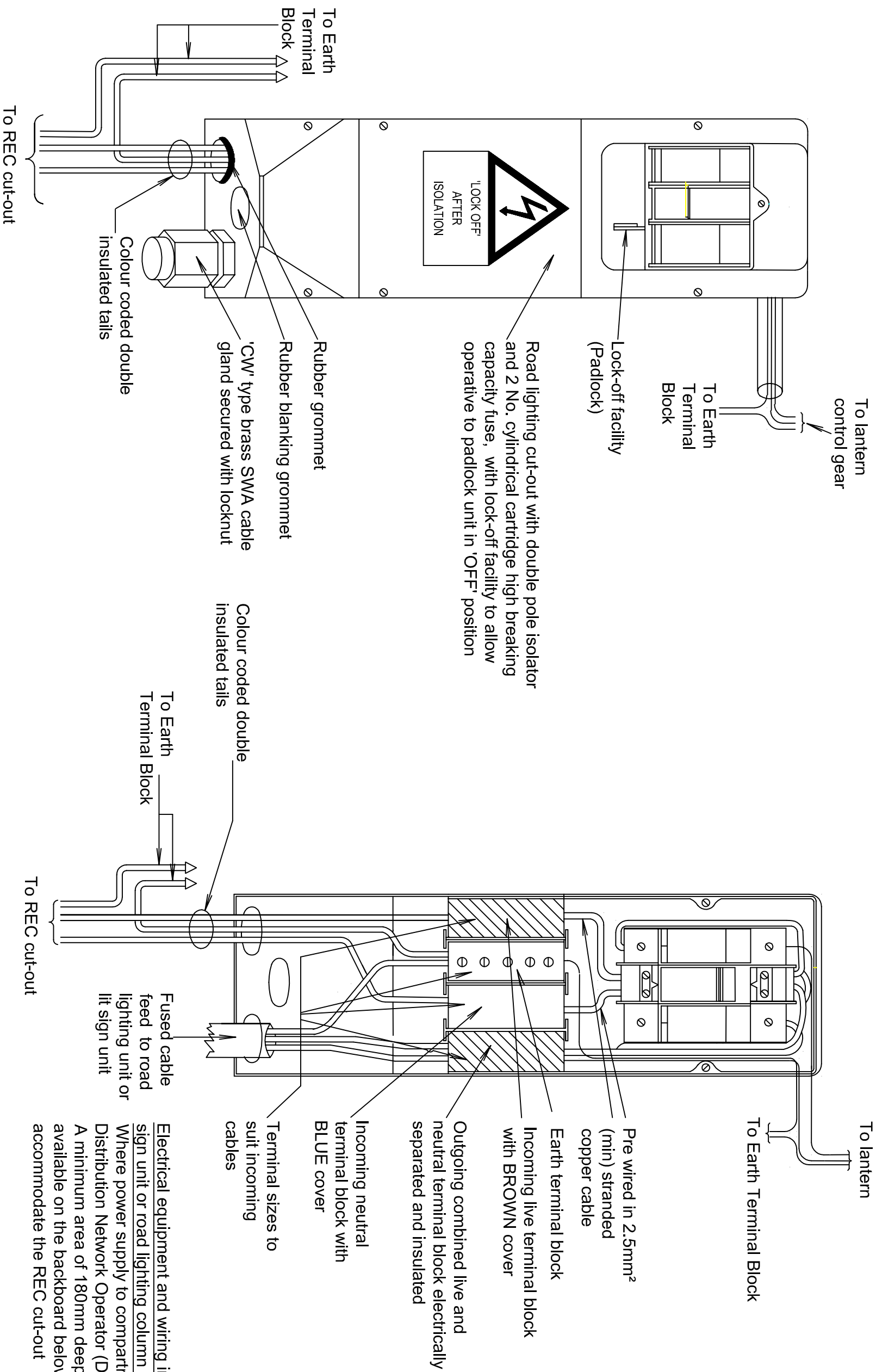


HIGHWAY WORKS DETAILS

VIEW WITH COVER REMOVED



Notes :-

1. This drawing is to be read in conjunction with Standard Detail Sheet HW/14.02
2. Sizes of incoming cables are stated on schematic layout drawings.



SCHEME
STANDARD DETAIL SHEETS

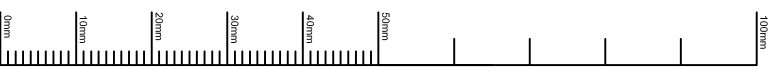


DRAWING
TERMINATION OF CABLES IN
BASE COMPARTMENTS
TYPE B2A

This detail is controlled by Birmingham City Council. Email - Transport.Projects@birmingham.gov.uk

| | | | | |
|----------------|------|----------|----|----------|
| DATE | REV. | DESIGNER | PM | REVISION |
| 2013 | B | TE | PP | B |
| 2010 | A | TE | PP | B |
| 2007 | - | TE | PP | B |
| DRAWN | | DESIGNER | | REVISION |
| DH | | TE | | B |
| DRAWING STATUS | | SCALE | | NTS |
| GENERAL | | SCALE | | NTS |
| DWG. NO | | SCALE | | NTS |
| HW/14.07 | | SCALE | | NTS |

Electrical equipment and wiring in base compartment of lit sign unit or road lighting column Installation:-
Where power supply to compartment is to be made by Distribution Network Operator (DNO)
A minimum area of 180mm deep x 100mm wide shall be available on the backboard below this unit, to accommodate the REC cut-out



A3

