

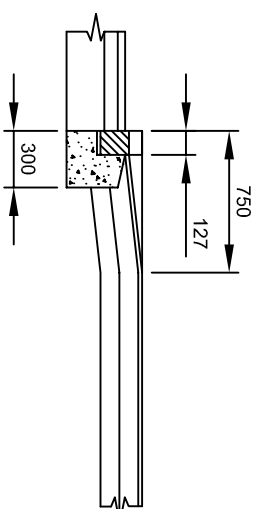
PLAN

Layer	Clause	Material	Type of Binder	THICKNESS OF LAYER [mm]		
				Footways	Footway Crossing for Light Vehicles	Footway Crossing for Commercial Vehicles Where specified
Capping	-	6F2 Capping Material	-	-	-	
Foundation	803	Granular sub - Base material Type 1	100-150 pen bitumen to BS EN 12591:2009	100	100	
			100-150 pen bitumen to BS EN 12591:2009	-	-	
Base	903	Dense Macadam	100-150 pen bitumen to BS EN 12591:2009	-	150	
			Rolled Asphalt	-	-	
Binder course	906	Dense Macadam	100-150 pen bitumen to BS EN 12591:2009	50	75	
			Dense Macadam	25	25	
Surface course	911	Rolled Asphalt (55% stone content)	-	-	40	

SCHEDULE OF FOOTWAY CONSTRUCTION

Notes :-

- For further information see Appendix 11/1.
- 200 pen bitumen may be used in lieu of 100 pen material where agreed with the Project Manager.
- All dimensions in millimetres.



SECTION A-A



STANDARD DETAIL SHEETS

FOOTWAY CROSSINGS
MACADAM AND ASPHALT

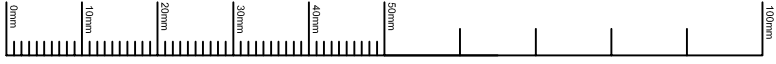


This detail is controlled by Birmingham City Council. Email - Transport.Projects@Birmingham.gov.uk

DATE	REV.	REVISIONS	DRN	PM	REVISION
2013	F	DETAILS & FRAME AMENDED	DH	PP	
2010	E	NOTES AMENDED	CCH	AJC	
2004	D	DETAILS & NOTES AMENDED	-	AJC	
2003	C	NOTES AMENDED	-	BSK	
2002	B	DETAILS AMENDED	-	AJC	
2002	A	DETAILS & NOTES AMENDED	-	AJC	
2000	-	ORIGINAL DRAWING CREATED	SRE	AJC	

DATE	REV.	REVISIONS	DRN	PM	REVISION
2013	F	GENERAL	DH	PP	
2013	TE		DH	PP	
2013	PP		DH	PP	
2013	PP		DH	PP	

DWG. No
HW/11.56



A3

