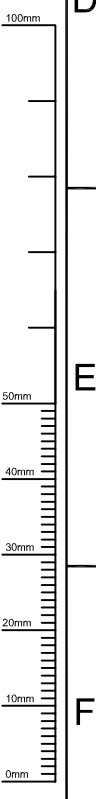
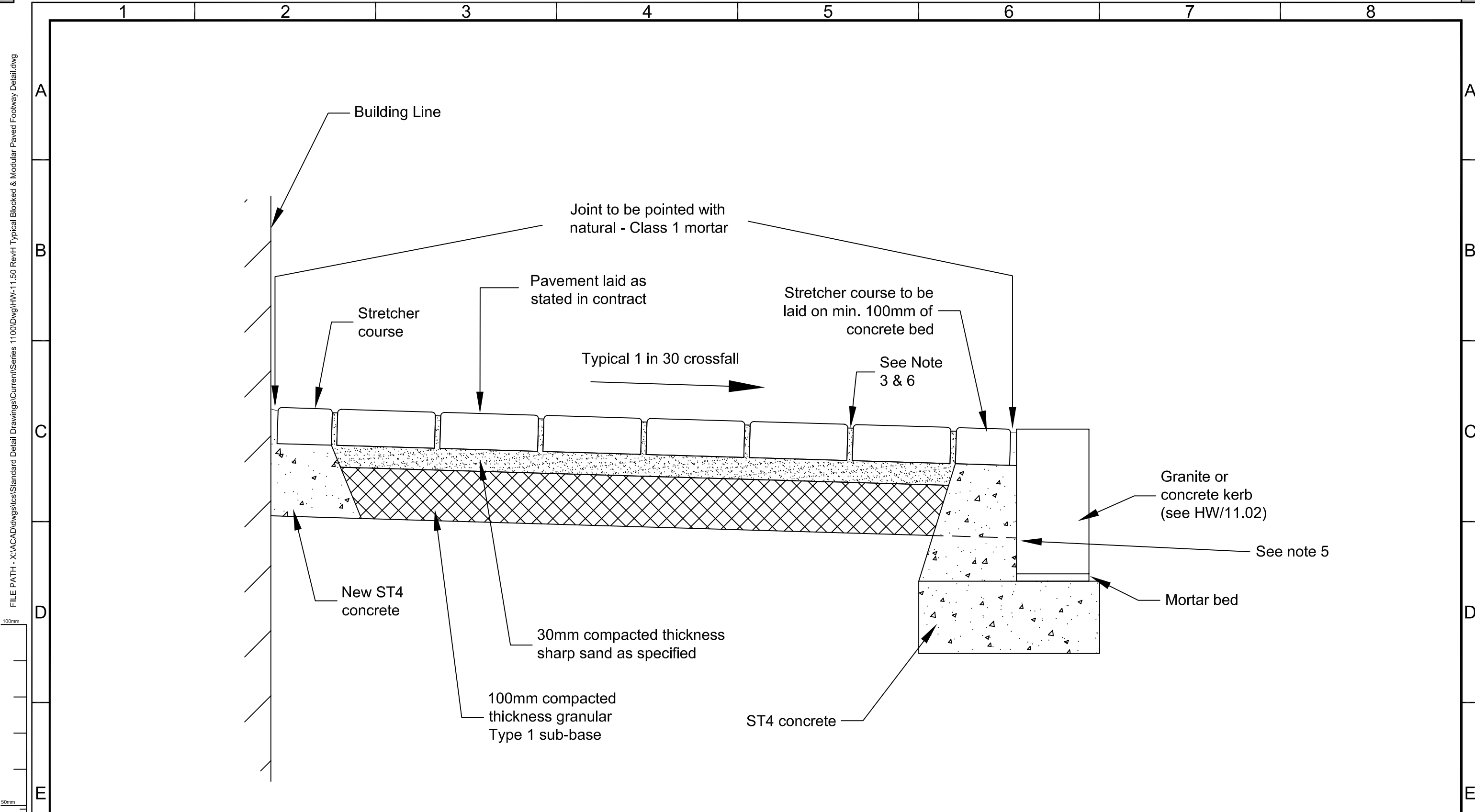
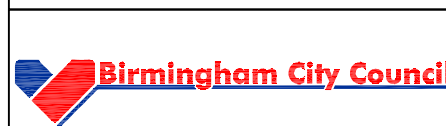


FILE PATH - X:\ACAD\dwg\stce\Standard Detail Drawings\Current\Series 1100\dwg\HW-11.50 Rev H Typical Blocked & Modular Paved Footway Detail.dwg



- Notes :-**
1. Clay pavers to have nibs to form correct spacing.
  2. Laying sand to be in accordance with BS 7533-3 +A1:2009, grading category 3.
  3. Joint infill shall be kiln-dried fine clean sand grading FP to BS EN 12620 +A1, designation 0/1 with 55-100% by mass passing the 0.5mm sieve, the addition of 5% ordinary portland cement, for block paving. Joint with - 3mm for modular paving.
  4. For colour of blocks / bricks refer to contract document.
  5. Existing kerb backing brace to be broken out to allow a minimum of 100mm concrete under stretcher course.
  6. The Project Manager is to confirm whether sealant is required for sand joints.



SCHEME  
STANDARD DETAIL SHEETS



DRAWING  
TYPICAL BLOCKED / MODULAR PAVED  
FOOTWAY DETAIL

2015	H	NOTES AMENDED	DH	PP
2014	G	DETAILS AMENDED	DH	PP
2013	F	DETAILS & FRAME AMENDED	DH	PP
2009	E	NOTES AMENDED	CCH	MM
2005	D	NOTES AMENDED	-	AJC
2004	C	NOTES AMENDED	-	AJC
2003	B	NOTES AMENDED	-	BSK
2002	A	DETAILS & NOTES AMENDED	-	AJC
2000	-	ORIGINAL DRAWING CREATED	MP	AJC
DATE	REV.	REVISIONS	DRN	PM
DRAWN	DESIGNER	PM	REVISION	
DH	TE	PP	H	
DRAWING STATUS			SCALE	
GENERAL			NTS	
DWG. No				
HW/11.50				

This detail is controlled by Birmingham City Council. Email - Transport.Projects@Birmingham.gov.uk

A3