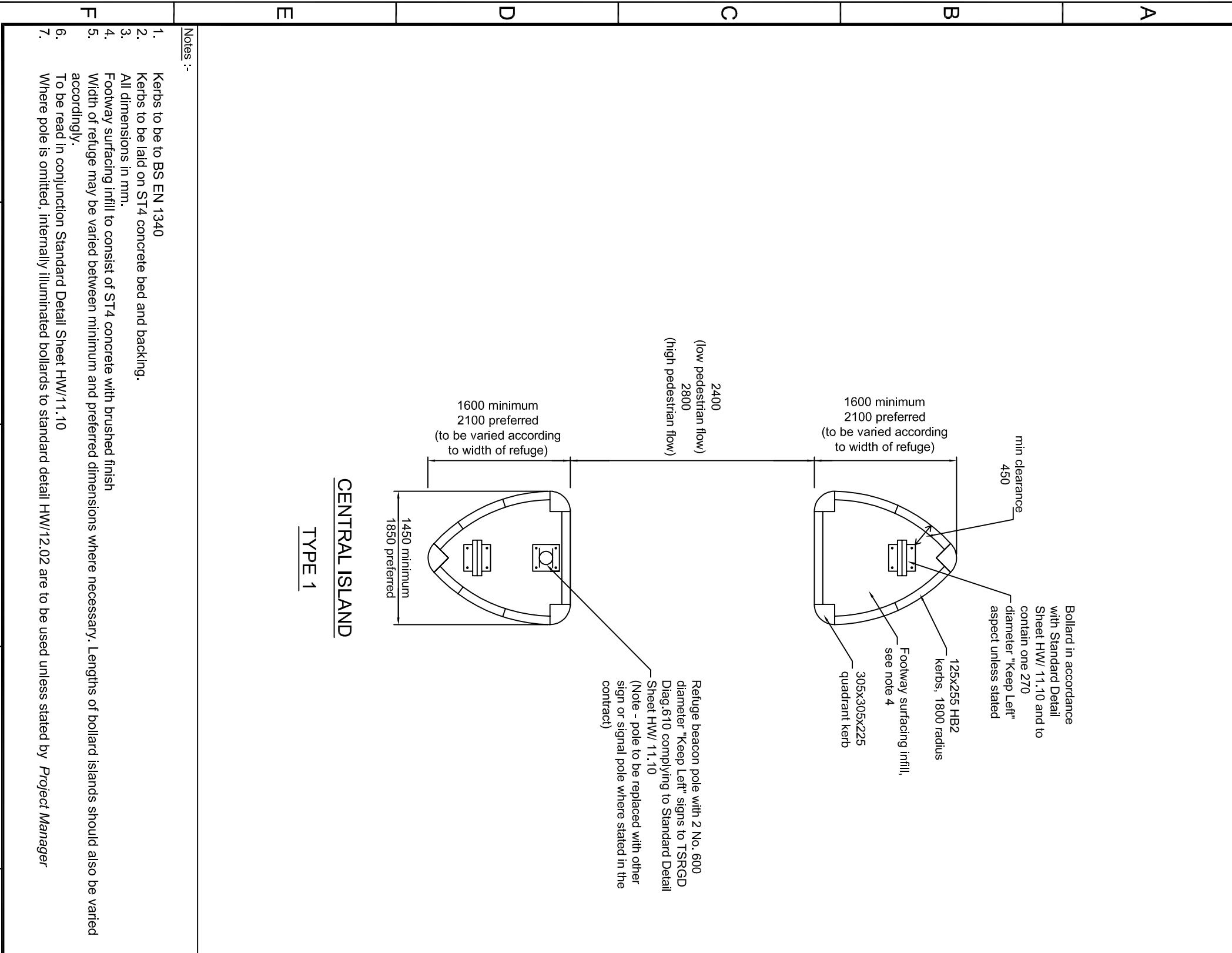
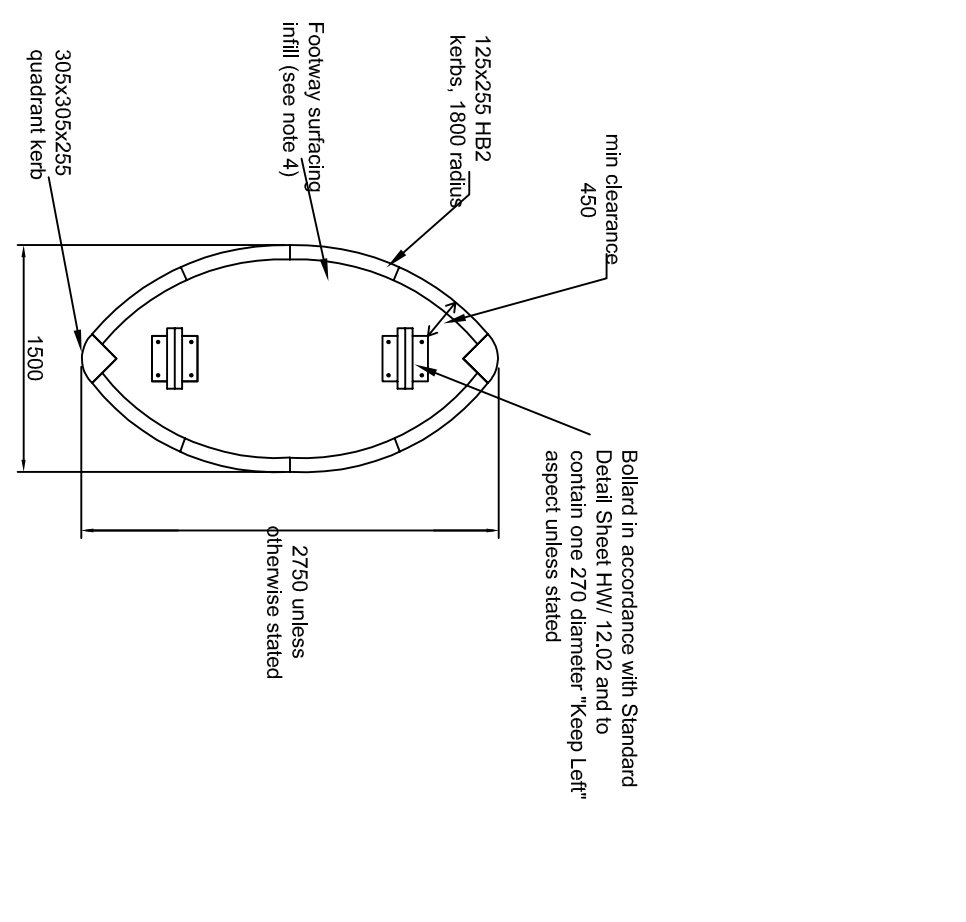


1 2 3 4 5 6 7 8



**CENTRAL ISLAND**  
**TYPE 1**



**CENTRAL ISLAND**  
**TYPE 2**

- Notes :-
1. Kerbs to be to BS EN 1340
  2. Kerbs to be laid on ST4 concrete bed and backing.
  3. All dimensions in mm.
  4. Footway surfacing infill to consist of ST4 concrete with brushed finish
  5. Width of refuge may be varied between minimum and preferred dimensions where necessary. Lengths of bollard islands should also be varied accordingly.
  6. To be read in conjunction Standard Detail Sheet HW/11.10
  7. Where pole is omitted, internally illuminated bollards to standard detail HW/12.02 are to be used unless stated by *Project Manager*

**Birmingham City Council**

BSI UKAS

SCHEME: STANDARD DETAIL SHEETS

DRAWING: CENTRAL ISLAND (TYPES 1 & 2)

This detail is controlled by Birmingham City Council. Email - Transport.Projects@Birmingham.gov.uk

DATE	REV.	DESCRIPTION	BY	CHECKED
2013	J	DETAILS & FRAME AMENDED	DH	PP
2009	I	NOTES AMENDED	CCH	MM
2008	H	NOTES AMENDED	CCH	BSF
2007	G	DETAILS & NOTES AMENDED	-	JM
2007	F	NOTES AMENDED	-	BSF
2007	E	DETAILS & NOTES AMENDED	-	AJC
2004	D	NOTES AMENDED	-	BSK
2003	C	NOTES AMENDED	-	AJC
2002	B	BORDER & TITLE AMENDED	-	AJC
2002	A	DETAILS & NOTES AMENDED	-	AJC
2000	-	ORIGINAL DRAWING CREATED	SRE	AJC

DATE: 03/12/13  
DESIGNER: TE  
DRAWN: PM  
CHECKED: PP  
DATE: 03/12/13  
DRAWING STATUS: J  
SCALE: NTS

DWG. No: HW/11.08