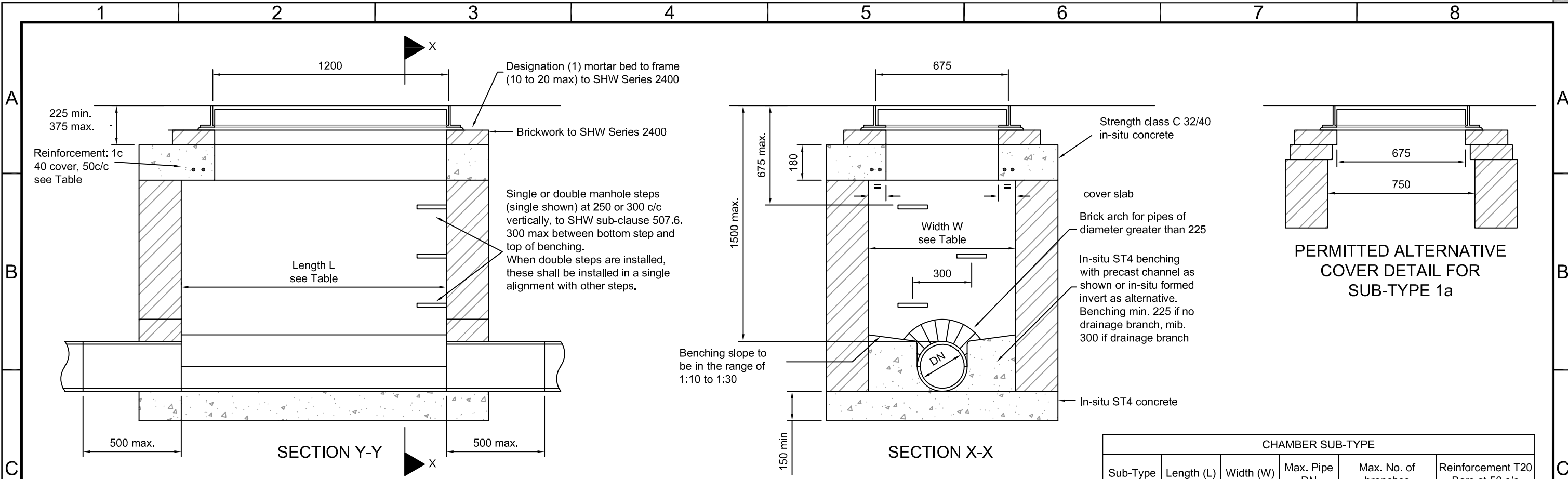
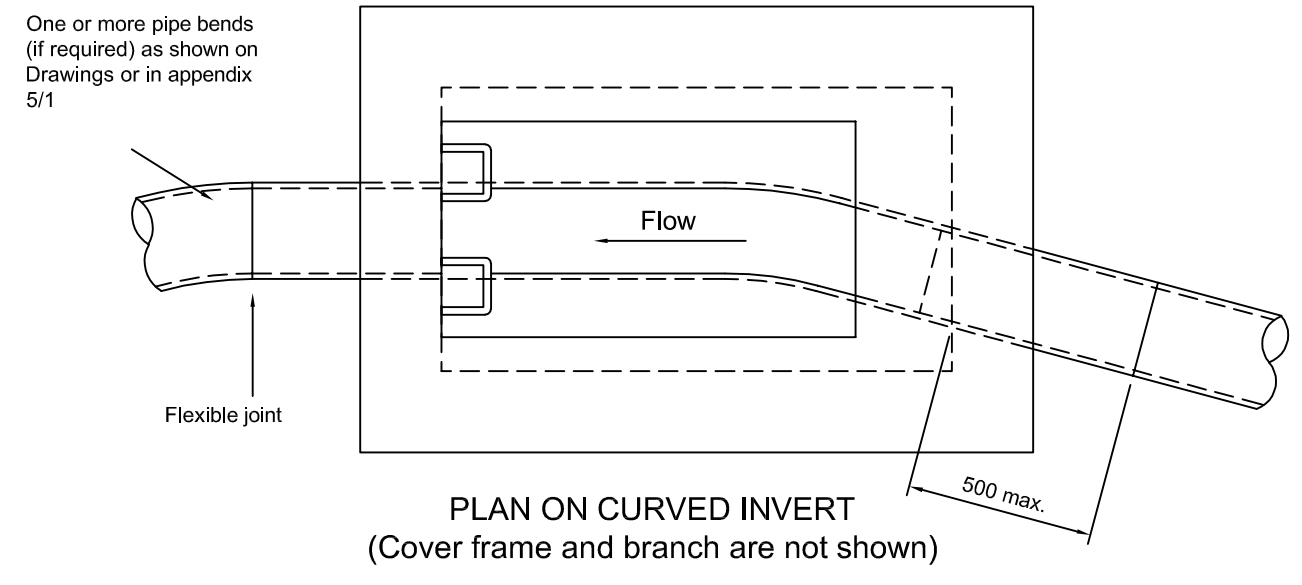
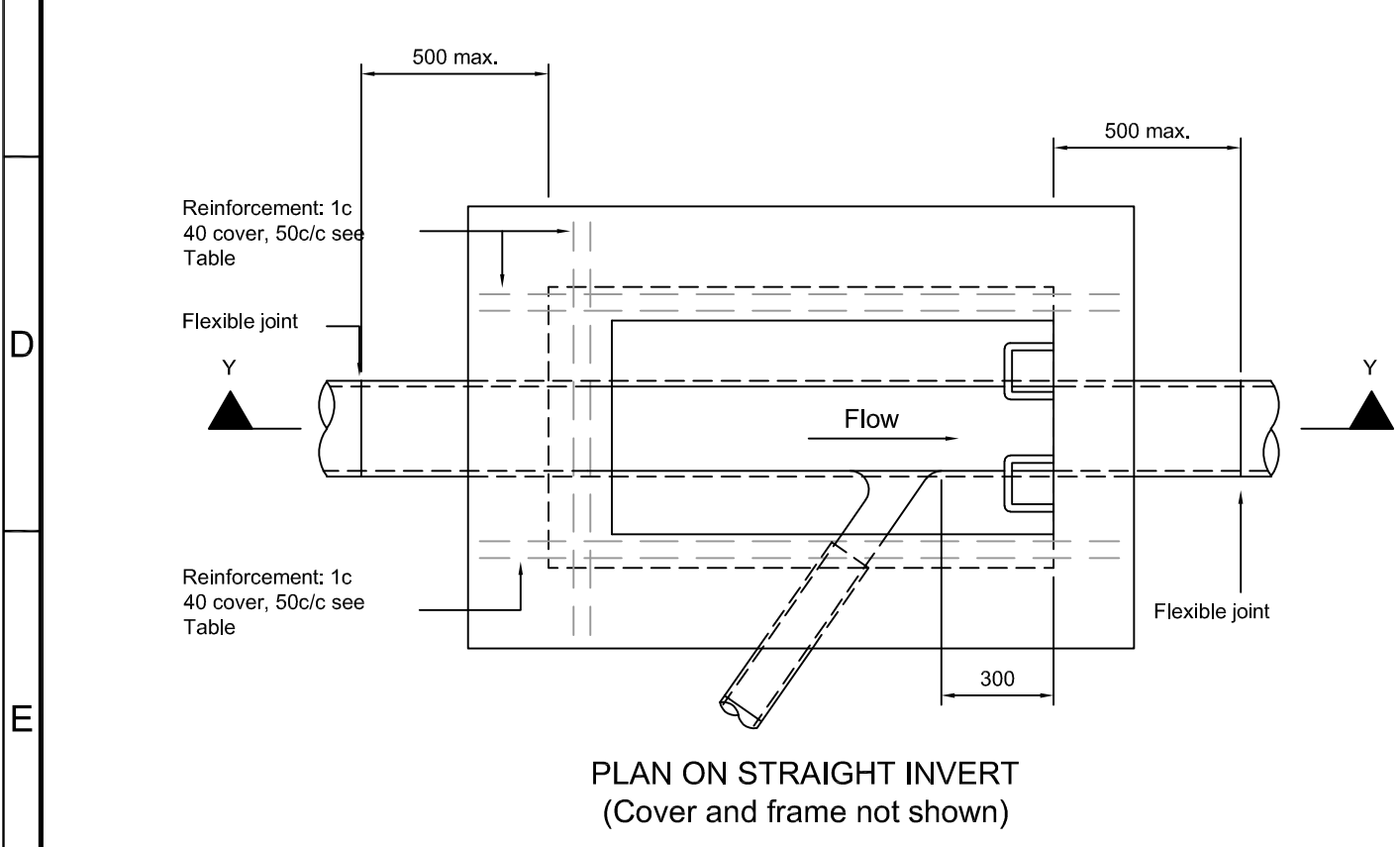


FILE PATH - X:\ACAD\dwg\stce\Standard Detail Drawings\Current\Series 500\DWG\HW-5.05 RevD Type 1 Chamber.dwg



PERMITTED ALTERNATIVE COVER DETAIL FOR SUB-TYPE 1a

CHAMBER SUB-TYPE					
Sub-Type	Length (L)	Width (W)	Max. Pipe DN	Max. No. of branches	Reinforcement T20 Bars at 50 c/c
1a	1200	750	225	1 on either side	2 bars 1550 long
1b	1200	825	300	1 on either side	4 bars 1550 long
1c	1350	975	450	1 on either side	6 bars 1700 long 3 bars 1325 long



- Notes :-**
- For pipes 450mm maximum diameter, maximum depth 1500mm + pipe diameter.
 - All dimensions in millimetres
 - Chamber walls 225 thick to be constructed in Class A clay engineering bricks to SHW Series 2400 in designation (i) mortar or in-situ ST4 concrete to SHW Clause 2602.
 - For details of pipe size(s), invert level(s) and type of cover see drawings and appendix 5/1.
 - See SHW sub-clause 507.7 regarding backfilling/surround to chamber.



SCHEME
 STANDARD DETAIL SHEETS

DRAWING
 TYPE 1 CHAMBER
 (BRICK OR IN-SITU CONCRETE
 MANHOLE)

2018	D	NOTES AMENDED	DAM	TE
2013	C	DETAIL REPLACED	DH	PP
2004	B	CONCRETE CLASS AMENDED	-	AJC
2002	A	BORDER & TITLE AMENDED	-	AJC
2000	-	ORIGINAL DRAWING CREATED	SRE	AJC
DATE	REV.	REVISIONS	DRN	PM
DRAWN	DESIGNER	PM	REVISION	
DH	03/12/13	TE	03/12/13	PP
DRAWING STATUS				SCALE
GENERAL				1:20
DWG. No				
HW/5.05				

This detail is controlled by Birmingham City Council. Email - Transport.Projects@Birmingham.gov.uk

A3