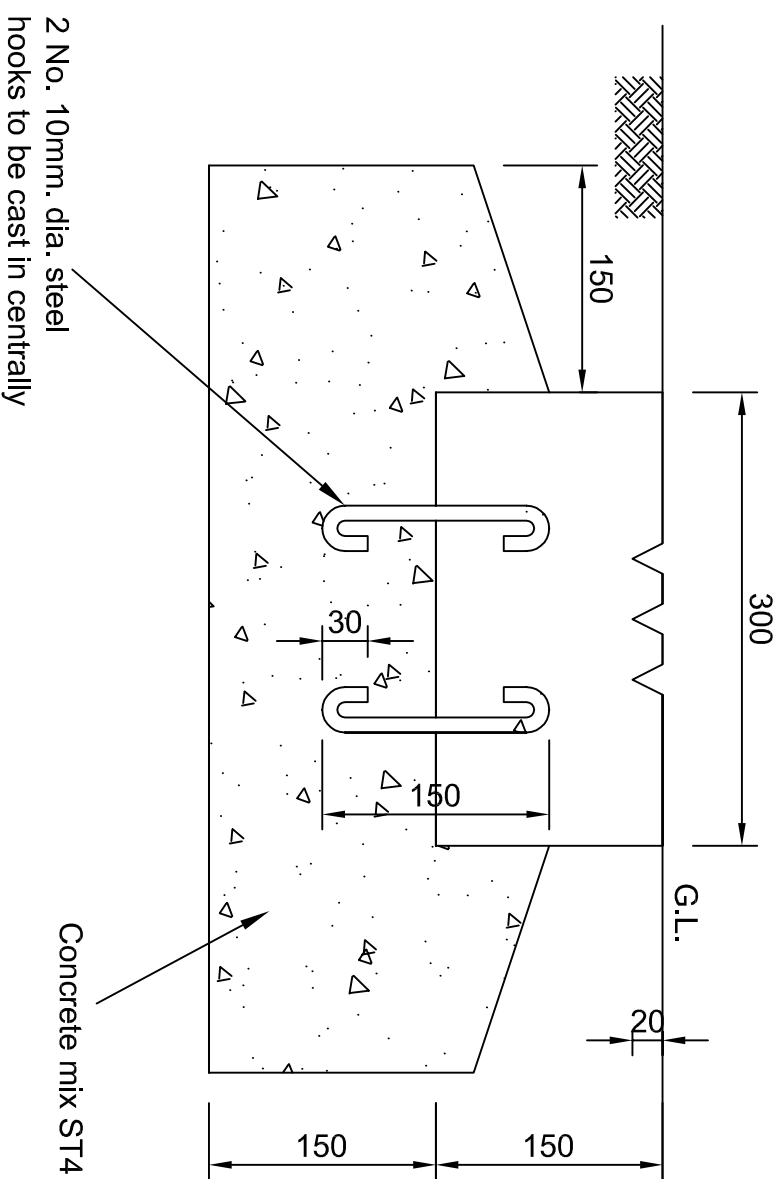


PLAN OF BOUNDARY MARKER - (To be set in concrete as shown on sectional Detail A-A)

Notes :-

1. Lettering to be recessed 15mm.
2. Boundary arrow to be recessed 20mm.
3. Markers to be spaced at 8mm intervals.
4. Markers to be manufactured in Class 40/50 concrete with 4/20mm aggregate to BS EN 206-1.
5. All dimensions in millimetres.



SECTION A-A



STANDARD DETAIL SHEETS

BOUNDARY MARKER



This detail is controlled by Birmingham City Council. Email - Transport.Projects@Birmingham.gov.uk

SCHEME		DATE		DESIGNER		REVISIONS		DRAWN		CHECKED	
2013	D	2013	D	DH	03/12/13	TE	03/12/13	PP	03/12/13	DRN	PM
2009	C	2009	C	DH	03/12/13	TE	03/12/13	PP	03/12/13	DRN	PM
2004	B	2004	B	DH	03/12/13	TE	03/12/13	PP	03/12/13	DRN	PM
2002	A	2002	A	DH	03/12/13	TE	03/12/13	PP	03/12/13	DRN	PM
2000	-	2000	-	DH	03/12/13	TE	03/12/13	PP	03/12/13	DRN	PM

DWG. No HW/3.06

DATE	REV.	DESCRIPTION	BY	CHKD.
2013	D	DETAILS & FRAME AMENDED	DH	PP
2009	C	NOTES AMENDED	PAS	SBM
2004	B	NOTES AMENDED	-	AJC
2002	A	BORDER & TITLE AMENDED	-	AJC
2000	-	ORIGINAL DRAWING CREATED	SRE	AJC

SCALE 1:5