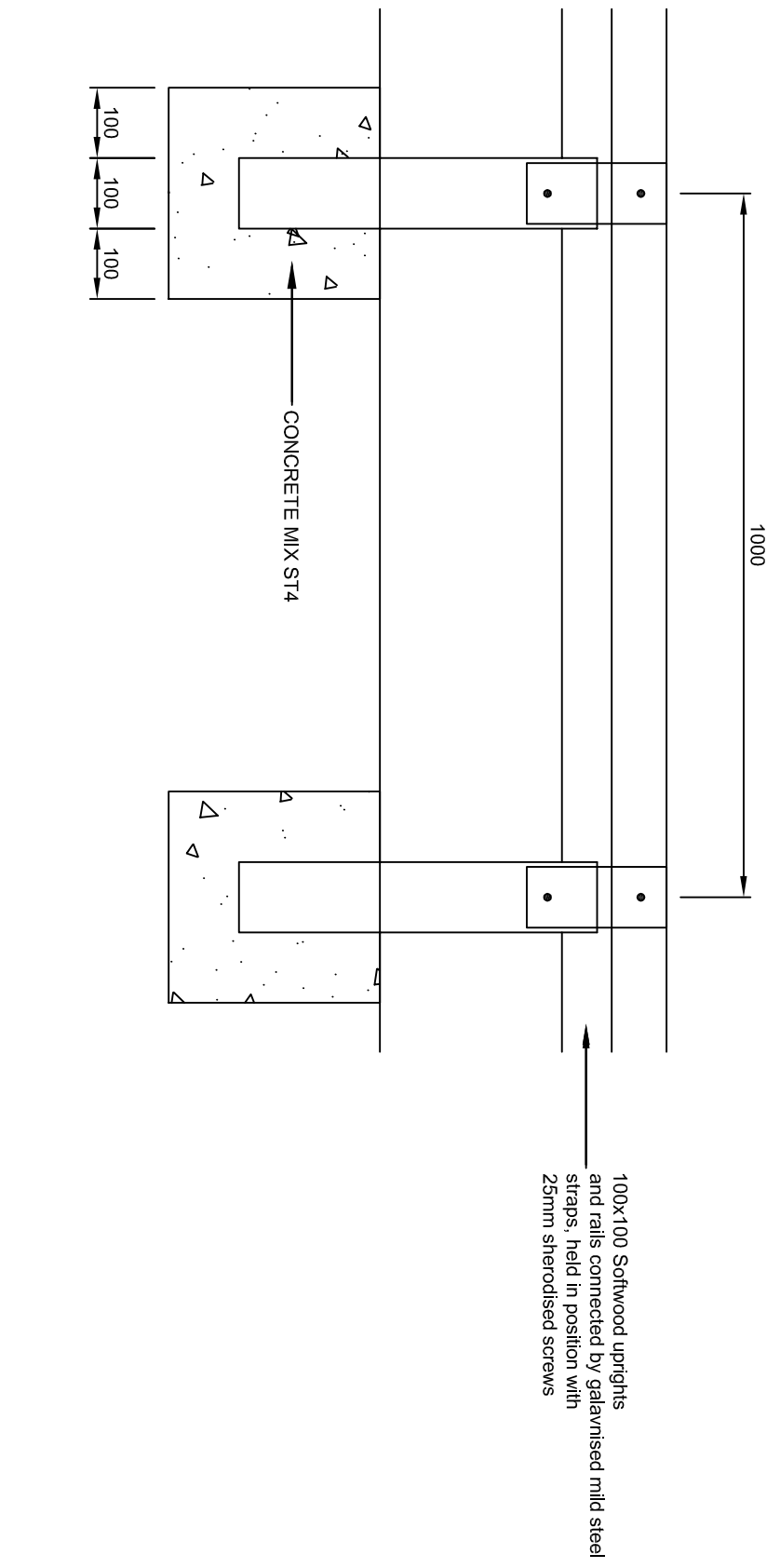
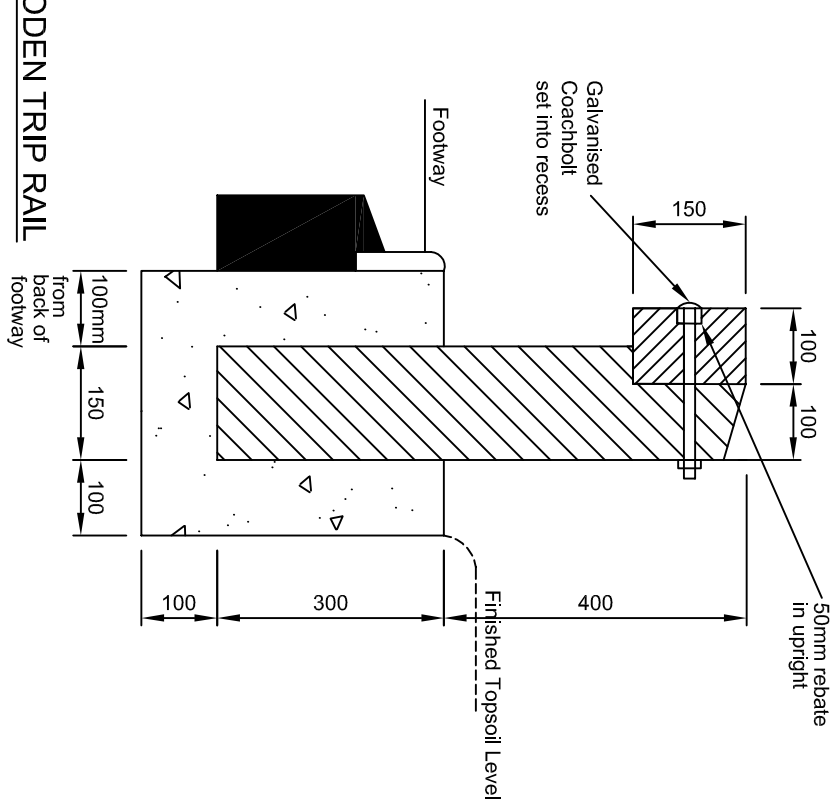


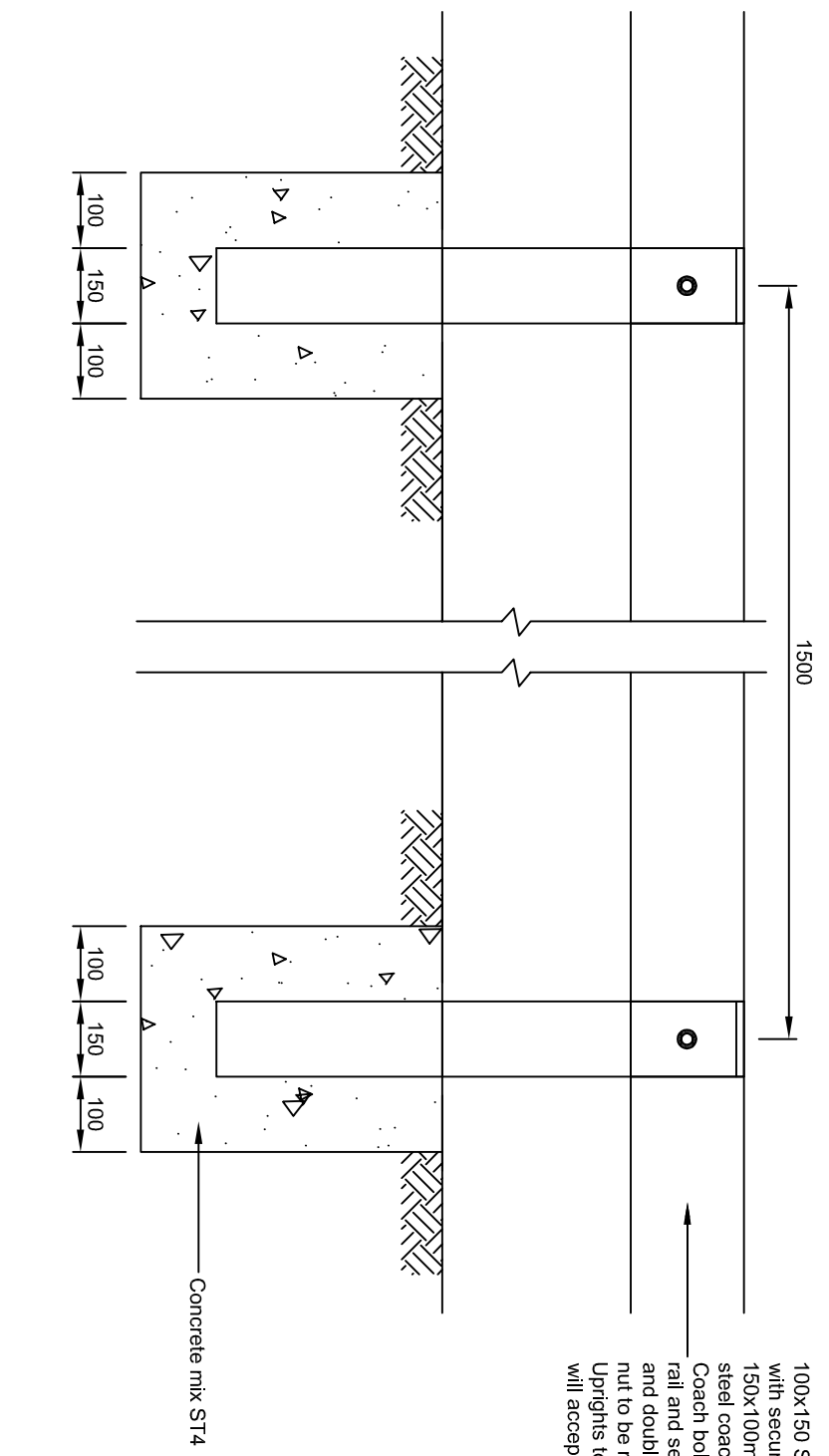
TYPE 1 WOODEN TRIP RAIL



100x150 Softwood uprights and rails connected with secure 100x150 wide timber rail to 150x100mm post with 15mm diam. galvanised steel coach bolt.
Coach bolt head to be recessed in front face of rail and secured with galvanised steel washer and double locking nut. Exposed bolt beyond nut to be removed
Uprights to have 50mm rebate which will accept the rail.



TYPE 2 WOODEN TRIP RAIL



Notes :-

1. All timber is to be supplied and treated to the requirements of Clauses 304 and 311.
2. All timber is to be finished with two coats of black colour wood stain/preservative. Colour to be as specified.
3. Mild steel parts shall be galvanised.
4. For Type 2 trip rail depending on installation location the Contractor is to allow:
Grassed areas: Turf to be laid on a minimum 70mm multi-purpose top soil (BS3882). Surface of soil to be 5mm below exposed surface of concrete foundation.
Turf to about face of concrete.
5. Flexible pavements: Concrete foundation to be installed 25mm below finished surface level. 25mm surface course to be laid on a tack coat to finished level.
Confirmation of what is required at each location is to be agreed in writing with the Project Manager prior to installation.



SCHEME
STANDARD DETAIL SHEETS



DRAWING
SOFTWOOD TRIP RAIL
TYPES 1 & 2

This detail is controlled by Birmingham City Council. Email - Transport.Projects@Birmingham.gov.uk

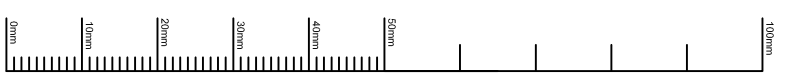
DATE	REV.	DESIGNER	PM	PP	REVISION
2013	C				DETAILS & FRAME AMENDED
2004	B				NOTES AMENDED
2002	A				BORDER & TITLE AMENDED
2000	-				ORIGINAL DRAWING CREATED

DATE	REV.	DESIGNER	PM	PP	REVISION
DH	03/12/13	TE	03/12/13	PP	03/12/13

DRAWING STATUS
GENERAL

DWG. No
HW/3/02

SCALE
1:10



1 2 3 4 5 6 7 8