

**Reimagining
transport in the
West Midlands**

**West Midlands Local
Transport Plan**

David Harris
Transport Strategy & Place Manager

**Birmingham Transport Summit
26th April 2023**

We provide, fund, enable & facilitate

The transport brand of the WMCA

Produce a statutory Local Transport Plan

Coordinate public transport services & assets

Concurrent powers on Key Route Network

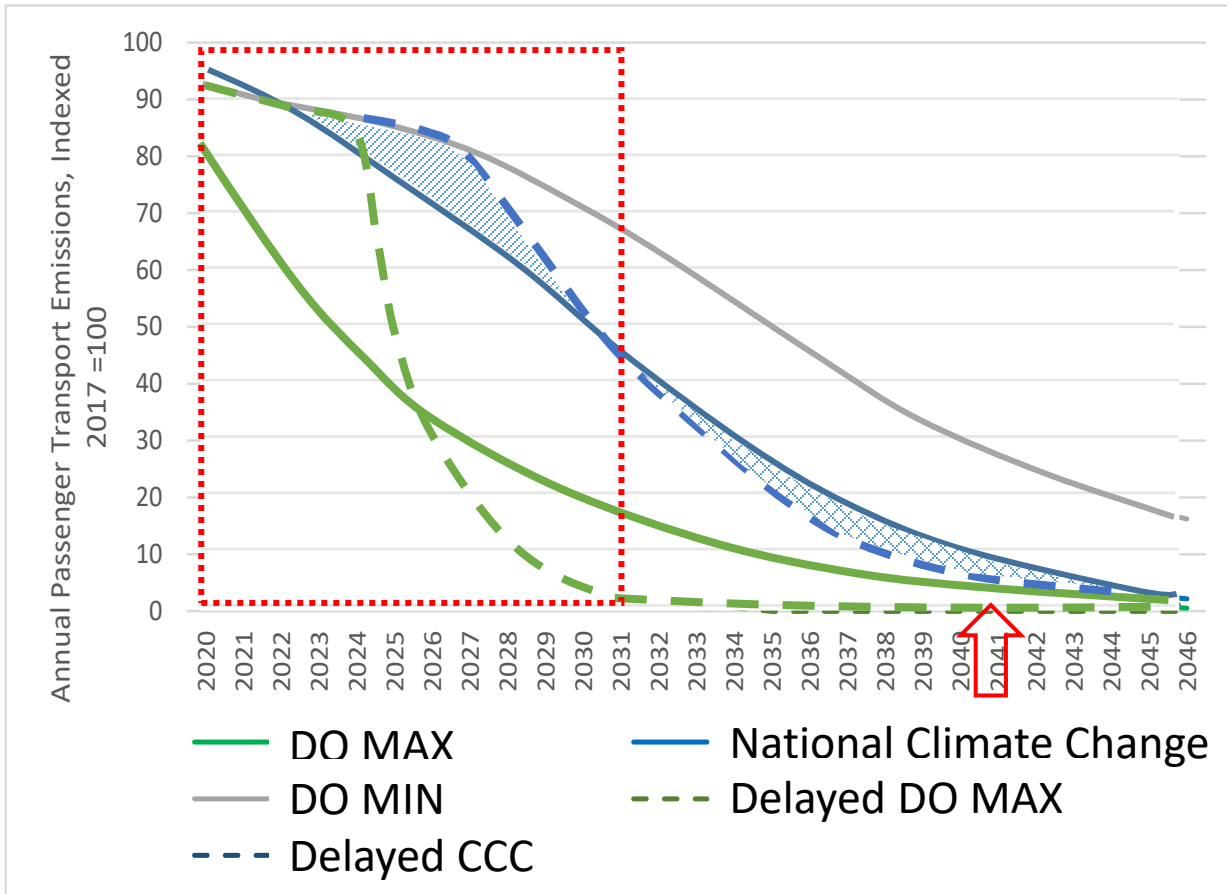




Drivers for change

“By 2030, local public transport connectivity across the country will be significantly closer to the standards of London, with improved services, simpler fares and integrated ticketing.”

Scale and Pace of Change



By 2031 under...

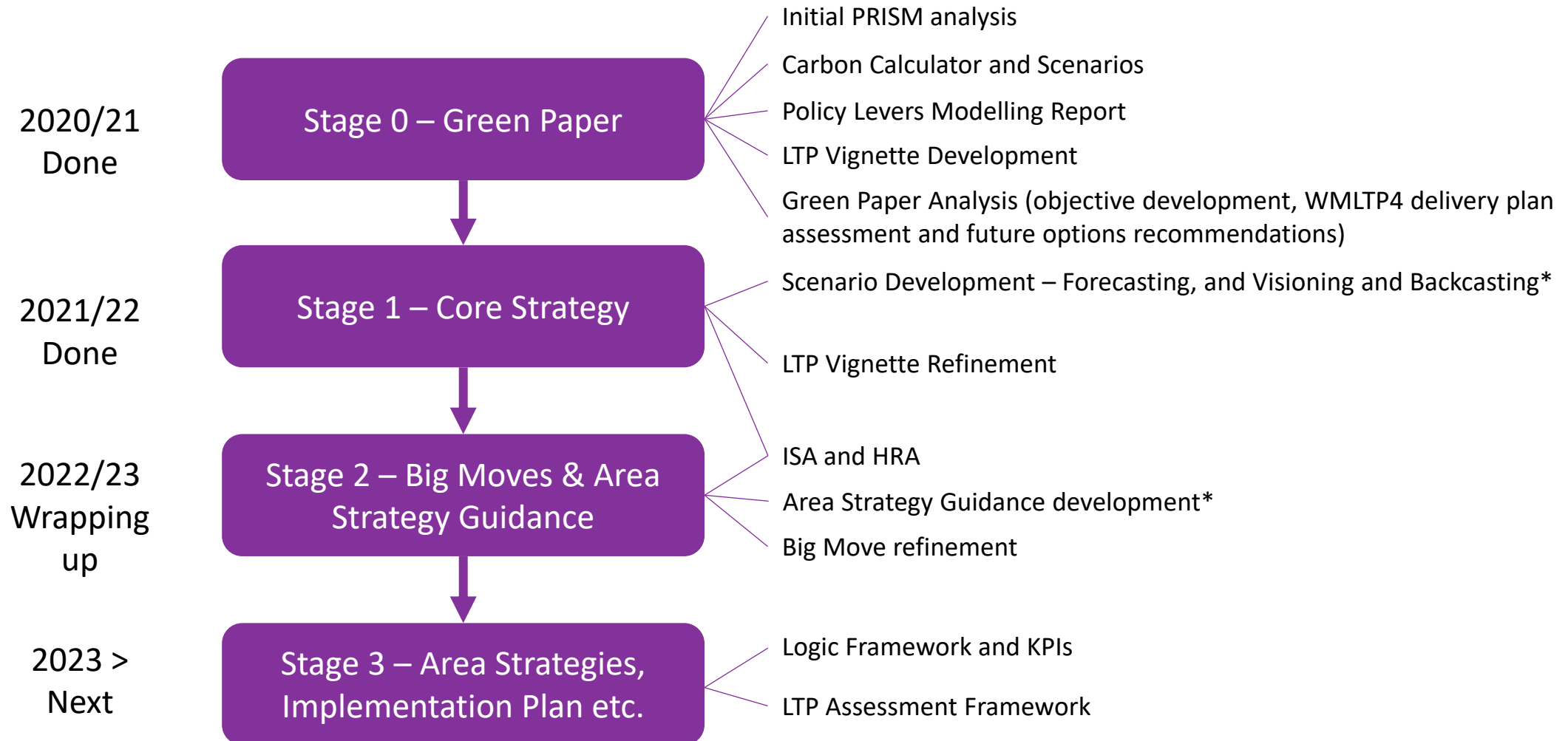
WM2041

- **36%** reduction car travel distance
- **50%** reduction in shopping trip distance
- **100%** increase in PT
- **700%** cycling increase
- **5-6 yr** Acceleration in EV uptake

National 2050

- **9%** reduction car travel distance
- **30%** reduction in shopping trip distance
- **30%** increase in PT
- **175%** cycling increase
- **1 yr** Acceleration in EV uptake

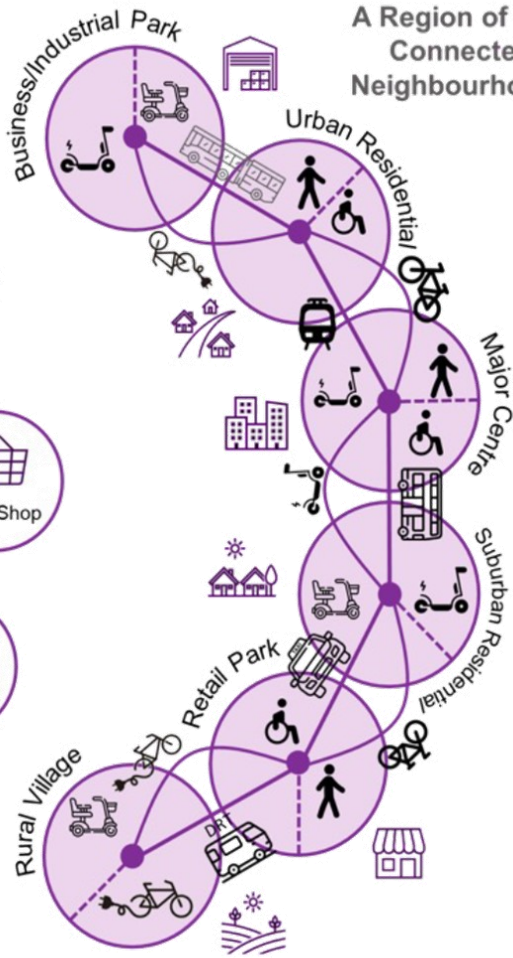
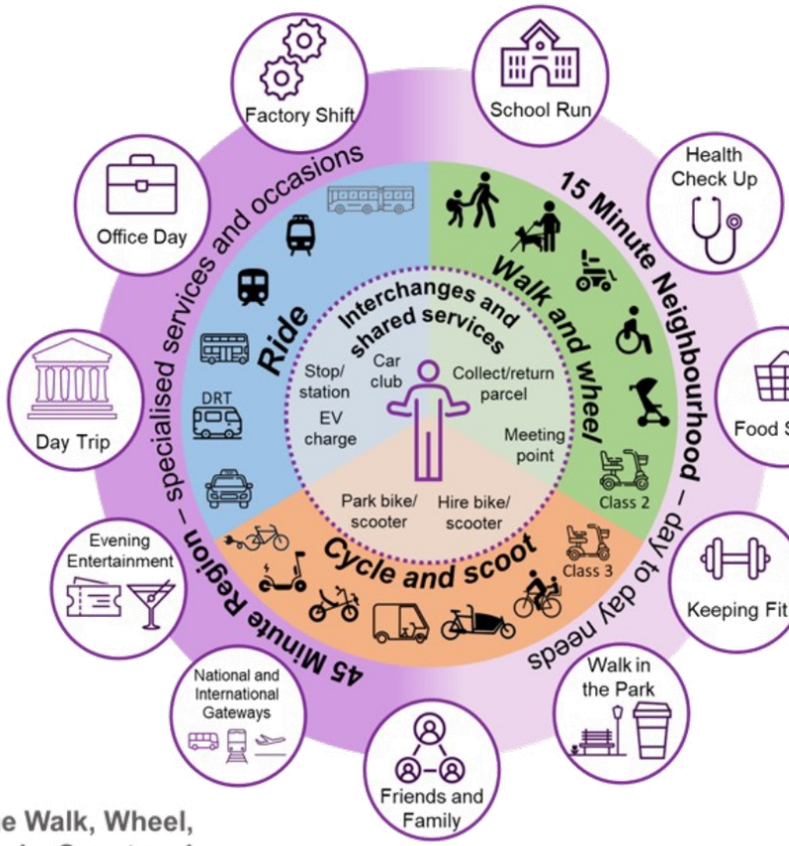
West Midlands Local Transport Plan



Why change?



Vision



Walk and wheel

Walking and wheeling includes pedestrians, but it also includes people who use mobility aids such as powered/unpowered wheelchairs.

The use of prams and trolleys by those travelling also needs to be considered as well as other aids such as guide dogs, sticks and canes.

Cycle and scoot

Cycling and scooting includes a range of pedal powered, electrically powered, and pedal assisted personal vehicles.

It includes vehicles that can currently legally be used on public highways and cycleways (such as pedal bikes), as well as new devices that Government is trialling and proposing to legislate for (such as e-scooters.)

Shared services

In our LTP, shared services are services that provide the public access to personal vehicles that they can drive themselves.

They include services like car clubs and cycle/scooter hire.

Ride modes

Fixed public transport

Fixed public transport includes public transport services that run to a fixed timetable, routes and stops.

They include services like buses, trains and trams.

On-demand services

On-demand services include a range of services available to the public which can be requested on on-demand and are not constrained by timetables, specific routes and stops.

They include services like taxis, community transport, and Ring and Ride, and liftsharing.

Interchanges

Interchanges are places where people can access public transport, on-demand, shared transport services, and/or other ancillary transport services.

They include places like bus stops/stations, rail stations, or neighbourhood mobility hubs.

15 Minute Neighbourhoods

a good range of services in our neighbourhoods can be accessed by "walking or wheeling" in a round trip of no more than 15 minutes

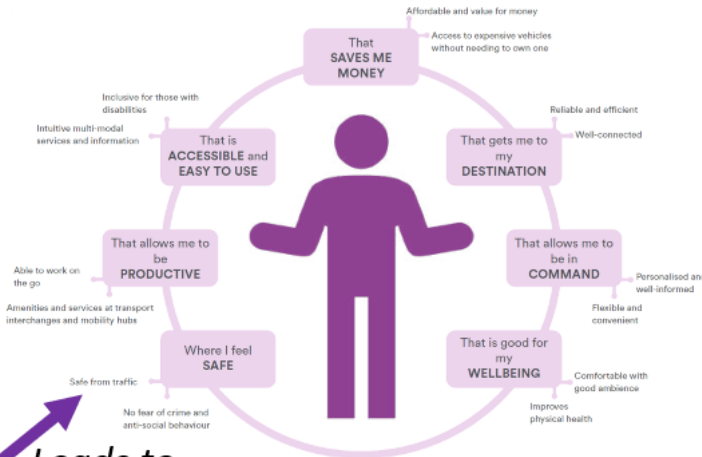
45 Minute Region

a good range of places across our region to undertake work, leisure and socialising can be accessed by "ride" modes within a 45 minute trip.

The Walk, Wheel, Cycle, Scoot and Ride Approach

6 Big Moves

Perceptions and experiences



Transport system change

- 1 Improve accessibility
- 2 Reduce traffic
- 3 Electrify transport

Our actions

6 Big Moves



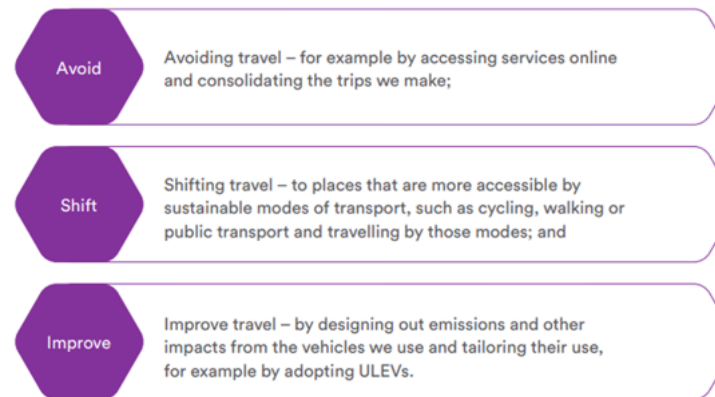
Leads to

Leads to

Leads to

Leads to

Behaviour change



Inclusive growth impacts



6 Big Moves

Big Move 1: Behaviour Change

- Leadership
- Vision-led
- User centric
- Inclusive
- Managing demand
- Engaging with the public

Big Move 4: Public Transport and Shared Mobility

- Tiered public transport
- Shared services
- Interchanges
- Managing overall system

Big Move 2: Accessible & Inclusive Places

- Accessibility
- Land use
- Digital Connectivity

Big Move 5: A Safe, Efficient and Reliable transport network

- Planning, developing and investing
- Managing performance
- Maintaining existing network

Big Move 3: Walk, wheel, cycle and scoot

- Infrastructure and networks
- Access the vehicles
- Awareness, skills and knowledge

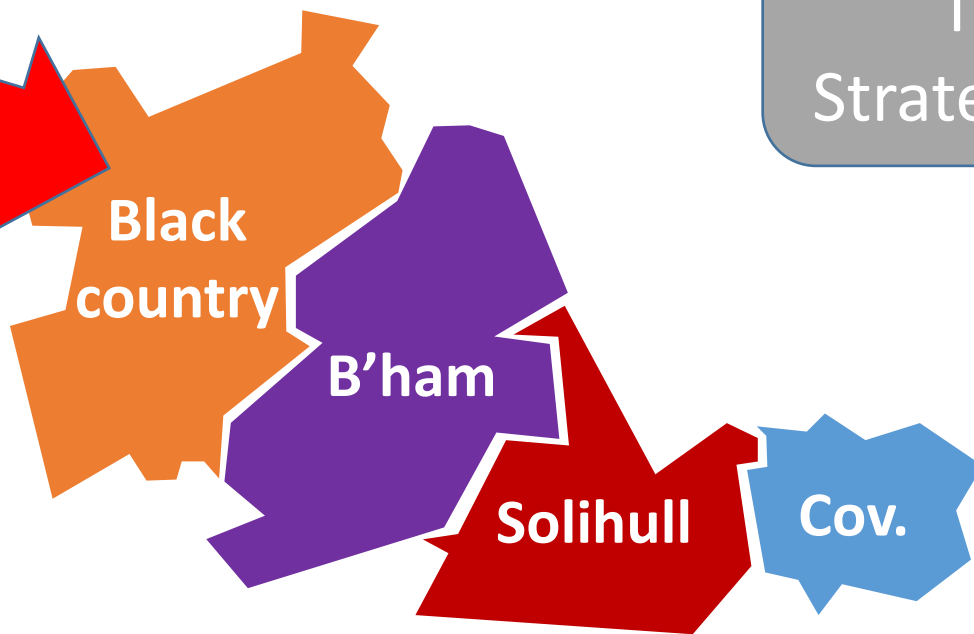
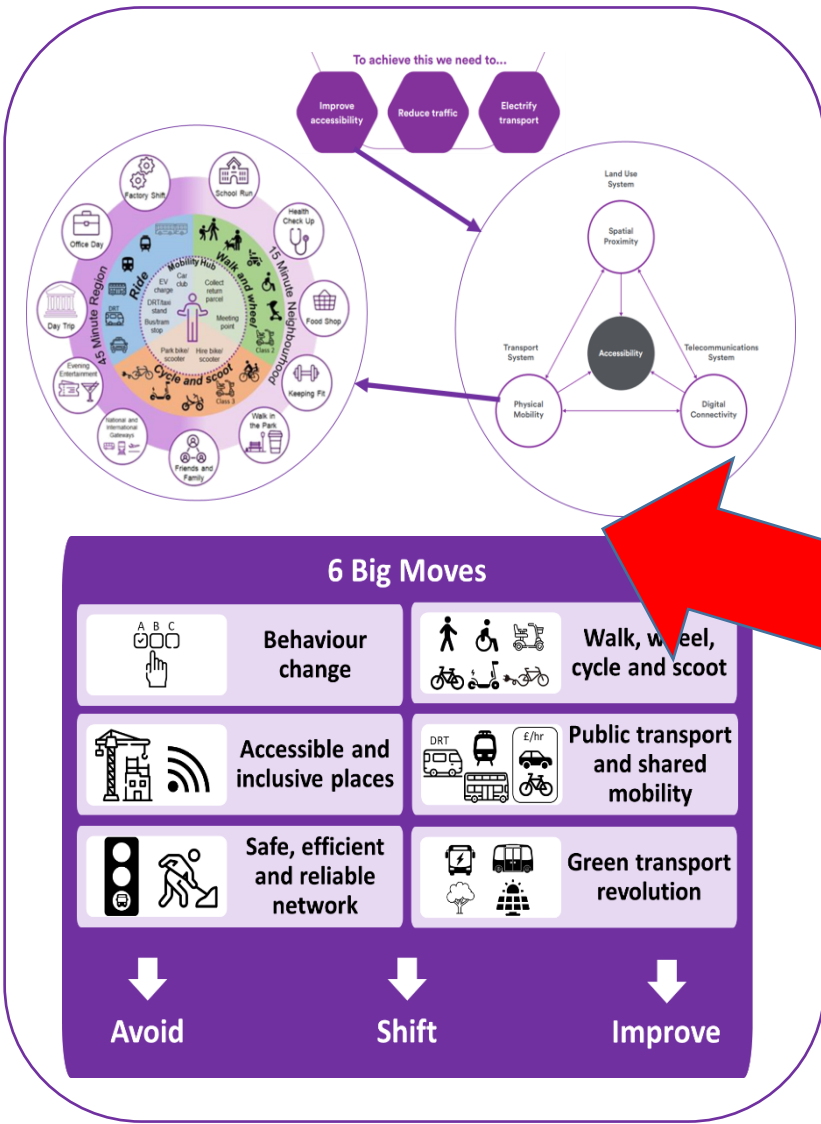
Big Move 6: A green transport revolution

- Recharging and refuelling
- Enhancing built and natural environment
- Embedding responsible innovation

4 Area Strategies

LTP Area Strategies will help us to understand what works where and for who.

Local Authority Transport Strategies & Plans



Next Steps

[TfWM is currently consulting](#) on the draft LTP Big Moves

Consultation open until Friday 5th May

www.tfwm.org.uk/bigmoves

Developing Area Strategies with local authorities during 2023

Final LTP with first implementation plan in **late 2023**

Thank you

