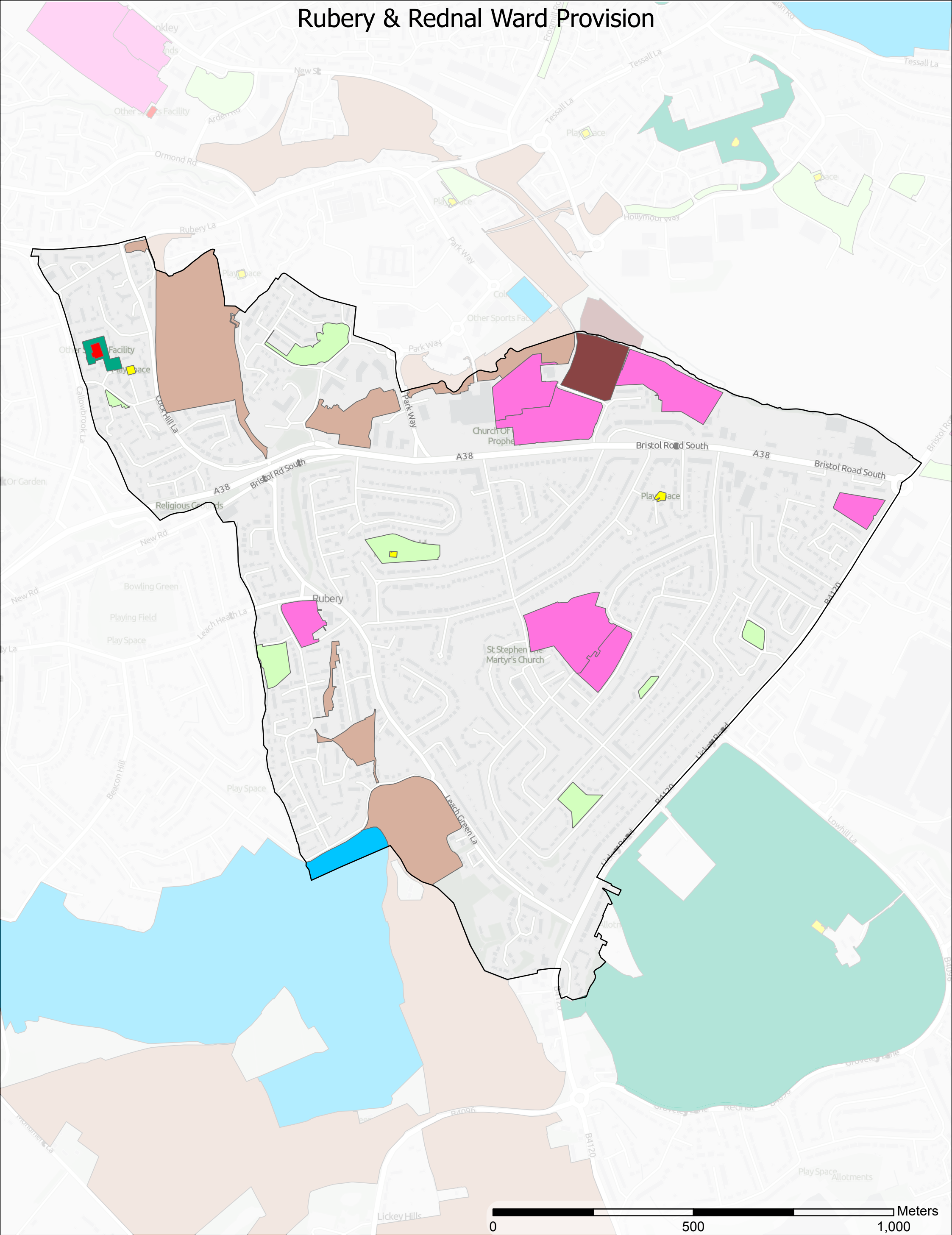
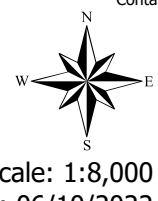


# Rubery & Rednal Ward Provision



## Legend

- Accessible Natural Green Space
- Allotments
- Education
- Informal Green Space
- Outdoor Sport (Private)
- Parks and Recreation Grounds
- Play Space (Child)
- Play Space (Youth)



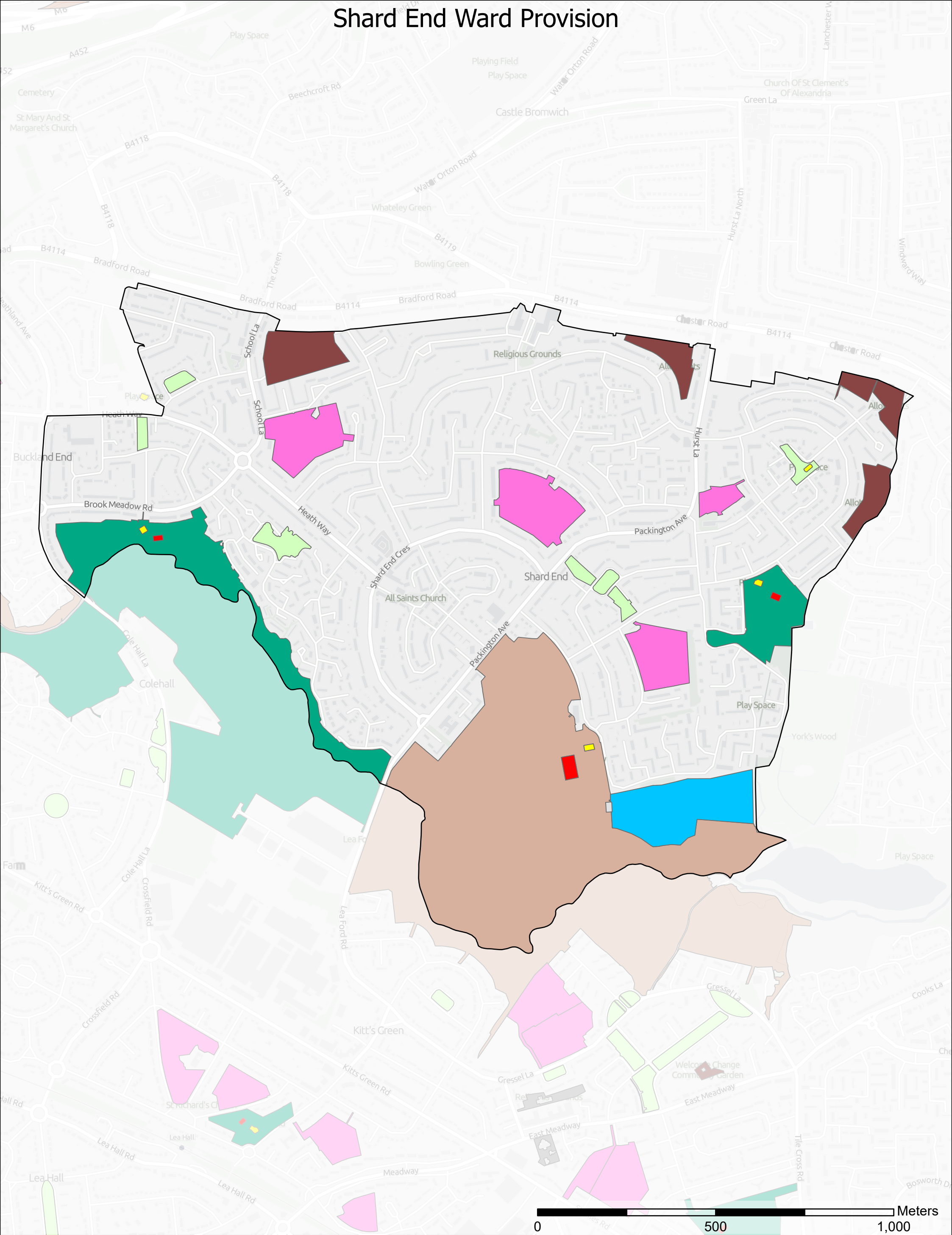
Contains OS data © Crown Copyright and database right 2022  
Contains data from OS Zoomstack



Scale: 1:8,000  
Date: 06/10/2022

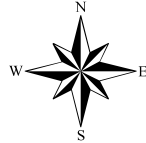


# Shard End Ward Provision



## Legend

- |                                |                              |
|--------------------------------|------------------------------|
| Accessible Natural Green Space | Outdoor Sport (Private)      |
| Allotments                     | Parks and Recreation Grounds |
| Churchyards and Cemeteries     | Play Space (Child)           |
| Education                      | Play Space (Youth)           |
| Informal Green Space           |                              |



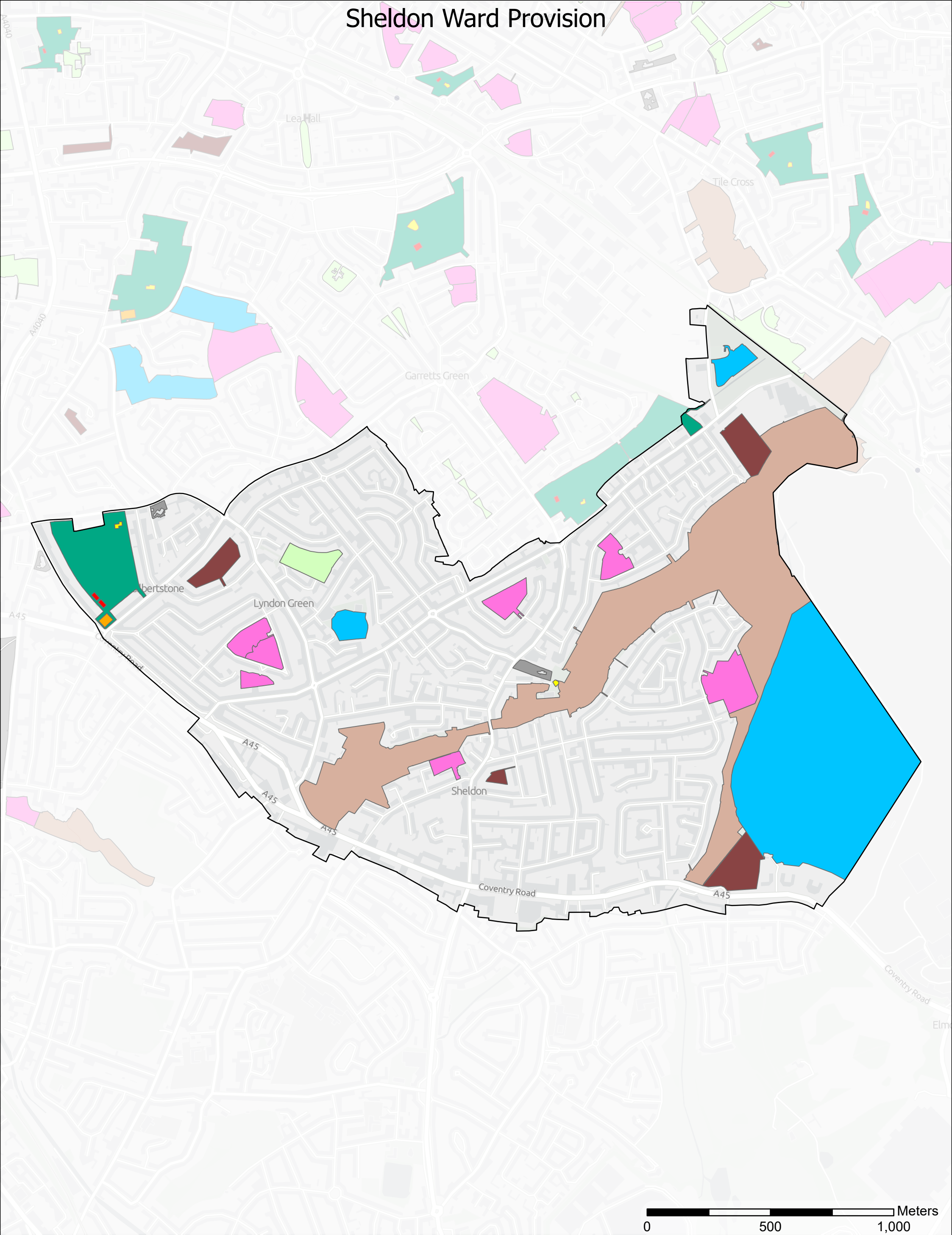
Scale: 1:9,000  
Date: 06/10/2022

Contains OS data © Crown Copyright and database right 2022  
Contains data from OS Zoomstack

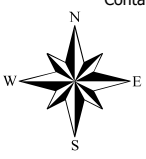
**ethos**  
Environmental Planning



# Sheldon Ward Provision



Contains OS data © Crown Copyright and database right 2022  
Contains data from OS Zoomstack



Scale: 1:13,000  
Date: 06/10/2022

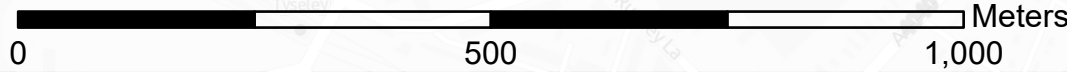
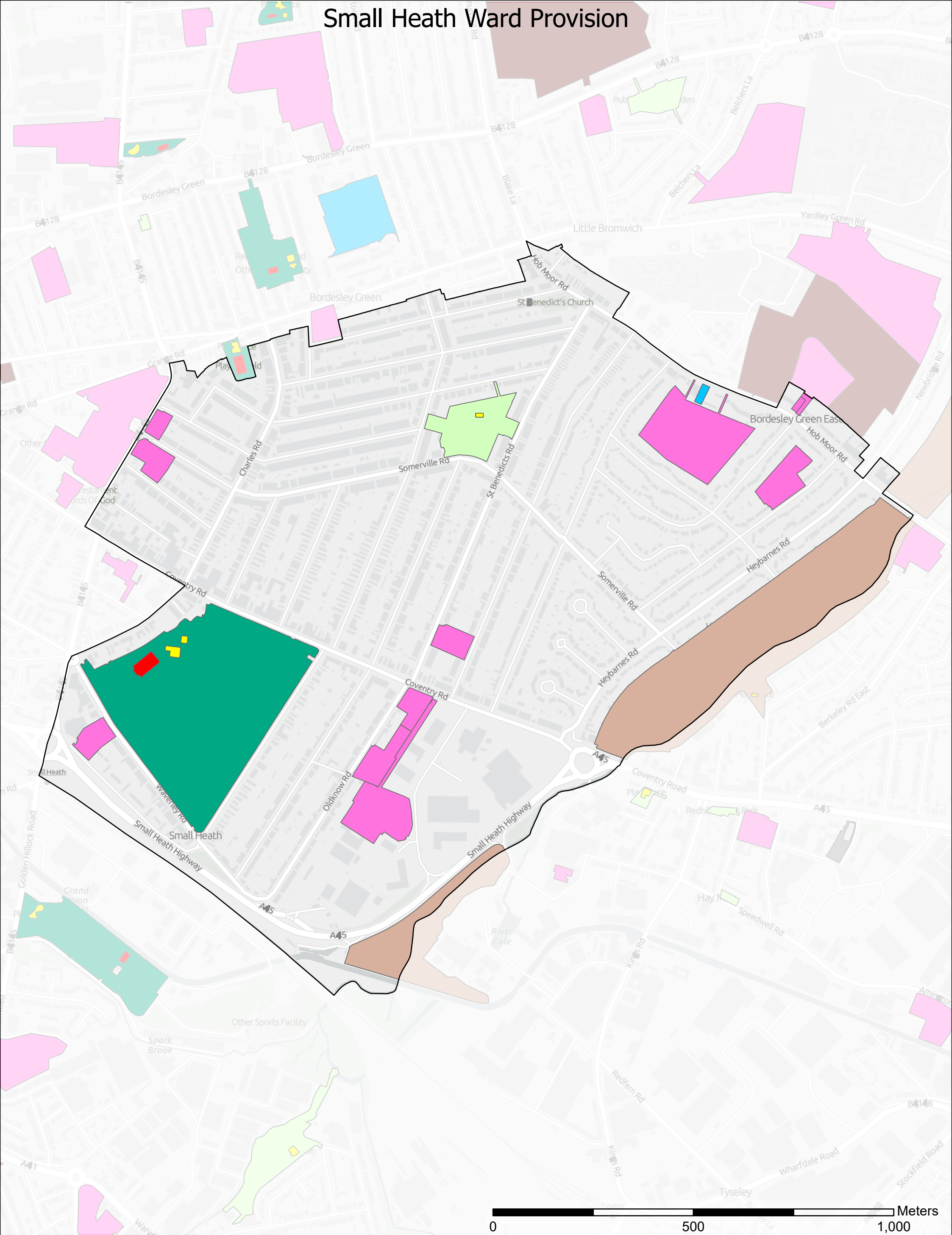
**ethos**  
Environmental Planning

## Legend

- |                                |                              |
|--------------------------------|------------------------------|
| Accessible Natural Green Space | Outdoor Sport (Fixed)        |
| Allotments                     | Outdoor Sport (Private)      |
| Churchyards and Cemeteries     | Parks and Recreation Grounds |
| Education                      | Play Space (Child)           |
| Informal Green Space           | Play Space (Youth)           |

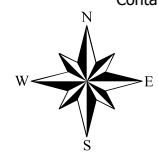


# Small Heath Ward Provision



## Legend

- |                                |                              |
|--------------------------------|------------------------------|
| Accessible Natural Green Space | Outdoor Sport (Private)      |
| Allotments                     | Parks and Recreation Grounds |
| Churchyards and Cemeteries     | Play Space (Child)           |
| Education                      | Play Space (Youth)           |
| Informal Green Space           |                              |

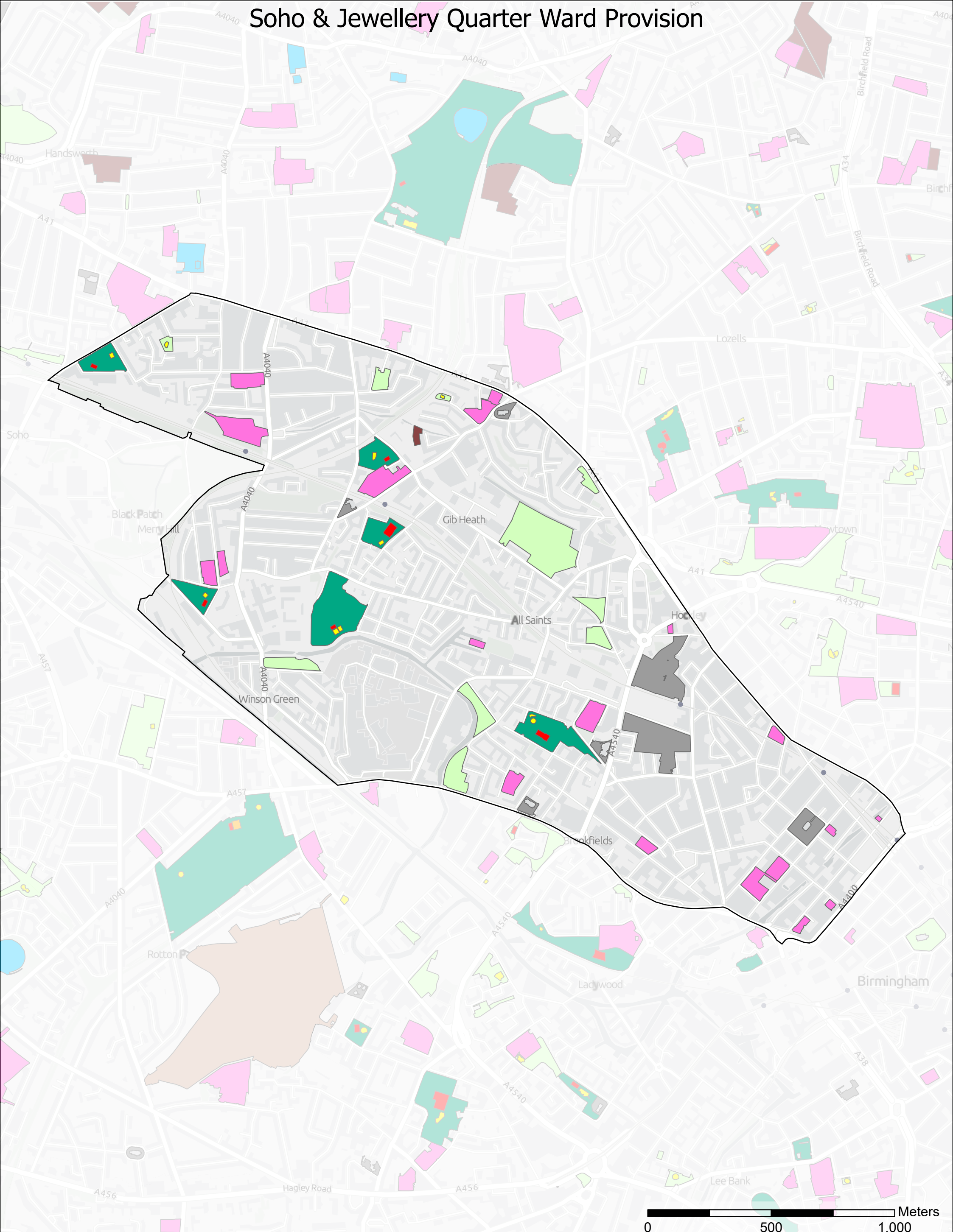


Contains OS data © Crown Copyright and database right 2022  
Contains data from OS Zoomstack



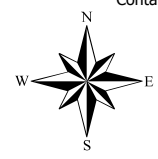


# Soho & Jewellery Quarter Ward Provision



## Legend

- |                                |                              |
|--------------------------------|------------------------------|
| Accessible Natural Green Space | Outdoor Sport (Fixed)        |
| Allotments                     | Outdoor Sport (Private)      |
| Churchyards and Cemeteries     | Parks and Recreation Grounds |
| Education                      | Play Space (Child)           |
| Informal Green Space           | Play Space (Youth)           |



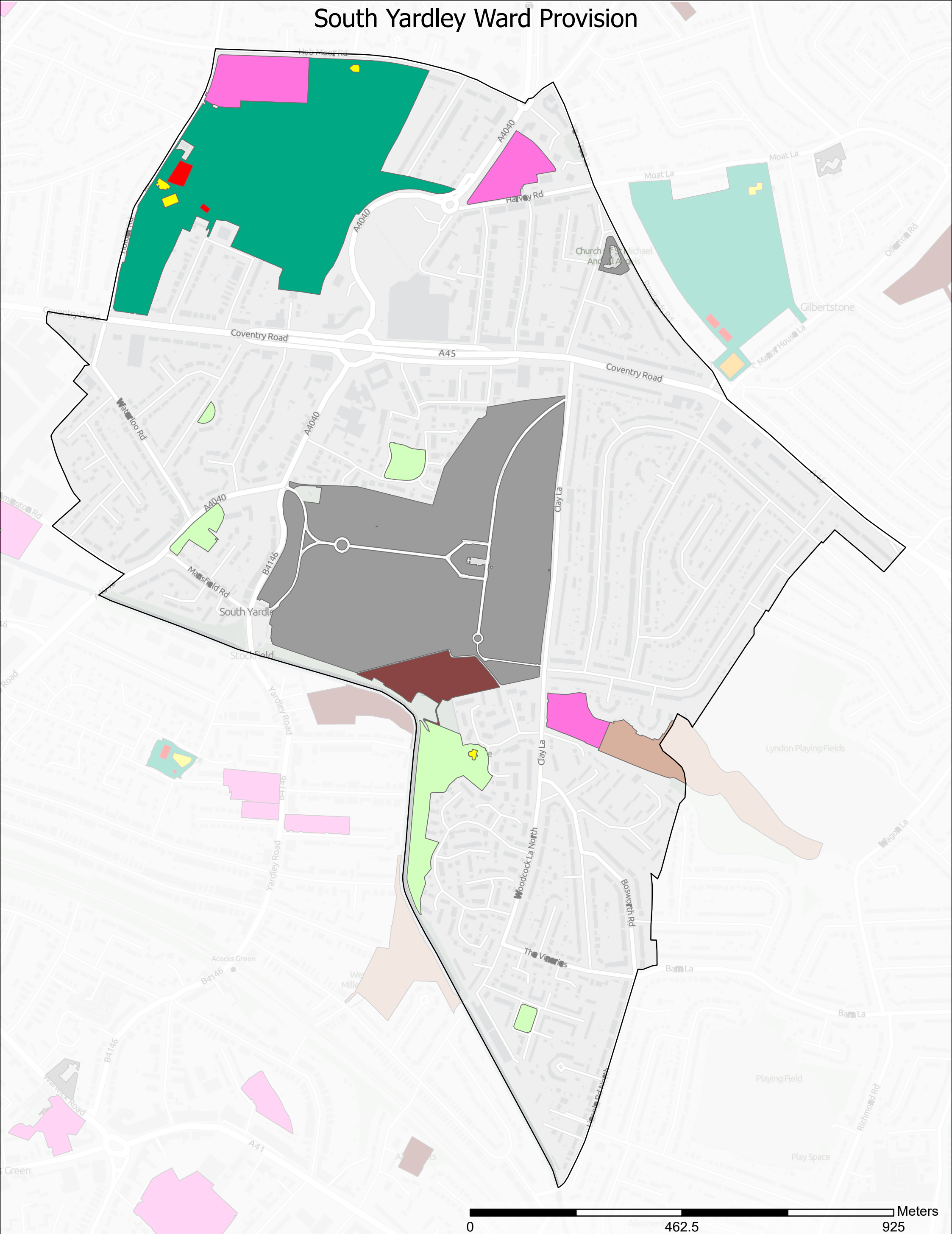
Scale: 1:13,000  
Date: 06/10/2022

Contains OS data © Crown Copyright and database right 2022  
Contains data from OS Zoomstack





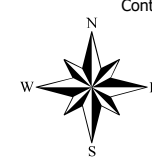
# South Yardley Ward Provision



0 462.5 925 Meters

## Legend

- Accessible Natural Green Space
- Allotments
- Churchyards and Cemeteries
- Education
- Informal Green Space
- Outdoor Sport (Fixed)
- Parks and Recreation Grounds
- Play Space (Child)
- Play Space (Youth)



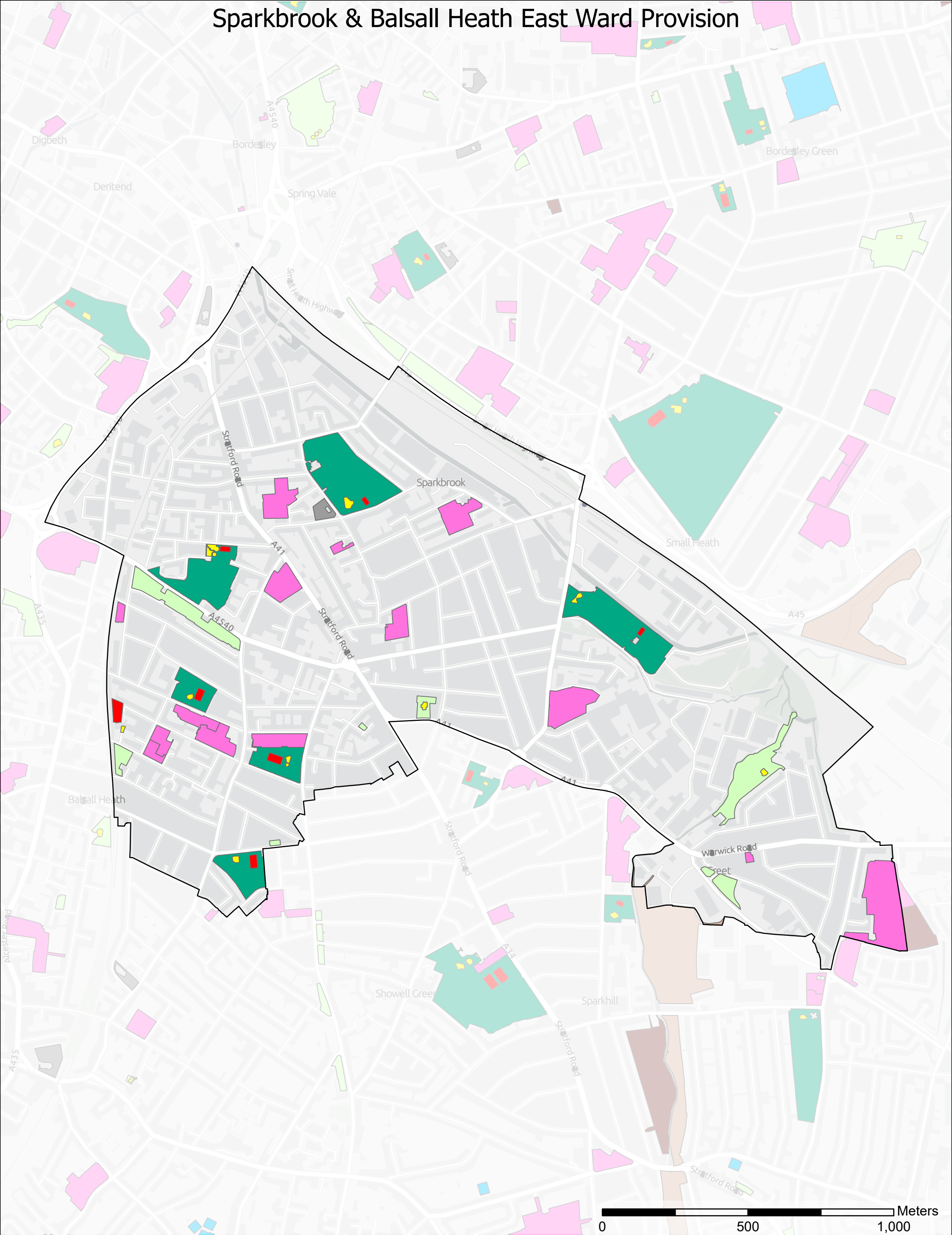
Scale: 1:7,000  
Date: 06/10/2022

Contains OS data © Crown Copyright and database right 2022  
Contains data from OS Zoomstack





# Sparkbrook & Balsall Heath East Ward Provision

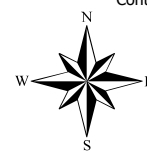


0 500 1,000 Meters

## Legend

- Accessible Natural Green Space
- Allotments
- Churchyards and Cemeteries
- Education
- Informal Green Space

- Outdoor Sport (Private)
- Parks and Recreation Grounds
- Play Space (Child)
- Play Space (Youth)



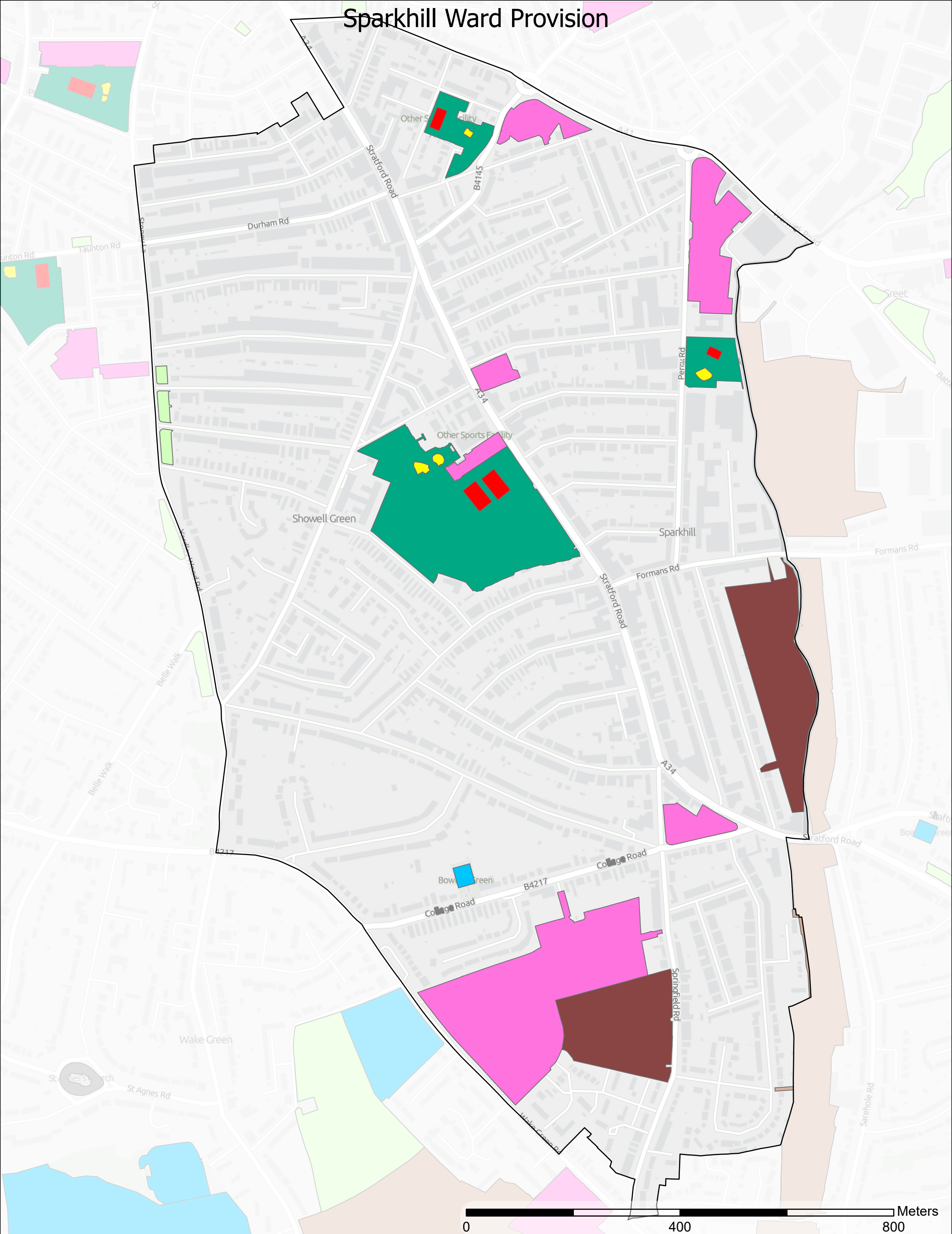
Scale: 1:11,000  
Date: 06/10/2022

Contains OS data © Crown Copyright and database right 2022  
Contains data from OS Zoomstack

**ethos**  
Environmental Planning



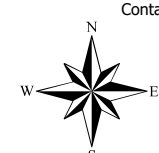
# Sparkhill Ward Provision



0 400 800 Meters

## Legend

- |                                |                              |
|--------------------------------|------------------------------|
| Accessible Natural Green Space | Outdoor Sport (Private)      |
| Allotments                     | Parks and Recreation Grounds |
| Churchyards and Cemeteries     | Play Space (Child)           |
| Education                      | Play Space (Youth)           |
| Informal Green Space           |                              |



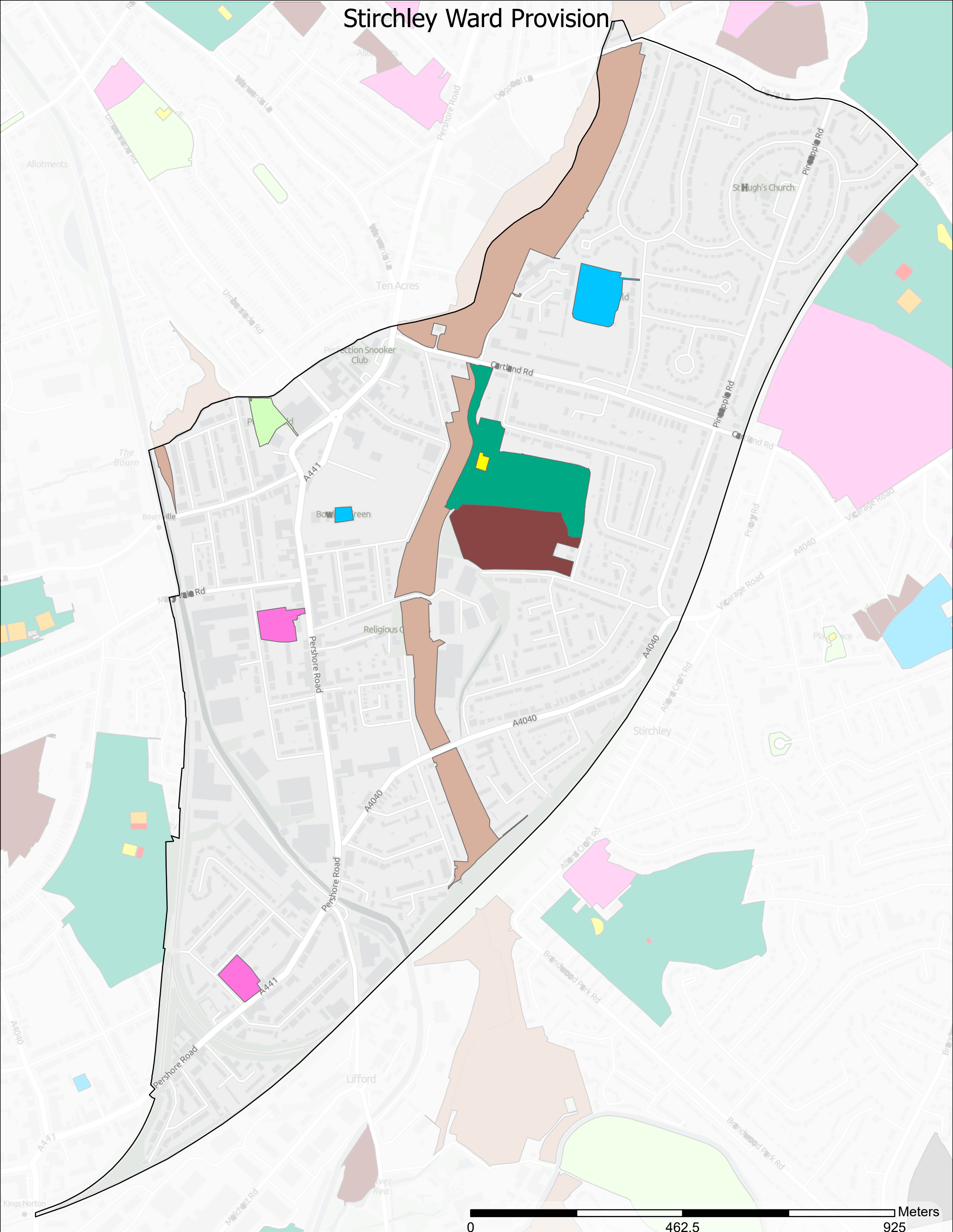
Scale: 1:6,000  
Date: 06/10/2022

Contains OS data © Crown Copyright and database right 2022  
Contains data from OS Zoomstack

**ethos**  
Environmental Planning

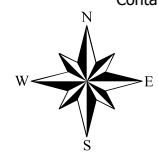


# Stirchley Ward Provision



## Legend

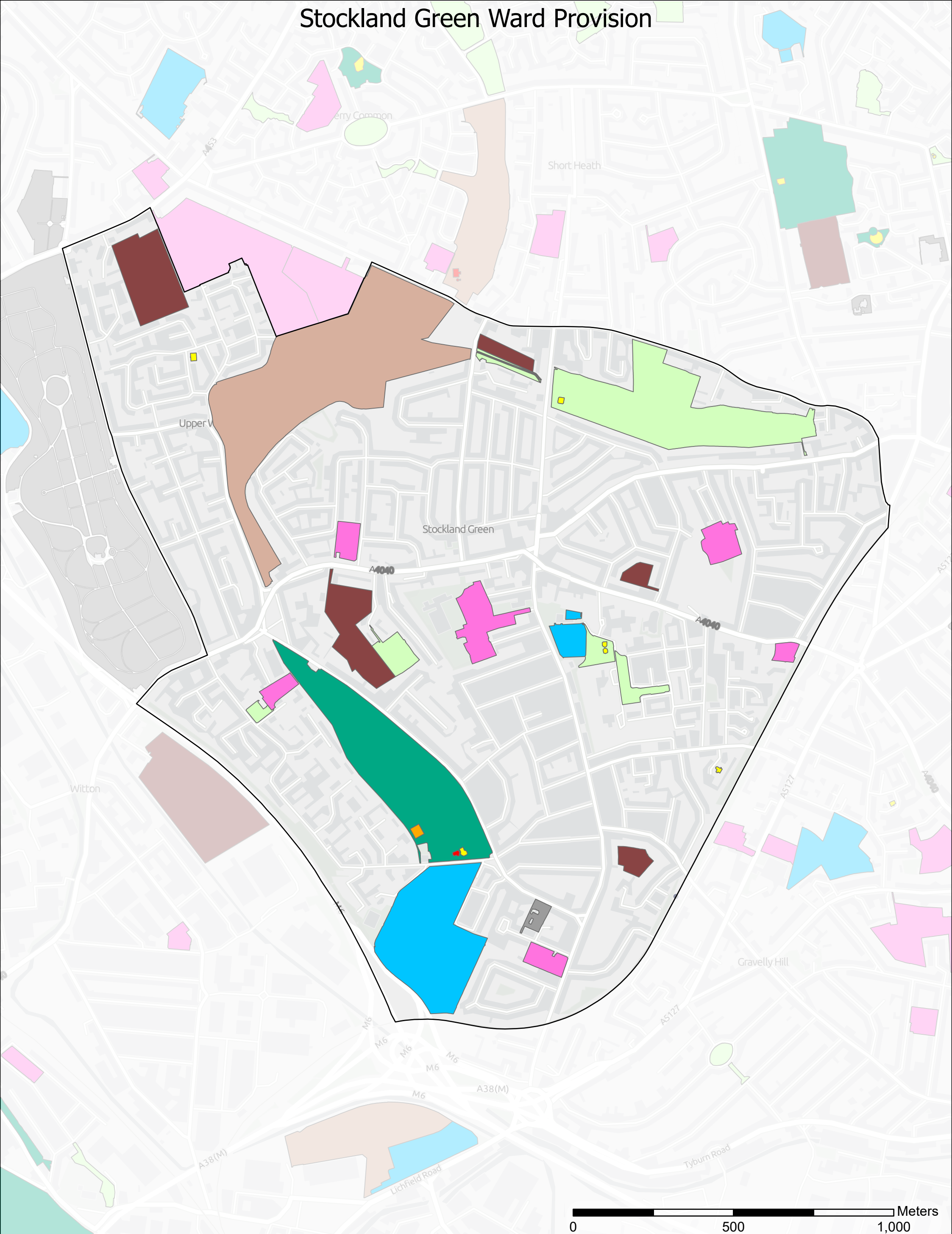
- |                                |                              |
|--------------------------------|------------------------------|
| Accessible Natural Green Space | Outdoor Sport (Fixed)        |
| Allotments                     | Outdoor Sport (Private)      |
| Churchyards and Cemeteries     | Parks and Recreation Grounds |
| Education                      | Play Space (Child)           |
| Informal Green Space           | Play Space (Youth)           |



Scale: 1:7,000  
Date: 06/10/2022



# Stockland Green Ward Provision

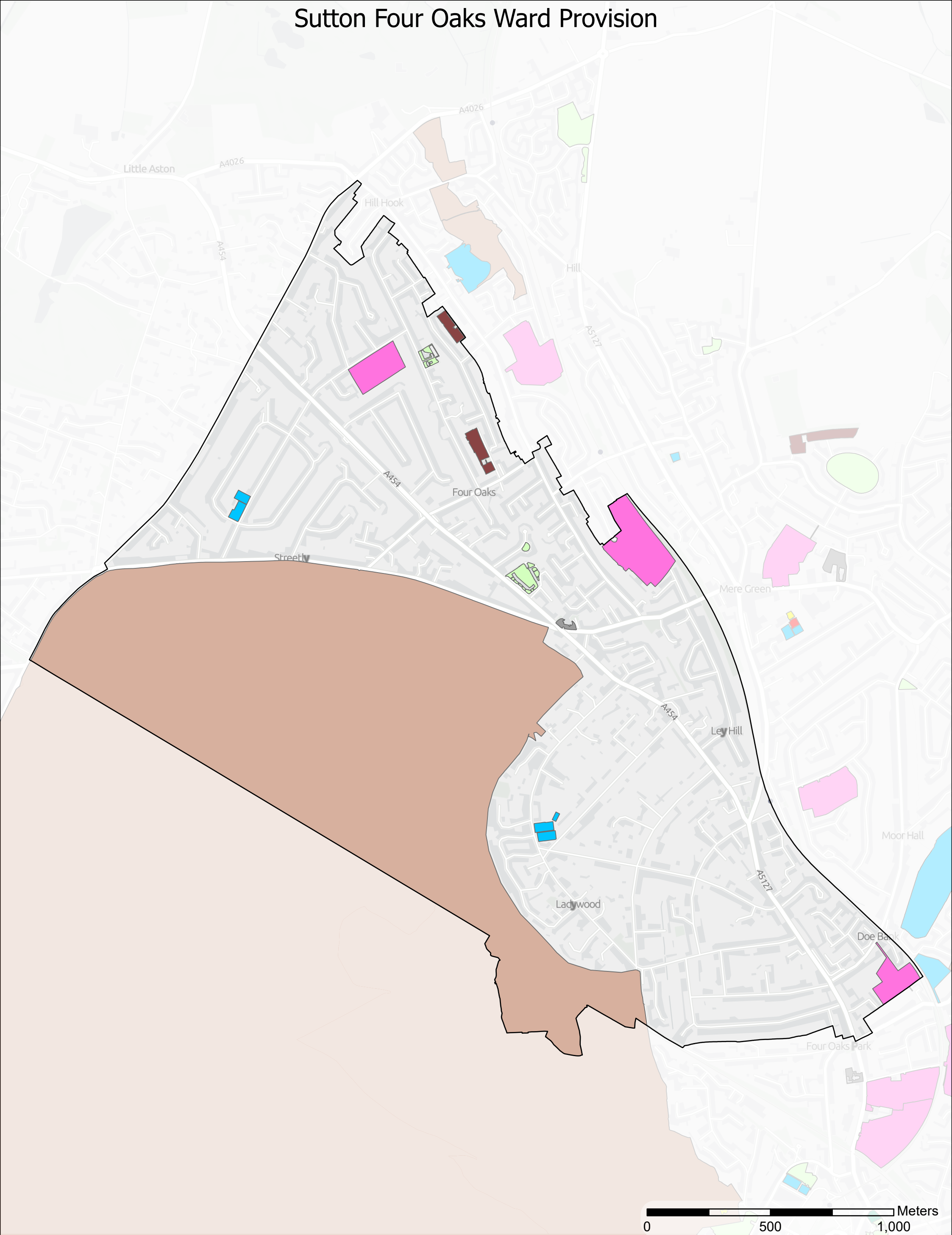


## Legend

- |                                |                              |
|--------------------------------|------------------------------|
| Accessible Natural Green Space | Outdoor Sport (Fixed)        |
| Allotments                     | Outdoor Sport (Private)      |
| Churchyards and Cemeteries     | Parks and Recreation Grounds |
| Education                      | Play Space (Child)           |
| Informal Green Space           | Play Space (Youth)           |



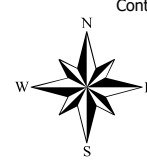
# Sutton Four Oaks Ward Provision



## Legend

- Accessible Natural Green Space
- Allotments
- Churchyards and Cemeteries
- Education
- Informal Green Space

- Outdoor Sport (Private)
- Parks and Recreation Grounds
- Play Space (Child)
- Play Space (Youth)



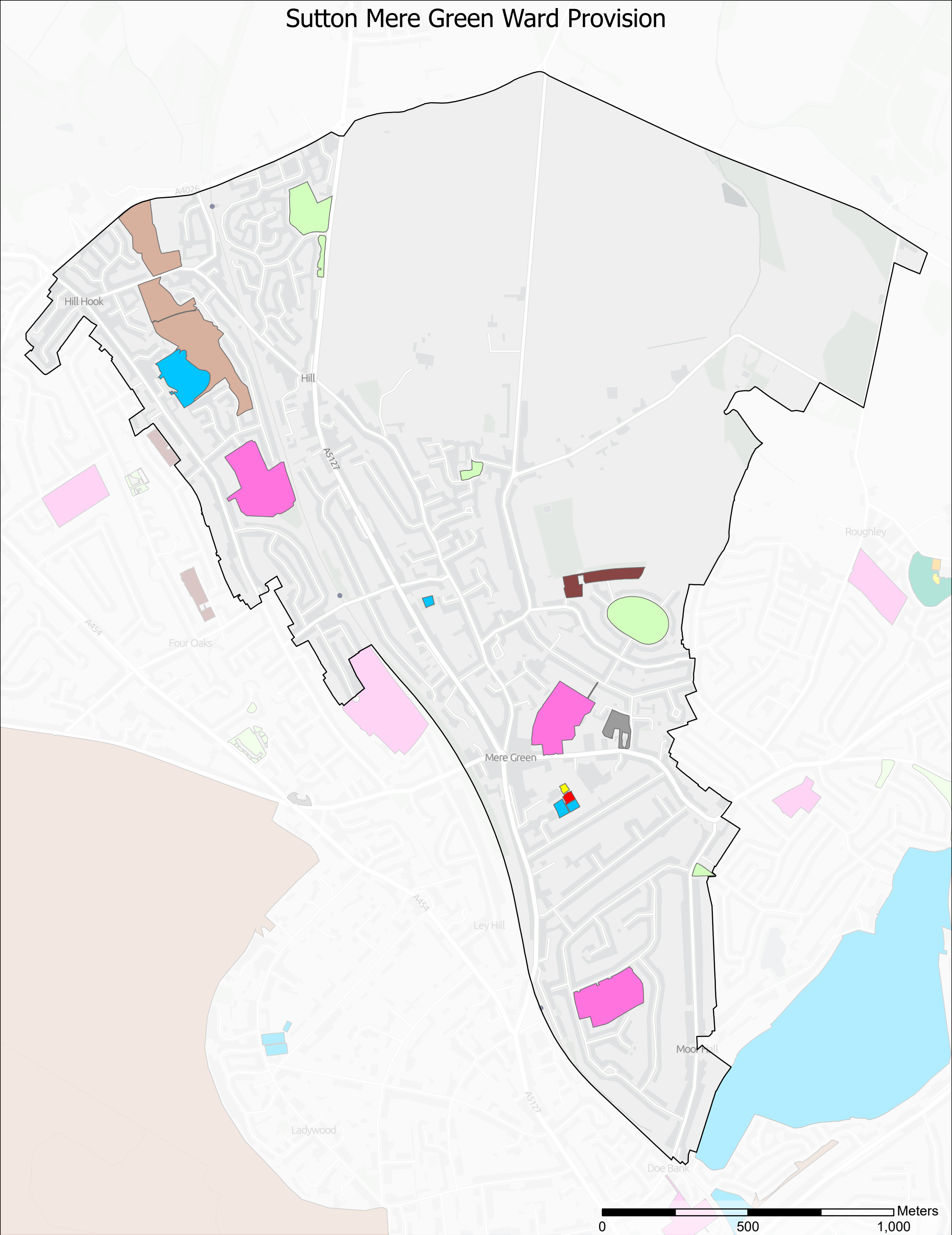
Scale: 1:13,000  
Date: 06/10/2022

Contains OS data © Crown Copyright and database right 2022  
Contains data from OS Zoomstack

**ethos**  
Environmental Planning



# Sutton Mere Green Ward Provision



## Legend

- |                                |                              |
|--------------------------------|------------------------------|
| Accessible Natural Green Space | Outdoor Sport (Fixed)        |
| Allotments                     | Outdoor Sport (Private)      |
| Churchyards and Cemeteries     | Parks and Recreation Grounds |
| Education                      | Play Space (Child)           |
| Informal Green Space           | Play Space (Youth)           |

Contains OS data © Crown Copyright and database right 2022  
Contains data from OS Zoomstack

Scale: 1:11,000  
Date: 06/10/2022

**ethos**  
Environmental Planning