



COMMUNITY HEALTH PROFILES **2022**

Birmingham Public Health Division
September 2022

A BOLDER HEALTHIER BIRMINGHAM

Public Health Evidence Reports

1. Statutory Reports

Joint Strategic Needs Assessment

- A regularly refreshed snapshot of the health and wellbeing of the citizens of Birmingham and the factors underpinning this.
- Highlights the inequalities at a high level across the city.
- Draws together data from across the Council and public sector.

Annual Director of Public Health Report

- Annual independent report of the Director of Public Health on a specific topic/focus area to shine a light on an issue.

Public Health Evidence Reports

2. Elective Evidence Reports

Deep Dive Needs Assessments

- Structured needs assessments into a specific area/topic/community
- Brings together published and grey literature, service data and qualitative data from community insight
- Makes recommendations for action

Community Health Profiles

- Desk top analysis of published evidence and grey literature and population survey data.
- Snapshot of inequalities.



Topic Based Commissions

- Evolving methodology using evidence collation with active community collaboration to focus on creating evidence-based solutions.

The Community Health Profiles

- Birmingham has an ambition for a **bolder healthier city**, becoming a city in which, every citizen can live a healthy enjoyable life.
- The Community Health Profiles help us understand the gaps (health inequalities) in achieving this ambition in different communities.
- The Profiles describe the health inequalities of a specific community of identity or interest or experience.
- Setting out the differences in need shown by the evidence can help the Council, it's partners and communities take action to close the gaps and improve the health of people in Birmingham.
- The Community Health Profiles will be published on the Council's website as resources to support greater understanding and awareness of the issues affecting different communities in our city.
- We aim to refresh them every 5-8 years depending on the data availability.

Evidence Report Forward Plan

Community Health Profiles

- Sikh – (Sept 2021)
- Bangladeshi- (Sept 2021)
- Muslim
- Lesbian
- Trans
- d/Deaf & Hearing Loss
- Sight Loss
- **Nigerian** ←
- Indian
- Caribbean Islands
Commonwealth States
- Somali
- Kenyan
- Pakistani

Deep Dive Reports

- Veterans (published)
- End of Life (published)
- Learning Disabilities
- Dual Diagnosis
- Mobility Impairment
- Sensory Impairment

Commissions

- Birmingham Poverty Truth Commission – focus on Housing issues
- Birmingham & Lewisham African & Caribbean Health Inequalities Review

Community Health Profiles aim to...



To find and review the physical health, mental health, lifestyle behavioural and wider determinants (social and economic factors) that exist in health in a specific community.



To collect and present this information using the 10 key priority areas identified in the Health and Wellbeing Strategy for Birmingham - Creating a Bolder Healthier City.



To engage with the local communities on the evidence found and highlight the opportunities to address inequalities.



To promote the use of these summaries for Local Authority and wider system use for community and service development.

Health and Wellbeing Themes

Getting the Best Start in Life

Mental Wellness and Balance

Healthy and Affordable Food

Active at Every Age and Ability

Working and Learning Well

Protect and Detect

Ageing and Dying Well

Closing the Gaps

Green and Sustainable Future

Mitigating the Legacy of COVID-19

Methodology

- A comprehensive review of
 - Academic literature, including PubMed, Census 2011
 - Grey literature, including national, voluntary and community reports, PHE and NHS, google/google scholar
 - Health & Wellbeing data review and research synthesis according to specified health and well-being indicators
- Comparator groups include the White British and Black African populations of the UK.

Limitations of the Findings

- Population data used is from the 2011 Census and is likely to have changed since then. Conclusions on populations must therefore be taken with caution.
- There is a sparsity of literature on the specific communities within Birmingham. Census data also does not provide information on second and later generations of migrants from the target communities.
- Data is often aggregated together and analyses 'Black African' population as a homogenous group, instead of looking at specific inequalities of particular communities.

Sharing Community Health Profiles

- Written report & PowerPoint slide set
- Published on the [BCC Communities Pages](#)
- YouTube highlights video
- Webinars for Nigerian community and wider partners



A large, stylized letter 'B' graphic on the left side of the page. The 'B' is filled with a pink color and has a thick black outline. The interior of the 'B' is divided into sections of yellow and light blue. The background behind the 'B' is a teal color.

COMMUNITY HEALTH PROFILES **2022**

Nigerian Profile

Weblink: [Nigerian community health profile | Community health profiles | Birmingham City Council](#)

A BOLDER HEALTHIER BIRMINGHAM

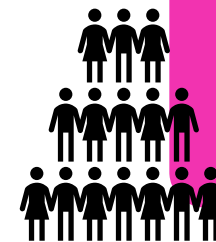
Overview of Nigerian Community

- **512** languages are currently spoken in Nigeria
- Languages include: Igbo, Yoruba, Ijaw, Fulfulde, Ogoni, and Edo, Kanuri, and Hausa.
- Nigeria gained independence from the UK in 1960 and became a republic in 1963, electing to stay a member of the Commonwealth the same year.^[1]
- Migration from Central and Western Africa has been recorded since before 1961, but increased steadily in the following decades, reaching a peak during the 1990's.^[2]

The UK has around 168,675 Nigerians living in the UK^[3]



Census data reports 3,399 Nigerian-born residents within Birmingham^[3]



Overview of Inequalities

Stillbirth rates higher than general population

Lower vaccination rates

Nigerian women are more likely to experience domestic abuse

High rates of obesity amongst Nigerian women

Negative experiences working for the NHS, including racism and bullying

High rates of FGM amongst Nigerian women

Getting the best start in life

- The total fertility rate (TFR) of the Nigeria country of birth group (**3.32**) was above UK-born average (1.84).^[4]
- In 2020 Nigerian-born mothers contributed to **3.1%** of all live births to mothers born outside the UK.^[5]
- **0.82%** of all live births in Birmingham from 2012-2014 were to mothers born in Nigeria but **1.72%** of all stillbirths.^[6]
- In 2019-20 Black African children in England, aged 4-5, had the highest rate (**15.9%**) of obesity.^[7]



High total fertility rates



Vulnerable to adverse birth outcomes



Limited Nigerian specific UK data



High rates of childhood obesity

Mental Wellness and Balance

- Black African group had the highest proportion of all groups admitted to hospital for mental health (**18.2%**).^[8]
- Increased risk of being treated for serious mental illness such as schizophrenia and mania.^[9]
- First generation immigrant women from Nigeria who came to the UK on a partner/husbands visa are at high risk of domestic violence.^[10]



Substance misuse

- Black African men had one of the lowest rates of current cigarette smoking (**21%**), lower than the general population (24%).^[7]
- The percentage of people taking any illicit drug in the past year was highest for the 'Black/Black British' group (**14.3%** for men and **9.7%** for women).^[11]

Healthy and Affordable Food



Obesity

- **89%** of Nigerian women in one study population were classified as overweight or obese.

BMI and Waist Circumference

- Black African men had a mean BMI somewhat lower (26.4) than men in the general population. However, mean BMI was markedly higher among Black African (28.8) women.^[7,12]

Healthy Eating

- Only **44.2%** of those in the 'Black' ethnic group (data only available for the pan-ethnicity), lowest rate of all ethnic groups in study.^[13]

Active at Every Age and Ability

Limited data on physical activity levels of the Nigerian community in the UK.



- **35%** of Black African men and **29%** of Black African women had high activity levels, compared to 37% and 25% of the general population.^[7]
- The Active Lives Survey shows that women from Black ethnic groups were reported to be most likely to report being physically inactive and least likely to report being active.^[13]

Working and learning well

Housing

- Black Africans had the one of the highest proportions in social rented housing (**42%**), only exceeded by mixed White and Black Caribbeans (43%) and Black Other (48%).^[14]

Employment and Education

- The proportion of Nigerian migrants with degree-level qualifications was higher among those who arrived in the UK before 1991 (**61%**) compared with those who arrived 1991-2000 (**56%**) and 2001-2011 (**54%**).^[15,16]
- Employment rates are high for both Nigerian males (**72%**) and Nigerian females (**60%**).^[14]



Protect and Detect

Attending Screenings

- Prostate cancer is the leading cause of cancer amongst Nigerian men.
- An investigation of breast cancer screening uptake found Black Africans had low attendance of first call (**49%**) and routine call (**64%**) uptake of breast cancer screening.^[17]



Sexual Health

- In 2013, an estimated 38,700 Black Africans were HIV positive and this group constitutes two-thirds (**65%**, 38,700) of all heterosexual people living with HIV.^[18]

Female Genital Mutilation (FGM)

- **27%** of Nigerian women between the ages of 15 and 49 were victims of FGM in 2012.^[19]
- Prevalence of the practice has decreased and in 2015 a federal law banned the practice.

Ageing and Dying Well

- Prevalence of diabetes is lowest within the Black African group at 2.1% for women and 5% for men.^[7]
- Prevalence of dementia in 'Black' ethnic group is **28%** higher for males and **18%** higher for females compared with the 'White' ethnic group.^[20]
- Black groups in the UK generally have a significantly lower risk of heart disease despite evidence that they have a high prevalence of hypertension and obesity.



Closing the Gaps and COVID-19



Closing the Gaps

- Life expectancy for Black African females was **88.9** years, the highest across ten ethnic groups.
- ONS data shows that for Black African males, life expectancy was **83.8** years.^[21]

Mitigating the Legacy of COVID-19

- The risk of COVID-19-related hospitalisation was increased in Black ethnic group.
- Black Africans were reported as being one of the most vaccine hesitant groups (**34.4%**).^[22]



COMMUNITY HEALTH PROFILES **2022**

Nigerian Profile
Infographics

A BOLDER HEALTHIER BIRMINGHAM

INTERNATIONAL, NATIONAL AND BIRMINGHAM

168,675 PEOPLE IN THE 2011 CENSUS CITED NIGERIA AS THEIR COUNTRY OF BIRTH

This was the largest population of 'Black Africans' born overseas

NIGERIAN-BORN BLACK AFRICANS COMPRISED **17%** of all Black Africans, including the UK-born, in 2011

60.2% OF THE BORN IN NIGERIA GROUP WERE RECENT MIGRANTS

MAIN REASONS FOR MIGRATION



ACCOMPANY/JOIN



WORK



FORMAL STUDY



OTHER*

*get married, seek asylum, as a visitor or other reason

3,399 PERSONS BORN IN NIGERIA AND RESIDENT IN BIRMINGHAM IN 2011 CENSUS DATA

23.5% OF THE LLSOAS IN BIRMINGHAM (2011) HAD NO NIGERIAN MIGRANTS

OVERVIEW

OF THE **29,991** BLACK AFRICANS IN BIRMINGHAM

14,841 CHRISTIAN **12,705** MUSLIM **590** NO RELIGION

The main religions in Nigeria reflect those of Black Africans

512  LANGUAGES ARE CURRENTLY SPOKEN IN NIGERIA

OF THE 8,628 PASSPORT HOLDERS BORN IN NIGERIA AND RESIDENT IN THE WEST MIDLANDS,


2,366 UK PASSPORTS **5,607**  NIGERIAN PASSPORTS

MITIGATING THE LEGACY OF COVID-19

THE RISK OF COVID-19 RELATED HOSPITALISATION WAS INCREASED IN BLACK ETHNIC GROUP



EARLY COVID-19 DATA SUGGESTED THAT BLACK AFRICANS HAD THE LOWEST PROPORTION OF PEOPLE VACCINATED COMPARED TO OTHER ETHNIC GROUPS

15.9% 

ADDITIONALLY BLACK AFRICANS WERE REPORTED AS BEING ONE OF THE MOST VACCINE HESITANT GROUPS

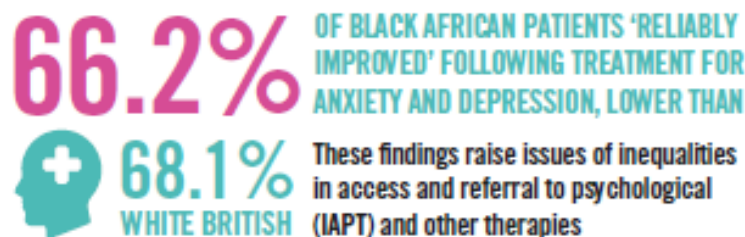
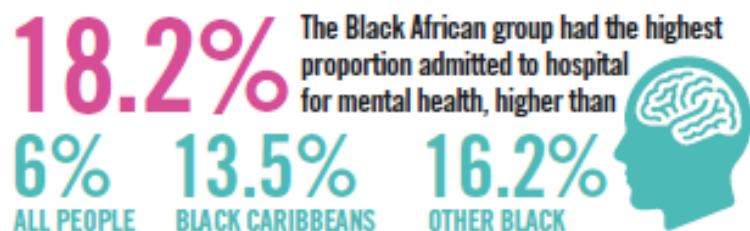
34.4% 

CONTRIBUTING TO A GREEN AND SUSTAINABLE FUTURE

THERE IS NO PUBLISHED LITERATURE ON A GREEN AND SUSTAINABLE FUTURE THAT CAN BE STRATIFIED BY ETHNIC GROUP OR COUNTRY OF BIRTH, WITH RESPECT TO THE NIGERIAN POPULATION IN BIRMINGHAM



MENTAL WELLNESS AND BALANCE



According to the 2004 Health Survey for England Black African men had one of the lowest rates of current cigarette smoking



BELOW THE GENERAL POPULATION 24%

The percentage of people taking any illicit drug in the past year was



IN ONE SURVEY ALMOST ALL OF THE PARTICIPANTS WHO HAD EXPERIENCED DOMESTIC VIOLENCE IN A RELATIONSHIPS WERE FIRST GENERATION IMMIGRANTS FROM NIGERIA, who came to the UK on the entry or residence permit (visa) of their partner or husband



HEALTHY AND AFFORDABLE FOOD

POPULAR AND TRADITIONAL NIGERIAN FOODS INCLUDE



JOLLOF RICE, IYAN (POUNDED YAM), AMÀLÀ (YAM FLOUR/ CASSAVA FLOUR/ PLANTAIN FLOUR), OGBONO SOUP (AFRICAN MANGO SEED SOUP), PUFF-PUFF (FRIED SWEET DOUGH BALL), ÀKÀRÀ (FRIED BEAN CAKE), PEPPER SOUP, AND SUYA (SPICY GRILLED KEBAB)



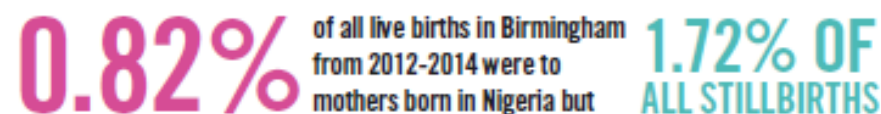
THE PERCENTAGE OF PEOPLE WHO EAT **5-A-DAY**



was the lowest in the 'Black' group (data only for the pan-ethnicity was available)



GETTING THE BEST START IN LIFE



Late booking for antenatal care amongst Black African women. Barriers to access include:



Cultural beliefs where pregnancy disclosure within 13 weeks was considered inappropriate



Lack of information about the booking appointment



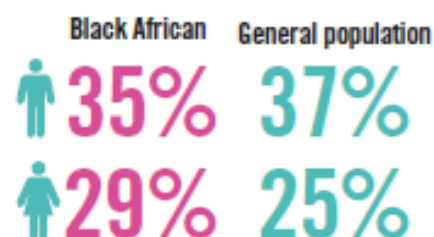
Unresolved immigration issues including concern about their immigration status



COMPARED TO NATIONAL CONTROLS, BEING NIGERIAN WAS ASSOCIATED WITH PRETERM BIRTH AND CAESAREAN SECTION

ACTIVE AT EVERY AGE & ABILITY

HIGH ACTIVITY LEVELS



PHYSICAL INACTIVITY AMONGST MALE ETHNIC GROUPS



WOMEN FROM BLACK ETHNIC GROUPS WERE REPORTED TO BE MOST LIKELY TO REPORT BEING PHYSICALLY INACTIVE AND LEAST LIKELY TO REPORT BEING ACTIVE



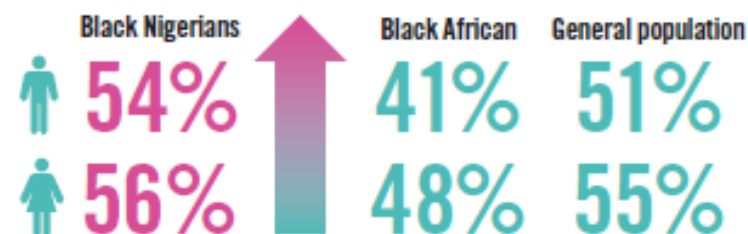
WORKING AND LEARNING WELL

THE PROPORTION OF NIGERIAN MIGRANTS WITH DEGREE-LEVEL QUALIFICATIONS WHO ARRIVED IN THE UK



61% BEFORE 1991
56% 1991-2000
54% 2001-2011

BLACK NIGERIANS ACHIEVED AT A HIGHER LEVEL (5+ A*-C GCSE'S)



NIGERIA IS AMONGST THE TOP COUNTRIES OF DOMICILE OF INTERNATIONAL STUDENTS AT UK HIGHER EDUCATION INSTITUTIONS



EMPLOYMENT RATES ARE HIGH FOR NIGERIANS



UK-BORN NIGERIANS HAD AN EMPLOYMENT RATE OF **58.6%**



Within the NHS workforce 34 African countries contribute 20,075 staff

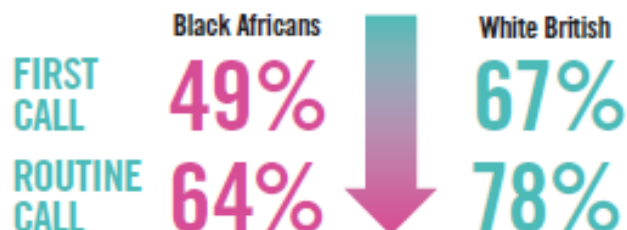
25% OF THOSE ARE NIGERIANS

PROTECT AND DETECT

PROSTATE CANCER IS THE LEADING CAUSE OF CANCER AMONGST NIGERIAN MEN



AN INVESTIGATION OF BREAST CANCER SCREENING UPTAKE FOUND BLACK AFRICANS HAD LOW ATTENDANCE OF



BARRIERS TO BREAST CANCER SCREENING



LOW KNOWLEDGE OF SERVICES



TABOO SURROUNDING WOMEN'S HEALTH



SACRED NATURE OF SEXUALITY

IN 2013, AN ESTIMATED **38,700** Black Africans were HIV positive and this group constitutes two-thirds (65%, 38,700) of all heterosexual people living with HIV

27% OF NIGERIAN WOMEN BETWEEN THE AGES OF 15 AND 49 WERE VICTIMS OF FGM IN 2012
However, prevalence of the practice has decreased and in 2015 a federal law banned the practice

AGEING AND DYING WELL



PREVALENCE OF DIABETES IS LOWEST WITHIN THE BLACK AFRICAN GROUP AT



5%



2.1%

The most common causes of death for the Black African population in England and Wales



ISCHAEMIC HEART DISEASE FOR MEN



DEMENTIA AND ALZHEIMER'S DISEASE FOR WOMEN

PREVALENCE OF DEMENTIA IN 'BLACK' ETHNIC GROUP IS



28% HIGHER FOR MALES



18% HIGHER FOR FEMALES

compared with the 'White' ethnic group



BLACK AND MINORITY ETHNIC GROUPS ARE MORE LIKELY TO DIE IN A HOSPITAL AND LESS LIKELY TO DIE AT HOME OR IN A HOSPICE

CLOSING THE GAPS

LIFE EXPECTANCY FOR BLACK AFRICAN FEMALES WAS

88.9 YEARS

For Black African males, life expectancy was

83.8 YEARS

THE HIGHEST ACROSS TEN ETHNIC GROUPS

LIMITATIONS TO DATA

NHS RACE AND HEALTH OBSERVATORY IDENTIFIED A NUMBER OF ISSUES WHICH MAY HAVE LED TO AN OVERESTIMATE OF LIFE EXPECTANCY FOR ETHNIC MINORITY PEOPLE COMPARED TO WHITE PEOPLE



References

- [1] Kirk-Greene, Anthony Hamilton Millard, Udo, Reuben Kenrick, Ajayi, J.F. Ade and Falola, Toyin O. Encyclopaedia Britannica. Nigeria (28 April 2022). Accessed at: <https://www.britannica.com/place/Nigeria>
- [2] 2011 Census. Detailed UK migration statistics. [online]. Accessed at: <https://www.ons.gov.uk/peoplepopulationandcommunity/populationandmigration/migrationwithintheuk/datasets/2011censusdetailedukmigrationstatistics>
- [3] 2011 Census
- [4] Coleman D and Dubuc S. The fertility of ethnic minority populations in the United Kingdom, 1960s-2006. *Population Studies* 2010; 64(1): 19-41.
- [5] ONS. Births in England and Wales by parents' country of birth. London: ONS, 2015.
- [6] ONS. Births and infant mortality by ethnicity in England and Wales: 2007 to 2019. Live births, stillbirths, infant deaths by ethnicity of the baby occurring annually in England and Wales. London: ONS, 2021 (26 May). Accessed at: <https://www.ons.gov.uk/peoplepopulationandcommunity/healthandsocialcare/childhealth/articles/birthsandinfantmortalitybyethnicityinenglandandwales/2007to2019>
- [7] National Statistics and Health and Social Care Information Centre. 2005. Health survey for England 2004: The health of minority ethnic groups. Leeds, England: National Statistics and NHS health and Social Care Information Centre.
- [8] Health and Social Care Information Centre. Mental health bulletin. Annual report fromMHMDS returns 2013-14. Leeds, England: HSCIC, 2014.
- [9] McKenzie K. Being Black is bad for your health. *The Guardian*, 12 January 2008.
- [10] Femi-Ajao O. Intimate partner violence and abuse against Nigerian women resident in England, UK: a cross-sectional qualitative study. *BMC Women's Health* 2018; 18:123 <https://doi.org/10.1186/s12905-018-0610-4>

References (2)

- [11] NHS Digital (2016). Adults Psychiatric Morbidity Survey: Survey of Mental Health and Wellbeing, England, 2014. Accessed at: <https://digital.nhs.uk/data-and-information/publications/statistical/adult-psychiatric-morbidity-survey/adult-psychiatric-morbidity-survey-survey-of-mental-health-and-wellbeing-england-2014>
- [12] GOV.UK (2021). Overweight adults [online]. Available at: <https://www.ethnicity-facts-figures.service.gov.uk/health/diet-and-exercise/overweight-adults/latest>
- [13] Department for Digital, Culture, Media and Sport/Sport England. Active Lives Survey, 2018, published 2019. Accessed at: <https://www.ethnicity-facts-figures.service.gov.uk/health/diet-and-exercise/healthy-eating-of-5-a-day-among-adults/latest>
- [14] Aspinall, P.J., Chinouya, M.J. (2016). Socio-economic Position. In: The African Diaspora Population in Britain. Migration, Diasporas and Citizenship. Palgrave Macmillan, London. https://doi.org/10.1057/978-1-137-45654-0_6
- [15] Lympelopoulou K, Parameshwaran M. Is there an ethnic group educational gap? In: Jivraj S & Simpson L (eds.). Ethnic Identity and Inequalities in Britain. The dynamics of diversity. Bristol: Policy Press, 2015, pp. 181-198.
- [16] Koser K (ed.). New African diasporas. London: Routledge, 2003.
- [17] Jack RH, Møller H, Robson T, et al. Breast cancer screening uptake among women from different ethnic groups in London: a population-based cohort study. *BMJ Open* 2014;4: e005586. doi:10.1136/bmjopen-2014-005586
- [18] Public Health England. Trends in HIV testing, new diagnoses and people receiving HIV-related care in the United Kingdom: data to the end of December 2019. Health Protection Report Volume 14 Number 20. London: Public Health England, 2020 (3 November).
- [19] Gbadebo BM, Salawu AT, Afolabi RF, Salawu MM, Fagbamigbe AF, and Adebawale AS. Cohort analysis of the state of female genital cutting in Nigeria: prevalence, daughter circumcision and attitude towards its discontinuation. *BMC Women's Health* 2021; 21: 182.

References (3)

[20] Pham TM, Petersen I, Walters K, Raine R, Manthorpe J, Mukadam N, Cooper C. Trends in dementia diagnosis rates in UK ethnic groups: analysis of UK primary care data. *Clinical Epidemiology* 2018; 10: 949-960.

[21] Office for National Statistics. Ethnic differences in life expectancy and mortality from selected causes in England and Wales: 2011 to 2014: Experimental analysis of ethnic differences in life expectancy and cause-specific mortality in England and Wales based on 2011 Census and death registrations. London: ONS, 2021. Accessed at: <https://www.ons.gov.uk/peoplepopulationandcommunity/birthsdeathsandmarriages/lifeexpectancies/articles/ethnicdifferencesinlifeexpectancyandmortalityfromselectedcausesinenglandandwales/2011to2014>

[22] Woolf K, McManus IC, Martin CA, Nellums LB, Guyatte AL, et al. Ethnic differences in SARS-CoV-2 vaccine hesitancy in United Kingdom healthcare workers: Results from the UK-REACH prospective nationwide cohort study. *The Lancet Regional Health – Europe* 2021, <https://doi.org/10.1016/j.lanepe.2021.100180>



[@BhamCityCouncil](#)



[@birminghamcitycouncil](#)



[@birminghamcitycouncil](#)



[birmingham.gov.uk](#)