

Birmingham Weekly COVID-19 Statistics

Weekly report: 17 to 23 April 2022

Birmingham Public Health Division
27/04/2022



Birmingham COVID-19 Statistics

17 to 23 April 2022

Author: Dr Justin Varney (Department of Public Health)

Source: UKHSA data accessed 27/04/22; NHS T&T; NHS NIMS

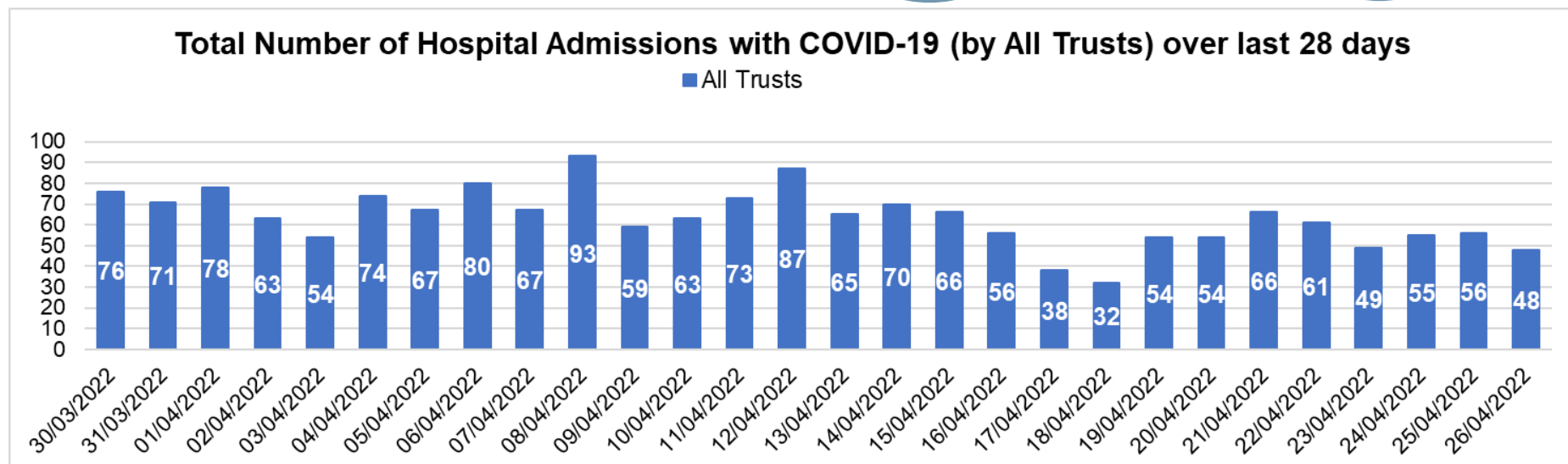
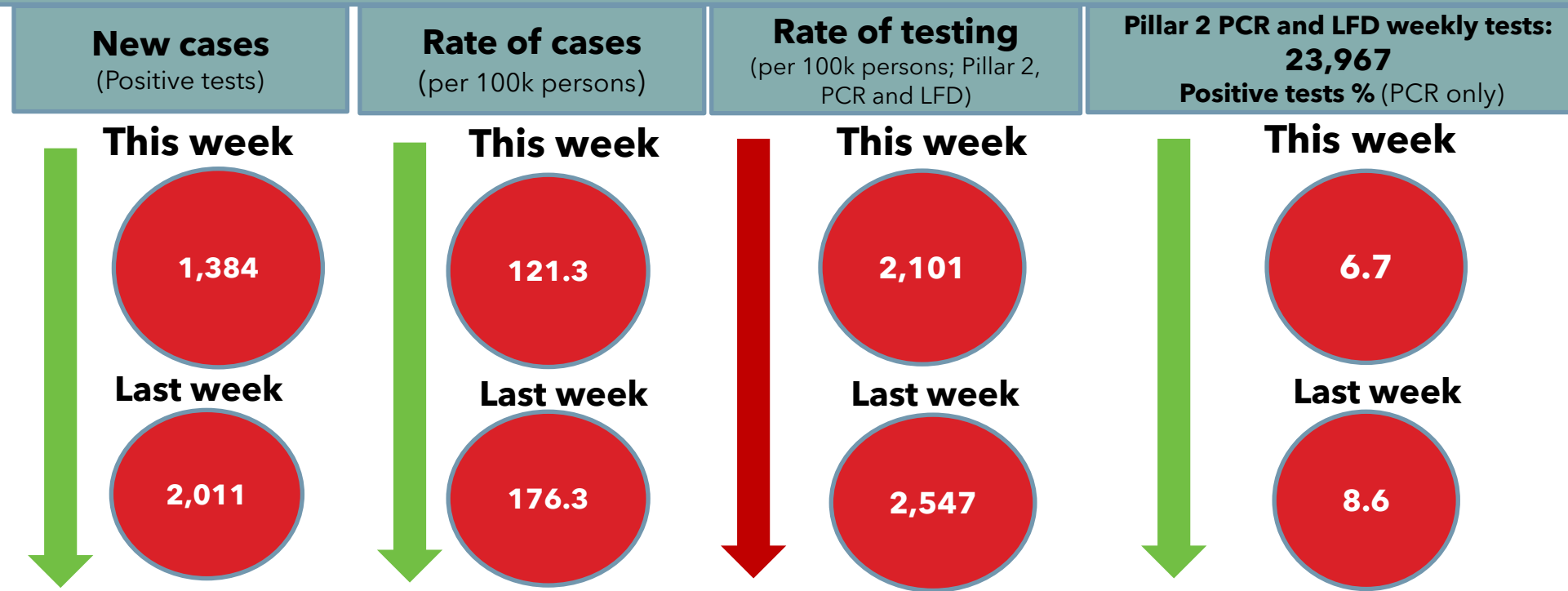
In the 7 days up to 23 April 1,384 cases (121.3/100K) were reported, a 31.2% decrease compared to the previous 7 days with 2,011 cases (176.3/100k). Both the % of positive tests and the rate of testing have decreased, compared to the previous week.

Free testing ended for most people on 1 April, including regular testing of students in education settings. Some limited ongoing free testing will include:

- o Limited symptomatic testing available for a small number of at-risk groups.
- o Free symptomatic testing will remain available to NHS and social care staff.

Hospital admissions have increased slightly. In the 7 days up to 26 April, 389 new cases were admitted, a 2% increase, compared to 381 admissions in the previous week.

COVID-related deaths have decreased by 12%. In the 7 days up to 23 April, 15 deaths were reported, compared to 17 deaths in the previous week.



Birmingham COVID-19 Statistics

17 to 23 April 2022

The **28-Day PCR testing rate** up to 24 April was 1,251/100k, a decrease of 42% compared to the previous 28 days (2,168/100k). In the last 28 days the % of positive PCR tests (Pillar 2) decreased from 27.0% to 20.1%, compared to the previous 28 days.

In the last 7 days, the LFD and PCR combined testing rate decreased by 17% compared to previous week.

Cases in Birmingham have decreased by 24.5% compared to previous 28 days. In the recent 28 days (up to 23 April) 11,414 cases were reported, a case rate of 1,000.8/100k.

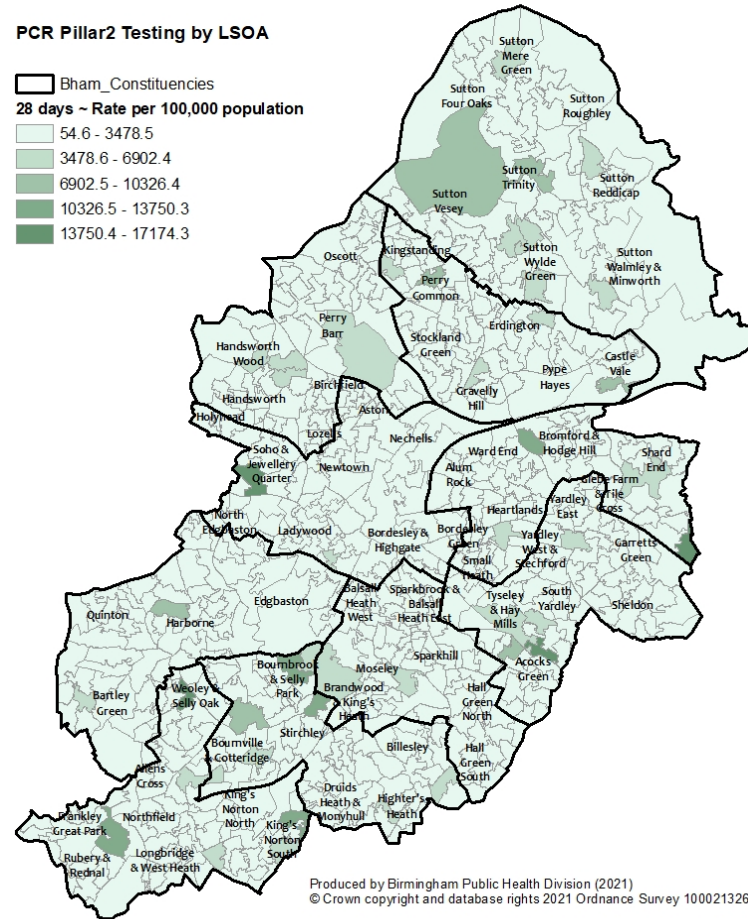
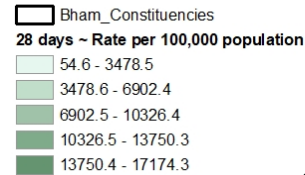
In the 7 days up to 23 April, cases have also fallen by 31.2% from 2,011 cases (176.3/100k) compared to 1,384 cases (121.3/100k) in the previous week. Our case surveillance is dependent upon residents reporting their test results, the absolute number of reported cases may be affected.

The **five wards** with the highest case rates (cases per 100,000 population) in the 28-day period are:

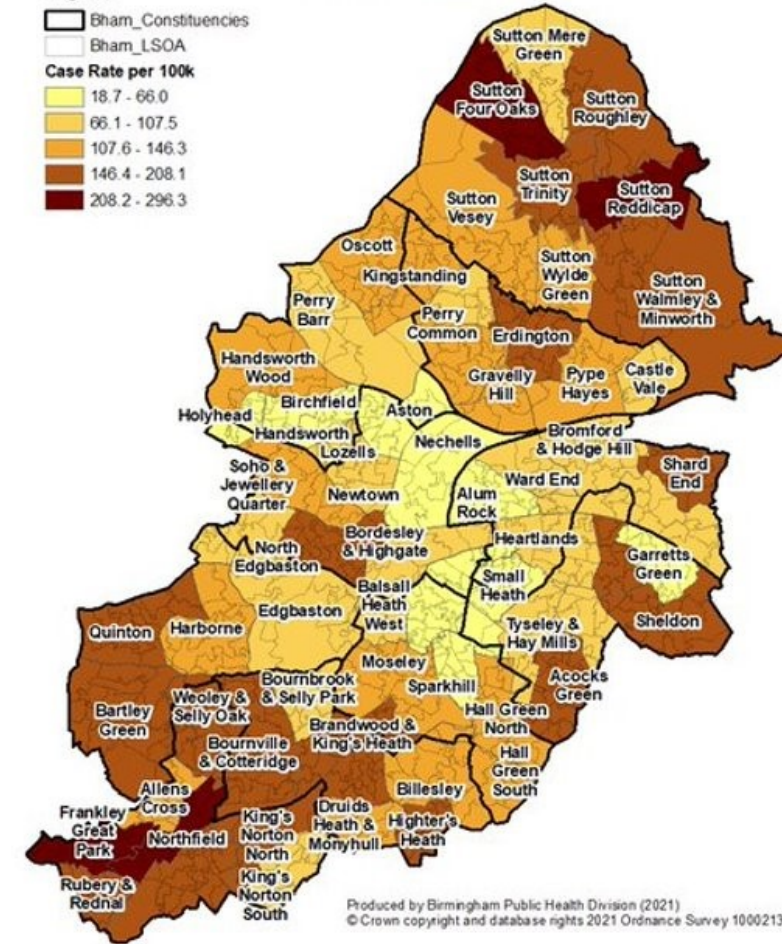
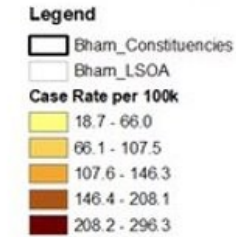
- Stirchley (1,879.3)
- Sutton Trinity (1,854.9)
- Sutton Wylde Green (1,847.5)
- Northfield (1,728.6)
- Frankley Great Park (1,706.9)

Birmingham PCR Testing (Pillar 2): Testing rate per 100K 28 days, 28 March to 24 April 2022

PCR Pillar2 Testing by LSOA



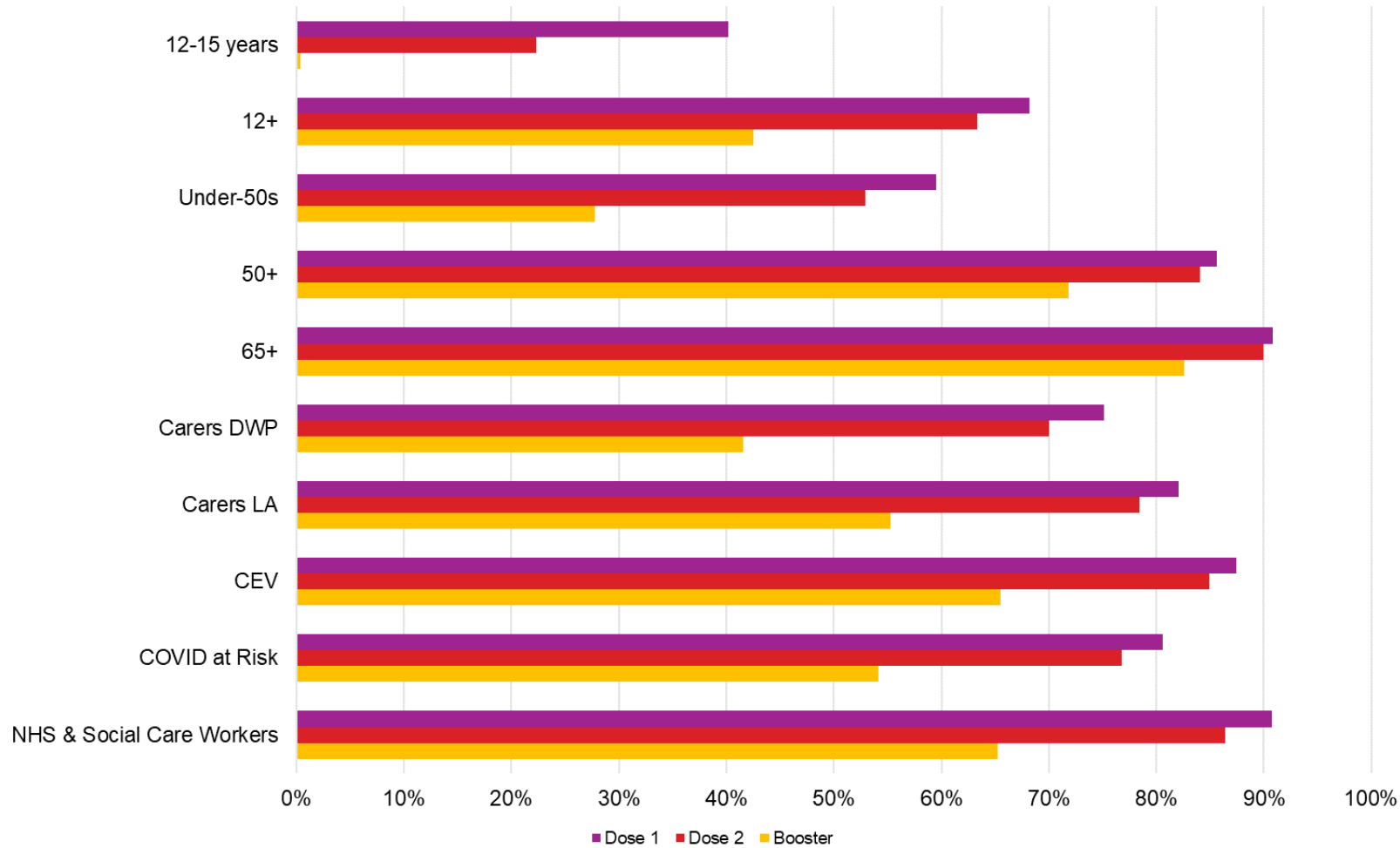
Birmingham Case Rates (Pillar 1 & Pillar 2) 17 to 23 April 2022



Uptake in Birmingham Residents -1st, 2nd and Booster Doses

NIMS Data (Extracted 25/04/2022)

Vaccine 1st, 2nd and Booster % Uptake among Birmingham Residents



- Uptake of 1st, 2nd and booster doses remain consistently lower amongst under-50s compared to over-50s.
- Identified vulnerable groups including over-65s, clinically extremely vulnerable and COVID at-risk cohorts show good uptake of 1st and 2nd doses, with booster uptake between 50% and 65%.
- Booster uptake in NHS and social care workers is lower compared to the uptake of 1st and 2nd doses.
- CEV - clinically extremely vulnerable group at risk of severe illness from COVID-19
- Carers LA/DWP - Carers under local authority or Department for Work and Pensions jurisdiction

COVID-19 Vaccine Uptake 1st Dose aged 12+ (wards with less than 60% uptake)

NIMS Data (Extracted 25/04/2022)

Wards with under 60% uptake of vaccine

□ Bham_Constituencies

First Dose

58.3% - 59.9%

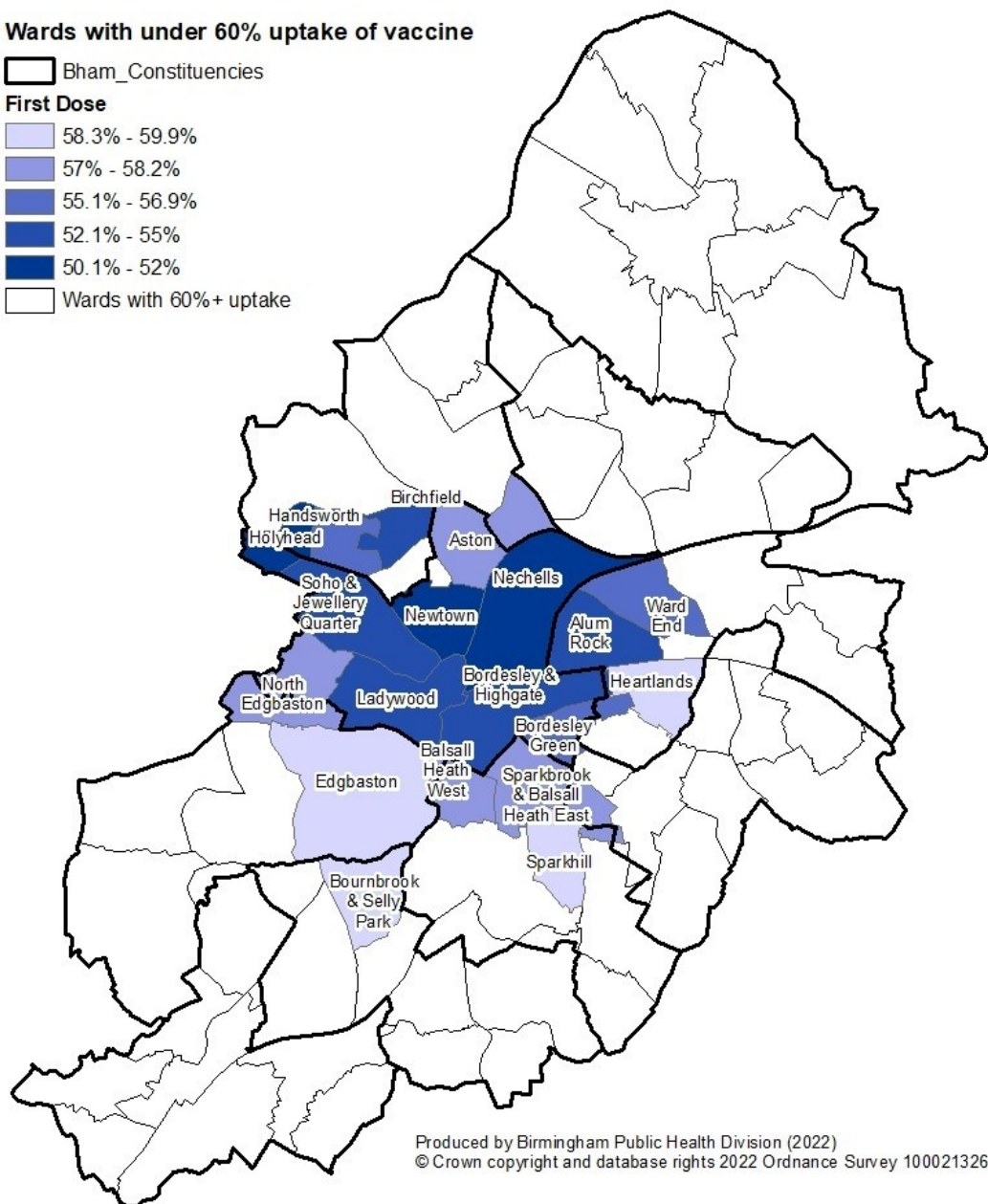
57% - 58.2%

55.1% - 56.9%

52.1% - 55%

50.1% - 52%

□ Wards with 60%+ uptake



Ward Name	Total Uptake 12+	Total Uptake 16+	Total Uptake 12-49	Total Uptake 50+	Total Uptake 65+
Newtown	50.1%	52.1%	45.8%	66.1%	73.1%
Holyhead	50.2%	51.7%	44.5%	65.2%	75.7%
Nechells	52.0%	54.6%	45.8%	74.9%	83.6%
Soho & Jewellery Quarter	53.3%	54.9%	49.1%	67.7%	76.2%
Ladywood	53.8%	54.9%	50.5%	70.0%	76.3%
Bordesley & Highgate	54.0%	56.2%	49.5%	72.5%	79.2%
Birchfield	54.2%	56.2%	48.0%	69.9%	77.7%
Alum Rock	55.0%	58.3%	49.1%	74.9%	78.1%
Bordesley Green	56.1%	58.7%	50.7%	72.7%	79.0%
Handsworth	56.9%	58.5%	51.2%	71.5%	81.1%
Ward End	56.9%	60.6%	50.1%	78.3%	83.8%
Balsall Heath West	57.3%	59.8%	49.5%	78.4%	83.9%
Sparkbrook & Balsall Heath East	57.7%	60.4%	52.2%	75.0%	80.0%
North Edgbaston	57.9%	59.3%	51.9%	73.7%	83.5%
Aston	58.2%	60.4%	53.0%	74.1%	78.9%
Edgbaston	59.2%	59.5%	51.3%	83.3%	89.2%
Heartlands	59.3%	62.5%	53.0%	78.7%	82.6%
Bournbrook & Selly Park	59.7%	59.9%	55.7%	85.8%	93.7%
Sparkhill	59.9%	62.4%	53.6%	78.2%	82.9%

- The table highlights the wards with less than 60% uptake.
- Although wards with less than 60% uptake of the first dose are still concentrated in the centre of Birmingham, the wards at that level (less than 60% uptake) appear to be reducing.
- Lozells, Small Heath and Gravelly Hill have achieved 60% uptake in mid-February.

COVID-19 Vaccine Uptake 2nd Dose, aged 12+ (wards with less than 60% uptake)

NIMS Data (Extracted 25/04/2022)

Wards with under 60% uptake of vaccine

□ Bham_Constituencies

Second Dose

□ 55.2% - 58.1%

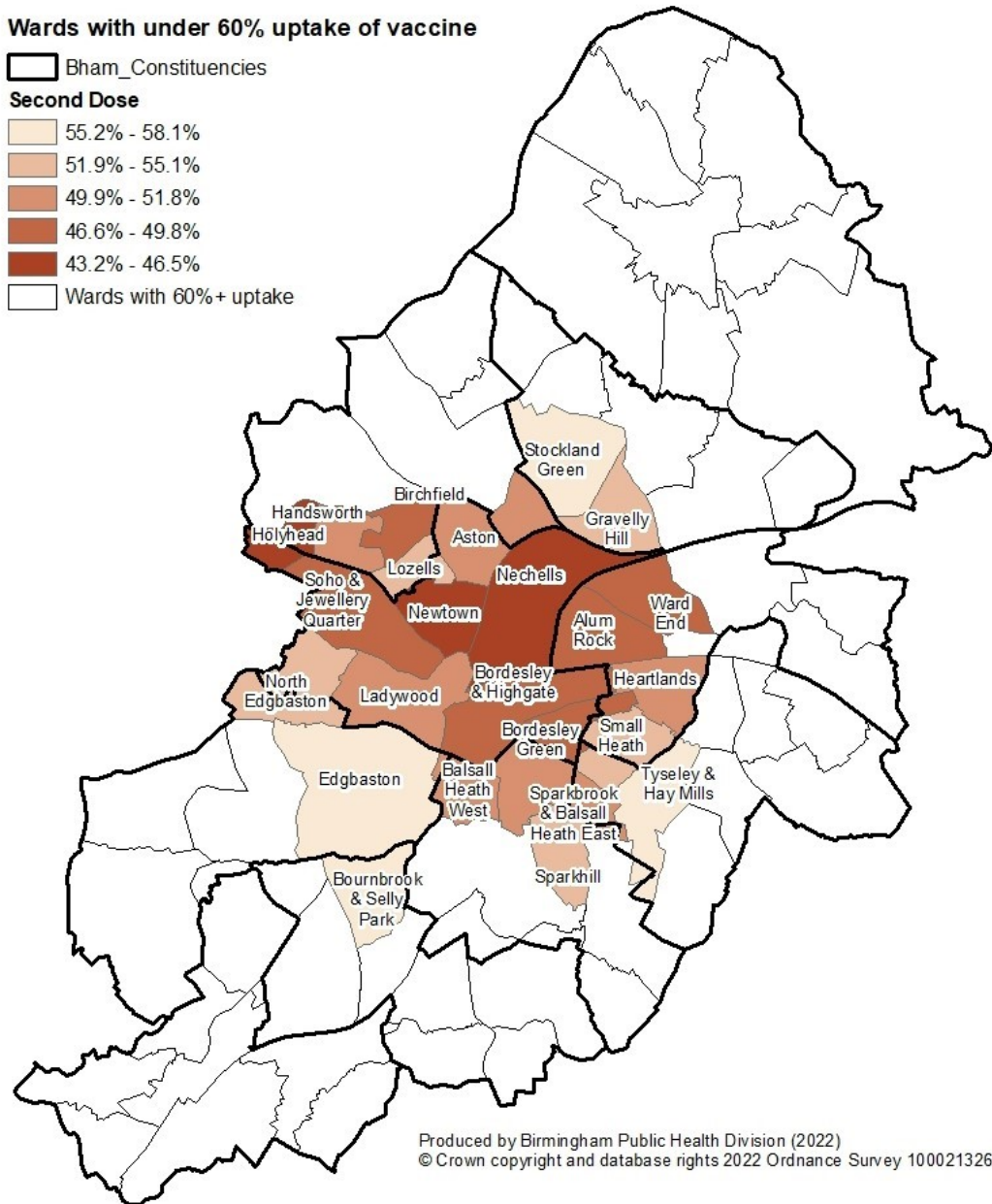
□ 51.9% - 55.1%

□ 49.9% - 51.8%

□ 46.6% - 49.8%

□ 43.2% - 46.5%

□ Wards with 60%+ uptake



Ward Name	Total Uptake 12+	Total Uptake 16+	Total Uptake 12-49	Total Uptake 50+	Total Uptake 65+
Newtown	43.2%	45.9%	37.9%	63.0%	71.0%
Holyhead	45.1%	47.4%	38.1%	63.5%	74.6%
Nechells	46.5%	49.7%	39.6%	72.1%	81.8%
Alum Rock	48.1%	52.1%	41.0%	72.0%	74.8%
Birchfield	48.5%	51.4%	40.9%	67.8%	76.7%
Soho & Jewellery Quarter	48.5%	50.7%	43.7%	65.1%	74.6%
Bordesley & Highgate	48.6%	51.6%	43.3%	70.1%	77.2%
Bordesley Green	49.2%	52.8%	42.3%	70.4%	76.7%
Ward End	49.8%	54.3%	41.6%	75.5%	81.8%
Handsworth	50.6%	53.2%	43.4%	69.3%	79.8%
Sparkbrook & Balsall					
Heath East	50.9%	54.5%	44.0%	72.4%	78.2%
Ladywood	51.1%	52.4%	47.5%	68.2%	75.3%
Aston	51.4%	54.9%	44.7%	71.9%	77.7%
Balsall Heath West	51.7%	55.2%	42.8%	75.8%	81.4%
Heartlands	51.8%	56.3%	44.0%	75.9%	81.1%
Sparkhill	53.1%	56.6%	45.4%	75.7%	81.4%
North Edgbaston	53.2%	55.3%	46.1%	72.3%	82.6%
Small Heath	53.8%	57.7%	46.2%	76.6%	81.7%
Lozells	54.0%	57.3%	48.4%	71.8%	78.3%
Gravelly Hill	55.1%	57.7%	44.2%	77.7%	87.1%
Stockland Green	56.8%	59.6%	45.4%	80.1%	87.3%
Edgbaston	56.9%	57.8%	48.6%	82.3%	88.5%
Tyseley & Hay Mills	57.4%	60.8%	48.3%	79.5%	84.9%
Bournbrook & Selly Park	58.1%	58.6%	53.9%	85.0%	93.2%

- The table highlights the wards with less than 60% uptake.
- As with 1st dose, areas with less than 60% uptake of the 2nd dose still appear to be concentrated in the centre of Birmingham.
- Yardley West & Stechford achieved 60% in mid-April.

COVID-19 Vaccine Uptake Booster Dose, aged 12+

(wards with less than 60% uptake)

NIMS Data (Extracted 25/04/2022)

Wards with under 60% uptake of vaccine

□ Bham_Constituencies

Booster Dose

53.2% - 59.2%

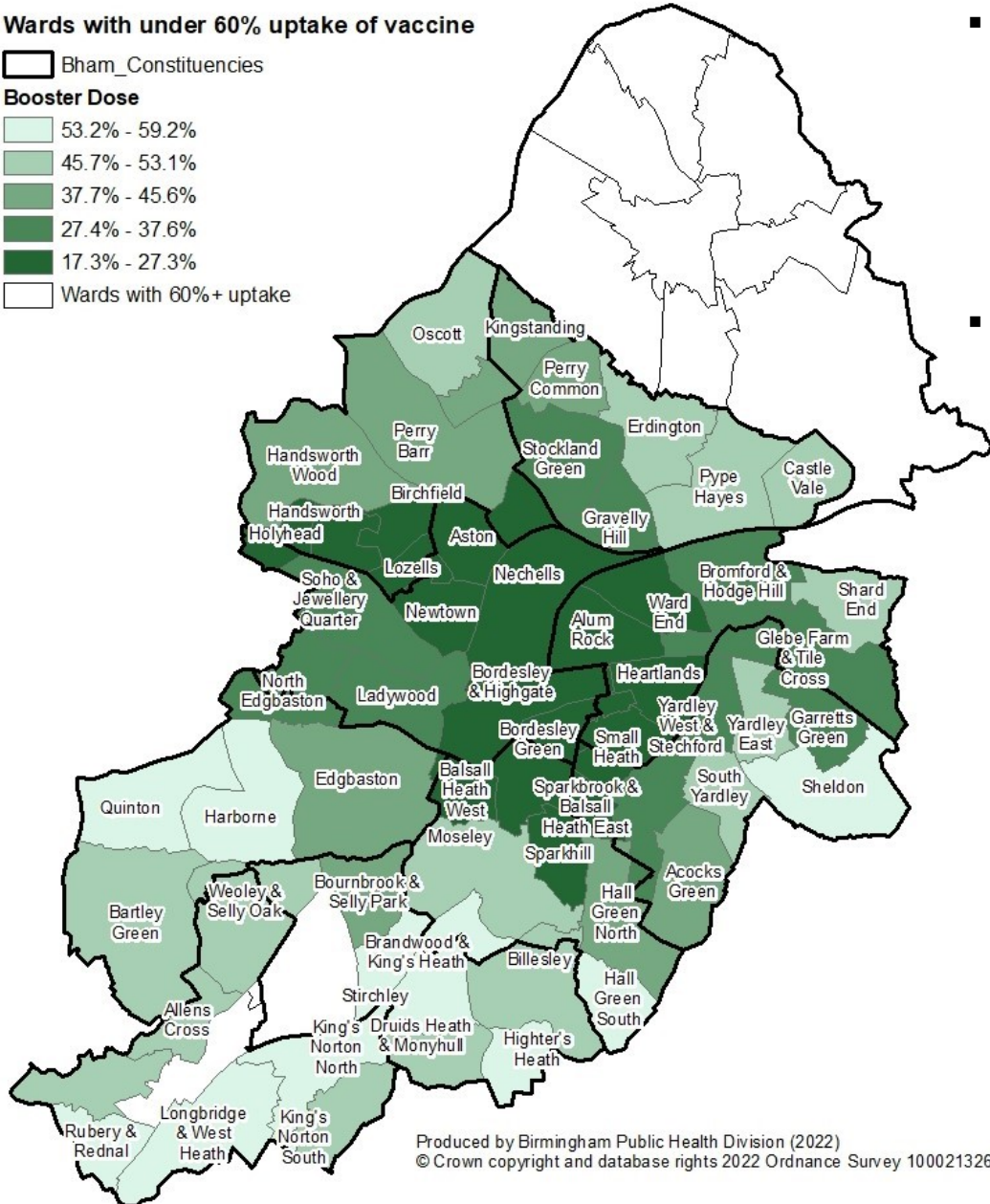
45.7% - 53.1%

37.7% - 45.6%

27.4% - 37.6%

17.3% - 27.3%

□ Wards with 60%+ uptake



- With the exception of the Northern/more affluent areas, less than 60% booster uptake is widespread in other parts of Birmingham.
- Uptake in Bournville & Cotteridge (63.1%) and Northfield (65.2%) is higher than its surrounding areas in the South, with less than 60% uptake.

Ward Name	Total Uptake 12+	Total Uptake 16+	Total Uptake 12-49	Total Uptake 50+	Total Uptake 65+
Alum Rock	17.3%	19.0%	10.7%	39.5%	47.0%
Ward End	19.7%	21.9%	10.7%	47.7%	60.4%
Sparkbrook & Balsall Heath East	20.6%	22.6%	13.2%	43.9%	55.7%
Newtown	20.7%	22.4%	15.0%	41.6%	56.4%
Bordesley Green	21.7%	23.8%	14.2%	44.8%	55.9%
Sparkhill	22.7%	24.7%	14.2%	47.4%	59.2%
Small Heath	23.0%	25.3%	15.0%	47.5%	58.0%
Aston	23.5%	25.6%	15.3%	48.6%	59.7%
Birchfield	23.6%	25.5%	14.2%	47.1%	62.1%
Heartlands	23.6%	26.4%	14.5%	51.9%	65.6%
Lozells	24.3%	26.6%	17.4%	46.3%	56.4%
Nechells	24.5%	26.5%	16.9%	52.7%	67.2%
Holyhead	25.0%	27.1%	16.0%	48.8%	62.4%
Bordesley & Highgate	25.4%	27.4%	19.4%	49.9%	61.5%
Balsall Heath West	25.5%	27.6%	15.9%	51.1%	62.1%
Handsworth	27.3%	29.4%	17.7%	52.0%	65.6%
Soho & Jewellery Quarter	29.3%	31.0%	23.6%	48.9%	59.3%
Tyseley & Hay Mills	32.0%	35.0%	18.9%	63.8%	74.3%
North Edgbaston	32.5%	34.3%	22.9%	57.7%	73.0%
Bromford & Hodge Hill	33.7%	36.9%	18.1%	66.9%	81.1%
Yardley West & Stechford	33.7%	37.0%	19.4%	67.3%	80.7%
Gravelly Hill	34.3%	36.5%	20.2%	63.4%	78.1%
Stockland Green	35.2%	37.7%	20.4%	65.7%	78.9%
Ladywood	35.4%	36.5%	31.0%	56.8%	67.2%
Glebe Farm & Tile Cross	36.2%	39.4%	19.8%	69.4%	81.9%
Garretts Green	37.6%	41.0%	21.5%	70.5%	81.4%
Handsworth Wood	40.1%	42.6%	24.5%	68.0%	79.9%
Hall Green North	41.3%	44.8%	26.2%	72.3%	83.7%
Perry Barr	41.7%	44.4%	23.8%	72.0%	84.2%
Acocks Green	41.8%	45.0%	25.7%	72.2%	82.5%
Kingstanding	42.6%	46.0%	24.7%	72.4%	83.4%
Edgbaston	44.6%	46.4%	34.2%	75.9%	84.8%
Perry Common	45.1%	48.3%	26.9%	74.0%	84.0%
Bournbrook & Selly Park	45.6%	46.6%	40.7%	77.5%	88.9%
Shard End	47.7%	51.1%	27.8%	79.1%	89.0%
Yardley East	48.4%	51.6%	26.8%	78.5%	85.9%
Weoley & Selly Oak	48.6%	52.1%	32.9%	77.4%	87.1%
Castle Vale	49.0%	52.6%	28.1%	80.3%	88.4%
Billesley	49.2%	52.8%	31.7%	77.0%	85.8%
King's Norton South	49.6%	53.6%	31.9%	77.8%	87.1%
South Yardley	49.7%	53.2%	31.7%	78.0%	86.3%
Moseley	50.5%	53.4%	36.5%	73.3%	83.1%
Bartley Green	50.6%	54.0%	32.0%	78.9%	88.5%
Pype Hayes	50.7%	54.2%	32.4%	77.9%	87.3%
Erdington	51.1%	54.0%	33.1%	78.4%	87.9%
Oscott	51.2%	54.6%	32.2%	78.8%	87.4%
Frankley Great Park	51.5%	55.6%	34.4%	80.0%	88.6%
Druids Heath & Monyhull	52.2%	55.6%	34.2%	78.7%	88.2%
Allens Cross	53.1%	57.0%	35.8%	80.5%	89.9%
Sheldon	55.0%	58.2%	34.1%	82.3%	90.0%
Rubery & Rednal	55.2%	58.9%	36.5%	82.7%	90.8%
Harborne	55.4%	58.4%	43.7%	79.3%	87.8%
Highter's Heath	55.4%	58.8%	36.1%	81.6%	89.1%
Quinton	56.3%	59.7%	39.6%	80.8%	88.2%
Stirchley	57.9%	61.1%	46.3%	79.5%	86.8%
Brandwood & King's Heath	58.1%	61.7%	43.2%	80.6%	87.2%
King's Norton North	58.7%	62.9%	39.9%	83.9%	90.6%
Longbridge & West Heath	59.0%	62.3%	39.8%	84.3%	91.8%
Hall Green South	59.2%	63.2%	40.4%	84.0%	90.9%



A BOLDER
HEALTHIER
BIRMINGHAM

For more information please visit
www.birmingham.gov.uk/commonwealth2022

