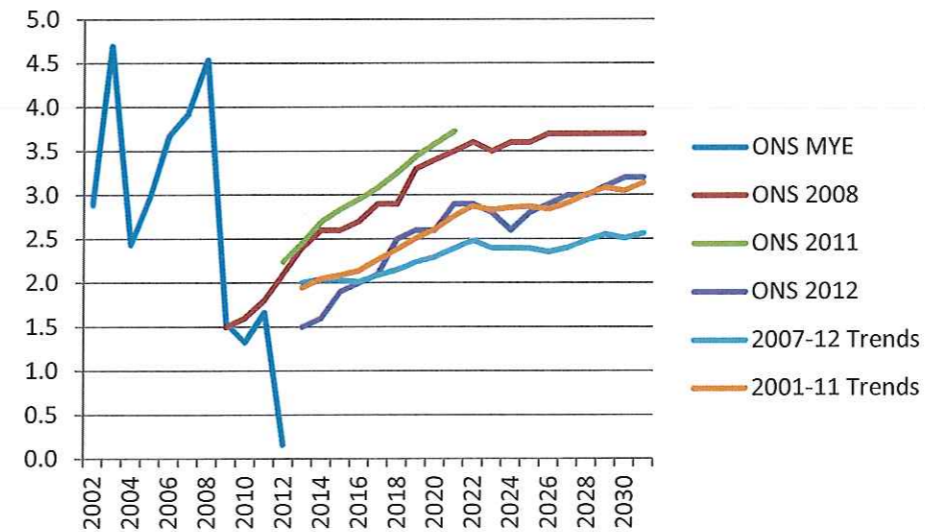
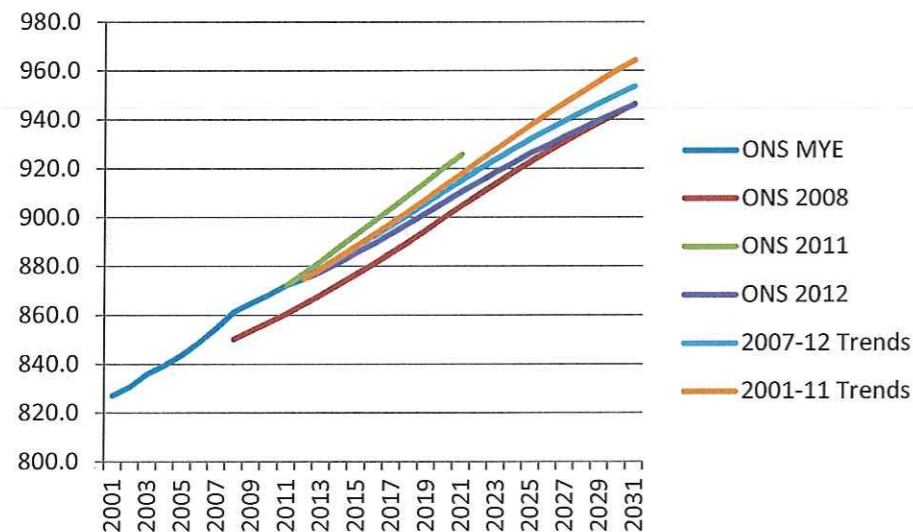


Population (k)

	ONS MYE	ONS 2008	ONS 2011	ONS 2012	2007-12 Tr	2001-11 Trends
2001	827.1					
2002	830.6					
2003	836.0					
2004	839.5					
2005	843.7					
2006	848.8					
2007	854.6					
2008	861.2	850.2				
2009	864.8	853.6				
2010	868.2	856.9				
2011	872.2	860.5	872.2			
2012	874.8	864.4	877.1	874.8	874.8	874.8
2013		868.3	882.3	877.8	879.2	879.1
2014		872.5	887.7	881.4	883.7	883.7
2015		876.7	893.1	885.5	888.2	888.3
2016		880.9	898.5	889.3	892.6	892.9
2017		885.5	903.9	893.5	897.1	897.7
2018		890.1	909.3	897.7	901.6	902.6
2019		894.8	914.7	901.9	906.1	907.7
2020		899.8	920.2	906.1	910.7	912.8
2021		904.7	925.7	910.6	915.2	917.9
2022		909.4		914.5	919.7	923.0
2023		913.9		918.6	924.0	928.0
2024		918.5		922.5	928.1	933.0
2025		922.9		926.4	932.1	937.8
2026		927.0		929.7	936.0	942.5
2027		931.1		933.3	939.7	947.0
2028		935.1		936.6	943.4	951.6
2029		938.9		940.0	946.9	956.0
2030		942.6		943.2	950.3	960.2
2031		946.4		946.2	953.6	964.4

Net Migration (k)

	ONS MYE	ONS 2008	ONS 2011	ONS 2012	2007-12 Tr	2001-11 Trends
2002	2.9					
2003	4.7					
2004	2.4					
2005	3.0					
2006	3.7					
2007	3.9					
2008	4.5					
2009	1.5	1.5				
2010	1.3	1.6				
2011	1.7	1.8				
2012	0.2	2.1	2.2			
2013		2.4	2.5	1.5	2.0	1.9
2014		2.6	2.7	1.6	2.0	2.0
2015		2.6	2.8	1.9	2.0	2.1
2016		2.7	2.9	2.0	2.0	2.1
2017		2.9	3.1	2.1	2.1	2.3
2018		2.9	3.3	2.5	2.2	2.4
2019		3.3	3.4	2.6	2.2	2.5
2020		3.4	3.6	2.6	2.3	2.6
2021		3.5	3.7	2.9	2.4	2.8
2022		3.6		2.9	2.5	2.9
2023		3.5		2.8	2.4	2.8
2024		3.6		2.6	2.4	2.9
2025		3.6		2.8	2.4	2.9
2026		3.7		2.9	2.4	2.8
2027		3.7		3.0	2.4	2.9
2028		3.7		3.0	2.5	3.0
2029		3.7		3.1	2.6	3.1
2030		3.7		3.2	2.5	3.0
2031		3.7		3.2	2.6	3.1

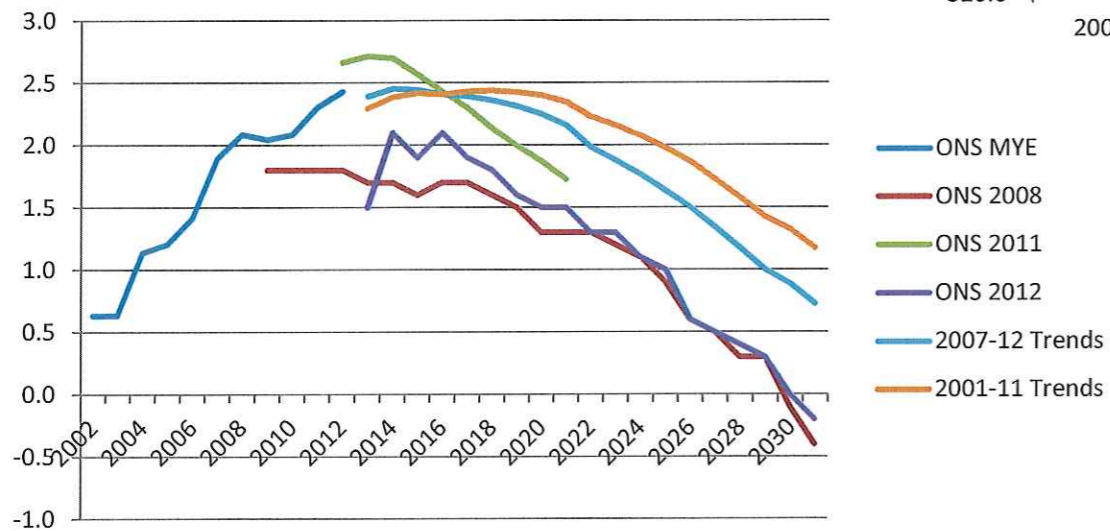
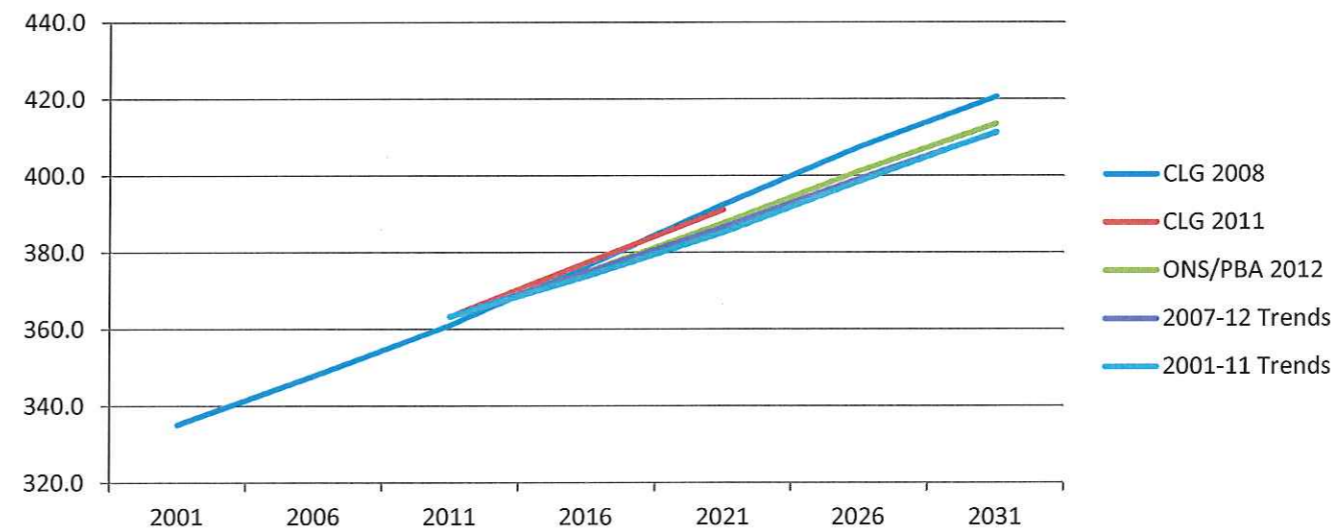


Natural Change (k)

ONS MYE	ONS 2008	ONS 2011	ONS 2012	2007-12 Tr	2001-11 Trends
2002	0.6				
2003	0.6				
2004	1.1				
2005	1.2				
2006	1.4				
2007	1.9				
2008	2.1				
2009	2.0	1.8			
2010	2.1	1.8			
2011	2.3	1.8			
2012	2.4	1.8	2.7		
2013		1.7	2.7	1.5	2.4
2014		1.7	2.7	2.1	2.5
2015		1.6	2.6	1.9	2.4
2016		1.7	2.4	2.1	2.4
2017		1.7	2.3	1.9	2.4
2018		1.6	2.1	1.8	2.4
2019		1.5	2.0	1.6	2.3
2020		1.3	1.9	1.5	2.2
2021		1.3	1.7	1.5	2.2
2022		1.3		1.3	2.0
2023		1.2		1.3	1.9
2024		1.1		1.1	1.8
2025		0.9		1.0	1.6
2026		0.6		0.6	1.5
2027		0.5		0.5	1.3
2028		0.3		0.4	1.2
2029		0.3		0.3	1.0
2030		-0.1		0.0	0.9
2031		-0.4		-0.2	0.7

Households (k)

	CLG 2008	CLG 2011	ONS/PBA	2007-12 Tr	2001-11 Trends
2001	335.1				
2006	347.8				
2011	361.0	363.2	363.2	363.2	363.2
2016	376.5	377.3	374.8	374.8	373.8
2021	392.5	391.1	387.6	386.5	385.3
2026	407.5		401.1	399.2	398.5
2031	420.5		413.5	411.2	411.4
Annual Averages					
2011-31	2975		2513	2398	2410



Total Change	2011-31	59.5	50.3	48.0	48.2
--------------	---------	------	------	------	------



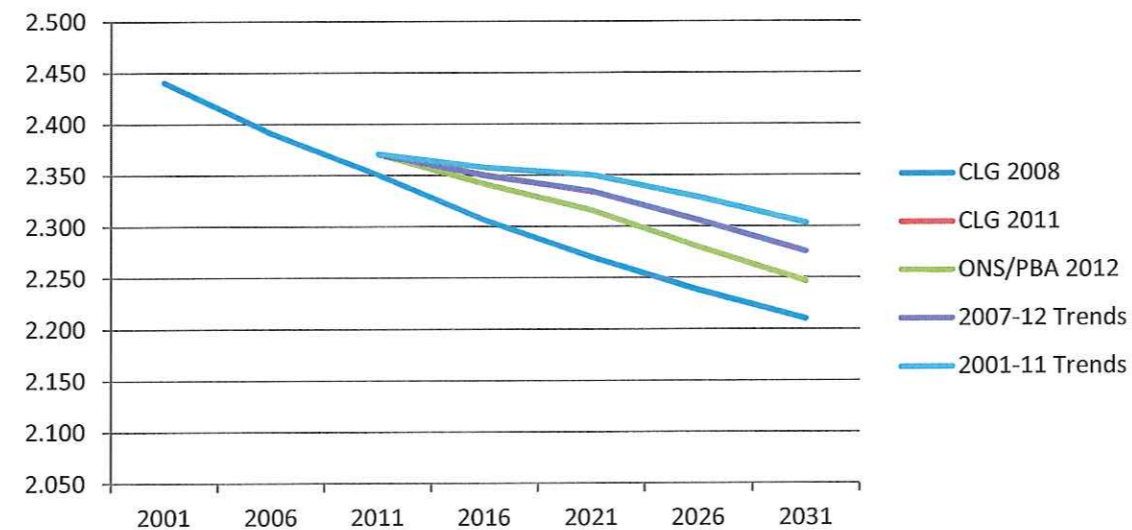
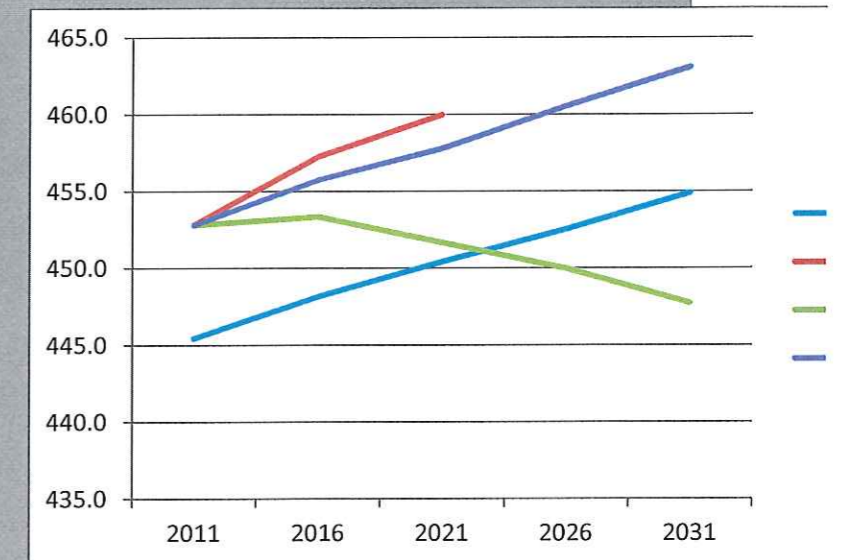
Average Household Size

	CLG 2008	CLG 2011	ONS/PBA	2007-12 Tr	2001-11 Trends
2001	2.441				
2006	2.391				
2011	2.351	2.371	2.371	2.371	2.371
2016	2.306	2.350	2.341	2.350	2.358
2021	2.270	2.334	2.316	2.334	2.350
2026	2.238		2.280	2.306	2.328
2031	2.210		2.247	2.276	2.304

	ONS/CLG 2008	ONS/CLG 2011	ONS/PBA 2012	2007-12 Trends	2001-11 Trends
<b>Population</b>					
2001	827.1				
2011	860.5	872.2	872.2	872.2	872.2
2016	880.9	898.5	889.3	892.6	892.9
2021	904.7	925.7	910.6	915.2	917.9
2026	927.0		929.7	936.0	942.5
2031	946.4		946.2	953.6	964.4
<b>Households</b>					
2001	335.1				
2011	361.0	363.2	363.2	363.2	363.2
2016	376.5	377.3	374.8	374.8	373.8
2021	392.5	391.1	387.6	386.5	385.3
2026	407.5		401.1	399.2	398.5
2031	420.5		413.5	411.2	411.4
2001-11	25.9	28.1	28.1	28.1	28.1
2011-31	59.5		50.3	48.0	48.2
pa	2,975		2,513	2,398	2,410
<b>Average Household Size</b>					
2001	2.441				
2011	2.351	2.371	2.371	2.371	2.371
2016	2.306	2.350	2.341	2.350	2.358
2021	2.270	2.334	2.316	2.334	2.350
2026	2.238		2.280	2.306	2.328
2031	2.210		2.247	2.276	2.304

Resident Labour Force

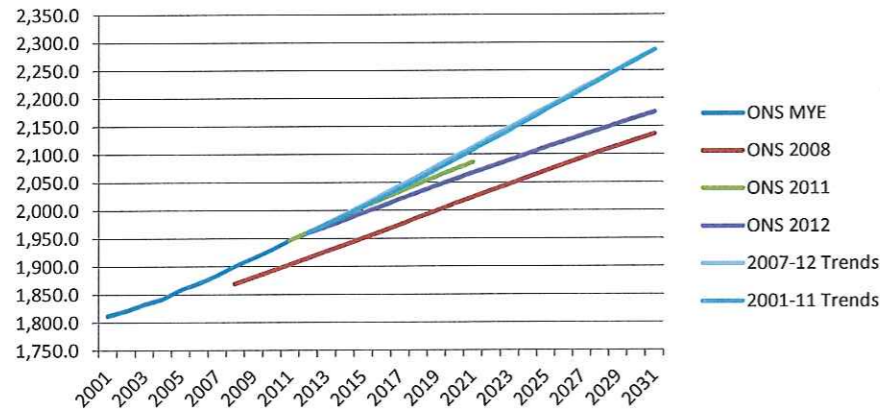
	ONS 2008	ONS 2011	2007-12 Trends	2001-11 Trends
2011	445.4	452.8	452.8	452.8
2016	448.2	457.2	453.4	455.8
2021	450.4	460.0	451.7	457.8
2026	452.6		450.0	460.5
2031	454.9		447.7	463.1
2011-21	5.0	7.2	-1.2	
2021-31	4.5		-3.9	
2011-31	9.5		-5.1	





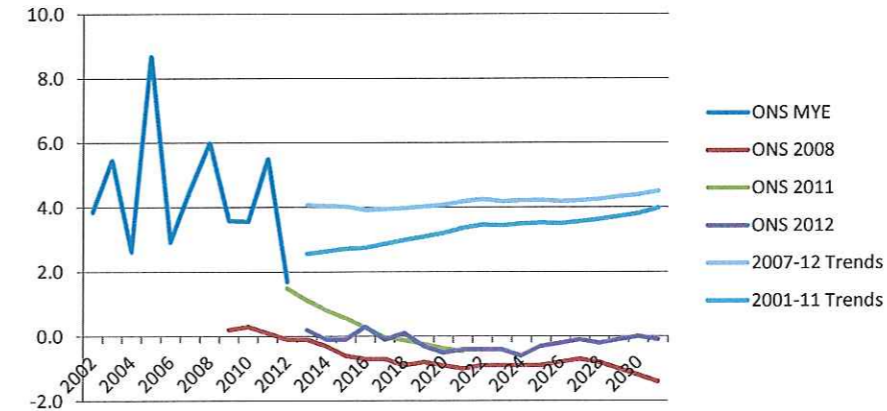
Population (k)

	ONS MYE	ONS 2008	ONS 2011	ONS 2012	2007-12 Trends	2001-11 T No UPC	Capacity
2001	1,811.8						
2002	1,821.0						
2003	1,832.3						
2004	1,841.9						
2005	1,858.4						
2006	1,869.6						
2007	1,883.6						
2008	1,900.2	1,869.4					
2009	1,914.9	1,880.5					
2010	1,929.3	1,891.9					
2011	1,946.5	1,903.4	1,946.5				
2012	1,960.2	1,915.1	1,961.3	1,960.2	1,960.2	1,960.2	1,960.2
2013		1,926.7	1,976.3	1,971.2	1,976.4	1,975.0	1,973.6
2014		1,938.6	1,991.1	1,983.1	1,993.1	1,990.4	1,987.4
2015		1,950.4	2,005.6	1,995.3	2,009.9	2,006.2	2,001.7
2016		1,962.3	2,019.8	2,007.6	2,026.8	2,022.3	2,016.2
2017		1,974.6	2,033.5	2,019.9	2,043.9	2,038.8	2,030.9
2018		1,986.8	2,047.0	2,032.2	2,061.1	2,055.7	2,045.9
2019		1,999.0	2,060.1	2,044.0	2,078.5	2,072.9	2,061.0
2020		2,011.3	2,073.1	2,055.7	2,095.9	2,090.3	2,052.3
2021		2,023.5	2,085.8	2,067.4	2,113.5	2,108.0	2,091.5
2022		2,035.4		2,078.6	2,131.1	2,125.8	2,106.9
2023		2,047.2		2,090.0	2,148.6	2,143.7	2,122.4
2024		2,059.1		2,101.2	2,166.1	2,161.6	2,138.1
2025		2,070.7		2,112.5	2,183.6	2,179.5	2,153.9
2026		2,082.1		2,123.1	2,201.0	2,197.4	2,169.8
2027		2,093.4		2,134.1	2,218.3	2,215.3	2,185.8
2028		2,104.6		2,144.5	2,235.7	2,233.2	2,201.9
2029		2,115.3		2,155.1	2,253.0	2,251.1	2,217.9
2030		2,125.8		2,165.4	2,270.2	2,268.9	2,234.0
2031		2,136.3		2,175.4	2,287.4	2,286.6	2,250.2



Net Migration (k)

No UPC	Capacity	ONS MYE	ONS 2008	ONS 2011	ONS 2012	2007-12 Trends	2001-11 T No UPC	Capacity	No UPC	Capacity
1811756	1811756	3.9							3857	3857
1821017	1821017	5.5							5459	5459
1832318	1832318	2.6							2619	2619
1841905	1841905	8.7							8687	8687
1858360	1858360	2.9							2921	2921
1869638	1869638	4.5							4527	4527
1883635	1883635	6.0							5993	5993
1900215	1900215	3.6	0.2						3587	3587
1914895	1914895	3.6	0.3						3560	3560
1929306	1929306	5.5	0.1						5501	5501
1946483	1946483	1.7	-0.1	1.5					1687	1687
1960207	1960207		-0.1	1.1	0.2	4.1	2.6	1.2	1192	-7522
1973575	1964782		-0.3	0.8	-0.1	4.0	2.6	1.2	1169	-319
1987447	1977065		-0.6	0.6	-0.1	4.0	2.7	1.2	1228	-775
2001651	1989135		-0.7	0.3	0.3	3.9	2.7	1.3	1265	-1016
2016155	2001195		-0.7	0.0	-0.1	3.9	2.9	1.3	1261	-508
2030907	2013987		-0.9	-0.1	0.1	4.0	3.0	1.3	1267	-693
2045867	2026763		-0.8	-0.2	-0.3	4.0	3.1	1.3	1279	-820
2060981	2039523		-0.9	-0.4	-0.5	4.1	3.2	1.3	1298	-897
2076206	2052267		-1.0	-0.5	-0.4	4.2	3.4	1.3	1317	-934
2091502	2064995		-0.9		-0.4	4.3	3.5	1.5	1467	-1770
2106897	2076798		-0.9		-0.4	4.2	3.4	1.6	1598	-1790
2122435	2088552		-0.9		-0.6	4.2	3.5	1.8	1764	-1975
2138126	2100068		-0.9		-0.3	4.2	3.5	1.9	1931	-1940
2153939	2111537		-0.8		-0.2	4.2	3.5	2.1	2089	-1892
2169847	2122958		-0.7		-0.1	4.2	3.6	2.3	2261	-2418
2185829	2133719		-0.8		-0.2	4.3	3.6	2.4	2425	-2330
2201861	2144423		-1.0		-0.1	4.3	3.7	2.6	2571	-2321
2217915	2154985		-1.2		0.0	4.4	3.8	2.8	2794	-2190
2234025	2165489		-1.4		-0.1	4.5	4.0	3.1	3093	-2037
2250241	2175935									



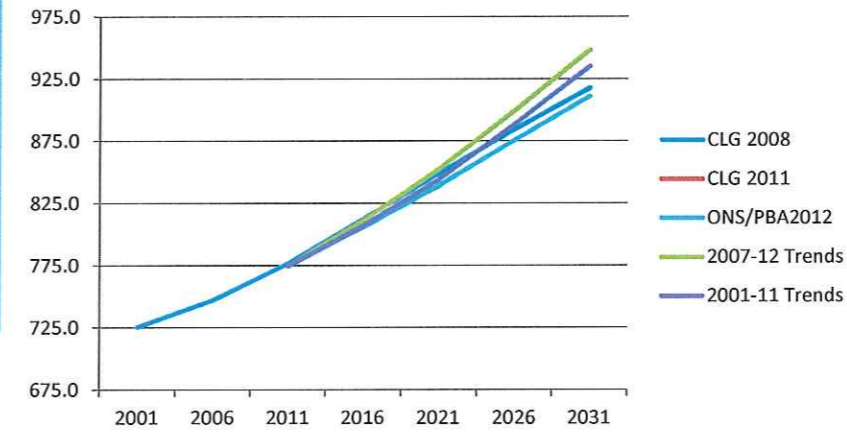


Natural Change (k)

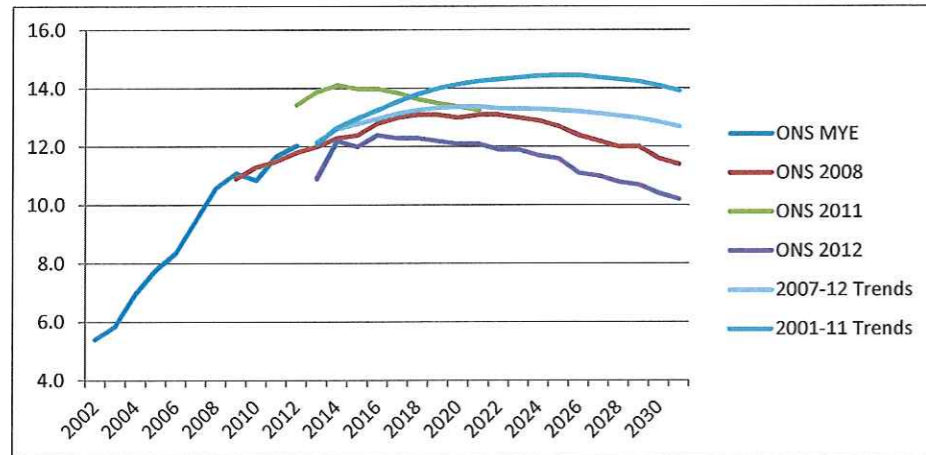
	ONS MYE	ONS 2008	ONS 2011	ONS 2012	2007-12 Trends	2001-11 T No UPC	Capacity
2002	5.4						
2003	5.8						
2004	7.0						
2005	7.8						
2006	8.4						
2007	9.5						
2008	10.6						
2009	11.1	10.9					
2010	10.9	11.3					
2011	11.7	11.5					
2012	12.0	11.8	13.4				
2013		12.0	13.9	10.9	12.2	12.1	12.2
2014		12.3	14.1	12.2	12.6	12.7	12.6
2015		12.4	14.0	12.0	12.8	13.0	12.8
2016		12.8	14.0	12.4	13.0	13.3	13.2
2017		13.0	13.8	12.3	13.1	13.6	13.5
2018		13.1	13.6	12.3	13.3	13.8	13.7
2019		13.1	13.5	12.2	13.3	14.0	13.8
2020		13.0	13.4	12.1	13.4	14.1	13.9
2021		13.1	13.2	12.1	13.4	14.3	14.0
2022		13.1		11.9	13.3	14.3	13.9
2023		13.0		11.9	13.3	14.4	13.9
2024		12.9		11.7	13.3	14.4	13.9
2025		12.7		11.6	13.3	14.4	13.9
2026		12.4		11.1	13.2	14.4	13.8
2027		12.2		11.0	13.1	14.4	13.7
2028		12.0		10.8	13.1	14.3	13.6
2029		12.0		10.7	13.0	14.2	13.5
2030		11.6		10.4	12.8	14.1	13.3
2031		11.4		10.2	12.7	13.9	13.1

Households (k)

	No UPC	Capacity	CLG 2008	CLG 2011	ONS/PBA2012	2007-12 Trends	2001-11 Trends	2001-11 High	2001-11 Low	No UPC	Capacity
2001	5404	5404	725.6								
2006	5842	5842	747.2								
2011	6968	6968	776.7	774.6	774.5	774.6	774.6	774.6	774.6	774.6	774.6
2016	7768	7768	812.4	806.7	805.9	811.4	807.1	807.0	807.0	804.4	798.1
2021	8357	8357	849.2	839.1	839.4	852.5	844.4	843.6	843.6	837.0	825.9
2026	9470	9470	884.5		876.2	899.6	888.9	917.4	880.6	875.6	855.9
2031	10587	10587	917.8		911.1	948.4	935.1	964.5	919.9	917.2	885.7
2009	11093	11093									
2010	10851	10851									
2011	11676	11676	725,627								
2012	12037	12037	747,226								
2013	12175	12097	776,744	774,573	774,520	774,520	774,520	774,560	774,560	774,560	774,560
2014	12703	12601	812,418	806,706	805,872	811,424	807,113	806,982	806,982	804,363	798,140
2015	12976	12846	849,201	839,129	839,413	852,492	844,352	843,551	843,551	837,001	825,949
2016	13239	13075	884,539		876,178	899,630	888,941	917,406	880,558	875,632	855,896
2017	13492	13300	917,792		911,107	948,423	935,126	964,452	919,882	917,249	885,691
2018	13692	13469									
2019	13835	13580									
2020	13927	13641									
2021	13979	13662									
2022	13928	13572									
2023	13940	13544									
2024	13927	13491									
2025	13881	13408									
2026	13820	13314									
2027	13721	13179									
2028	13607	13034									
2029	13483	12883									
2030	13316	12694									
2031	13123	12482									
<b>Annual Averages</b>											
2011-31			7052		6829	8695	8030	9495	7266	7134	5557

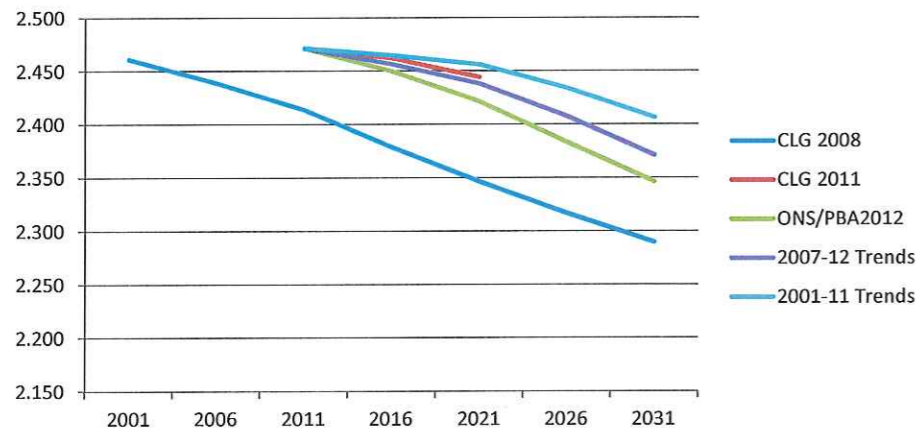


Total Change	2011-31	141.0	136.6	173.8	160.6
--------------	---------	-------	-------	-------	-------



Average Household Size

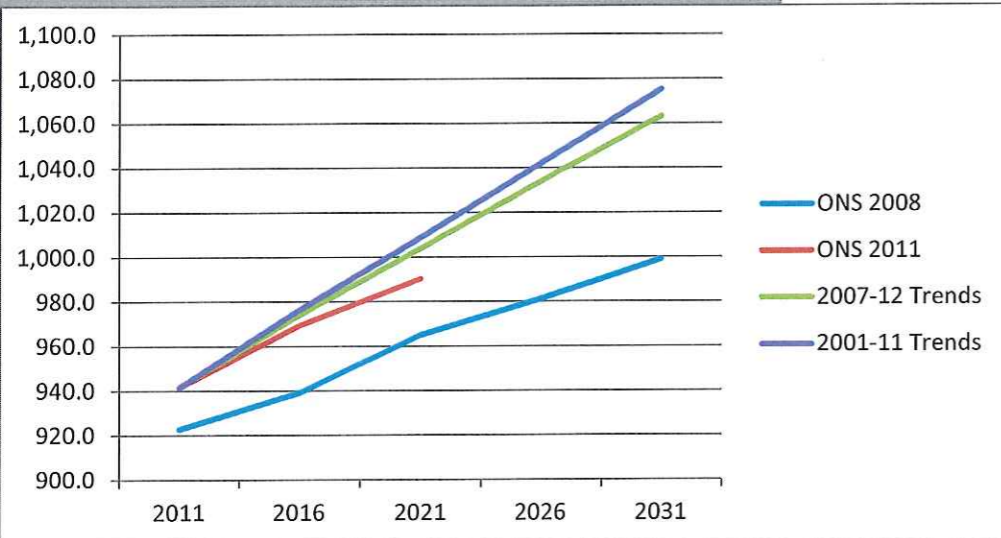
	CLG 2008	CLG 2011	ONS/PBA2012	2007-12 Trends	2001-11 Trends	2001-11 High	2001-11 Low	No UPC	Capacity	ONS/CLG 2008	ONS 2010	ONS/CLG 2011	ONS/PBA 2012	2007-12 Trends	2001-11 Trends	2001-11 High	2001-11 Low	No UPC	Capacity
<b>2001</b>	2.461																		
<b>2006</b>	2.439																		
<b>2011</b>	2.414	2.471	2.471	2.471	2.471	2.471	2.471	2.471	2.471	1,811.8									
<b>2016</b>	2.379	2.462	2.450	2.457	2.465	2.465	2.465	2.466	2.466	1,903.4	#REF!	1,946.5	1,946.5	1,946.5	1,946.5	1,946.5	1,946.5	1,946.5	1,946.5
<b>2021</b>	2.347	2.444	2.422	2.438	2.457	2.459	2.459	2.459	2.460	1,962.3	#REF!	2,019.8	2,007.6	2,026.8	2,022.3	2,022.3	2,022.3	2,016.2	2,001.2
<b>2026</b>	2.317		2.384	2.408	2.434	2.356	2.455	2.438	2.440	2,023.5	#REF!	2,085.8	2,067.4	2,113.5	2,108.0	2,108.0	2,108.0	2,091.5	2,065.0
<b>2031</b>	2.290		2.346	2.371	2.407	2.331	2.444	2.412	2.415	2,082.1	#REF!		2,123.1	2,201.0	2,197.4	2,197.4	2,197.4	2,169.8	2,123.0
										2,136.3	#REF!		2,175.4	2,287.4	2,286.6	2,286.6	2,286.6	2,250.2	2,175.9
<b>Households</b>																			
<b>2001</b>										725.6									
<b>2011</b>										776.7		774.6	774.6	774.6	774.6	774.6	774.6	774.6	774.6
<b>2016</b>										812.4		806.7	805.9	811.4	807.1	807.0	807.0	804.4	798.1
<b>2021</b>										849.2		839.1	839.4	852.5	844.4	843.6	843.6	837.0	825.9
<b>2026</b>										884.5			876.2	899.6	888.9	917.4	880.6	875.6	855.9
<b>2031</b>										917.8			911.1	948.4	935.1	964.5	919.9	917.2	885.7
<b>2001-11</b>										51.1		48.9	48.9	48.9	48.9	48.9	48.9	48.9	48.9
<b>2011-31</b>										141.0			136.5	173.8	160.6	189.9	145.3	142.7	111.1
<b>pa</b>										7052			6,827	8,692	8,028	9,494	7,265	7,134	5,556
<b>Average Household Size</b>																			
<b>2001</b>	2.461																		
<b>2011</b>	2.414	2.471	2.471	2.471	2.471	2.471	2.471	2.471	2.471							2.471	2.471	2.471	2.471
<b>2016</b>	2.379	2.462	2.450	2.457	2.465	2.465	2.465	2.466	2.466							2.465	2.465	2.466	2.466
<b>2021</b>	2.347	2.444	2.422	2.438	2.457	2.459	2.459	2.459	2.460							2.459	2.459	2.459	2.460
<b>2026</b>	2.317		2.384	2.408	2.434	2.356	2.455	2.438	2.440							2.356	2.455	2.438	2.440
<b>2031</b>	2.290		2.346	2.371	2.407	2.331	2.444	2.412	2.415							2.331	2.444	2.412	2.415





**Resident Labour Force**

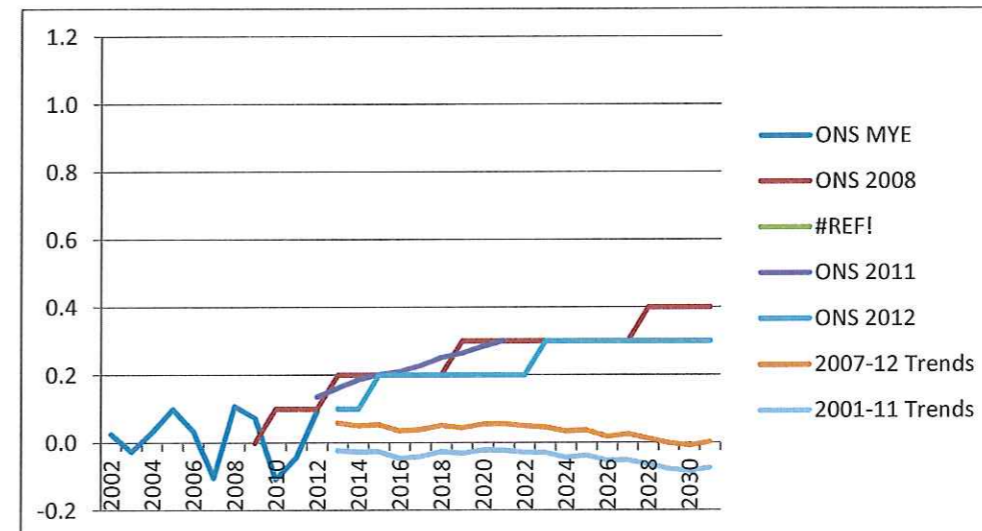
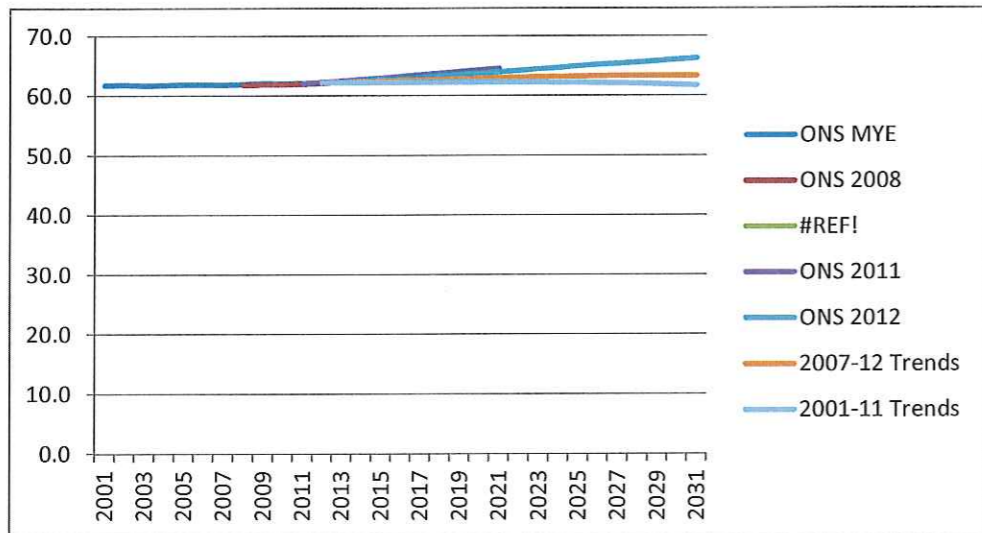
	ONS 2008	ONS 2011	2007-12 Trends	2001-11 Trends
<b>2011</b>	922.8	941.5	941.5	941.5
<b>2016</b>	939.1	969.2	974.2	976.3
<b>2021</b>	965.0	990.3	1,003.8	1,008.8
<b>2026</b>	981.1		1,034.0	1,042.1
<b>2031</b>	999.0		1,063.2	1,075.2
<b>2011-21</b>	42.2	48.8	62.3	
<b>2021-31</b>	34.0		59.4	
<b>2011-31</b>	76.2		121.7	



Population (k)

Net Migration (k)

	ONS MYE	ONS 2008	ONS 2011	ONS 2012	2007-12 Trends	2001-11 Trends	2007-12	2007-12	ONS MYE	ONS 2008	ONS 2011	ONS 2012	2007-12 Trends	2001-11 Trends	2007-12	2007-12
2001	61.8						61,788	61788	2002	0.0					26	26
2002	61.8						61,825	61825	2003	0.0					-26	-26
2003	61.7						61,749	61749	2004	0.0					31	31
2004	61.8						61,769	61769	2005	0.1					99	99
2005	61.9						61,894	61894	2006	0.0					35	35
2006	61.9						61,920	61920	2007	-0.1					-103	-103
2007	61.8						61,839	61839	2008	0.1					108	108
2008	62.0	61.8					61,968	61968	2009	0.1	0.0				73	73
2009	62.1	61.9					62,124	62124	2010	-0.1	0.1				-108	-108
2010	62.1	61.9					62,066	62066	2011	0.0	0.1				-43	-43
2011	62.1	62.0	62.1				62,089	62089	2012	0.1	0.1	0.1			92	92
2012	62.2	62.1	62.3	62.2	62.2	62.2	62,200	62200	2013		0.2	0.2	0.1	0.1	59	-23
2013		62.3	62.5	62.3	62.3	62.2	62300	62218	2014		0.2	0.2	0.1	0.1	51	-26
2014		62.4	62.7	62.5	62.4	62.2	62398	62239	2015		0.2	0.2	0.2	0.1	54	-26
2015		62.6	63.0	62.7	62.5	62.3	62491	62251	2016		0.2	0.2	0.2	0.0	36	-45
2016		62.8	63.2	62.8	62.6	62.2	62571	62249	2017		0.2	0.2	0.2	0.0	39	-40
2017		63.0	63.5	63.0	62.7	62.3	62653	62251	2018		0.2	0.3	0.2	0.1	51	-26
2018		63.2	63.8	63.3	62.7	62.3	62745	62264	2019		0.3	0.3	0.2	0.0	45	-30
2019		63.5	64.0	63.5	62.8	62.3	62829	62269	2020		0.3	0.3	0.2	0.1	55	-21
2020		63.7	64.3	63.7	62.9	62.3	62919	62279	2021		0.3	0.3	0.2	0.1	57	-23
2021		64.0	64.6	64.0	63.0	62.3	63007	62283	2022		0.3		0.2	0.1	50	-28
2022		64.2		64.2	63.1	62.3	63081	62274	2023		0.3		0.3	0.0	46	-29
2023		64.5		64.5	63.1	62.3	63148	62259	2024		0.3		0.3	0.0	35	-43
2024		64.7		64.7	63.2	62.2	63205	62231	2025		0.3		0.3	0.0	37	-37
2025		65.0		65.0	63.3	62.2	63260	62202	2026		0.3		0.3	0.0	18	-52
2026		65.2		65.2	63.3	62.2	63295	62155	2027		0.3		0.3	0.0	26	-51
2027		65.4		65.4	63.3	62.1	63331	62103	2028		0.4		0.3	0.0	13	-63
2028		65.6		65.6	63.4	62.0	63354	62037	2029		0.4		0.3	0.0	0	-77
2029		65.8		65.8	63.4	61.9	63357	61950	2030		0.4		0.3	0.0	-8	-83
2030		66.1		66.1	63.4	61.9	63352	61854	2031		0.4		0.3	0.0	2	-75
2031		66.3		66.3	63.4	61.8	63351	61760								





Natural Change (k)

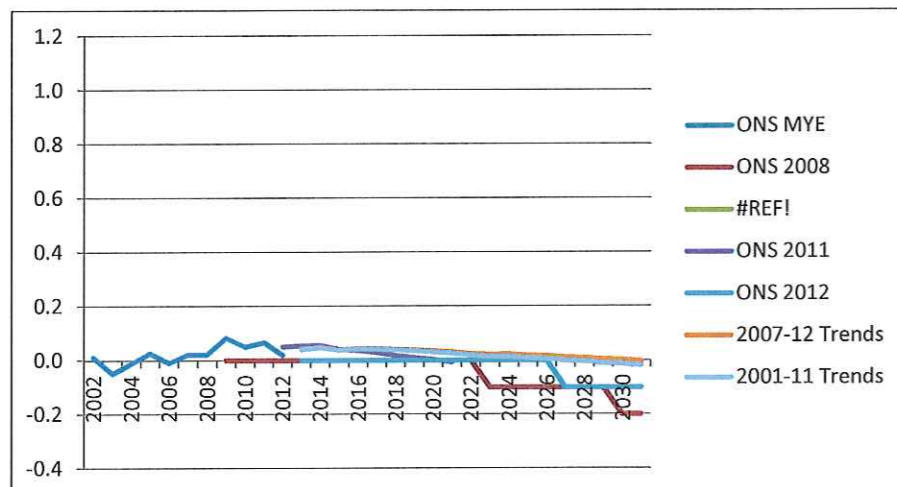
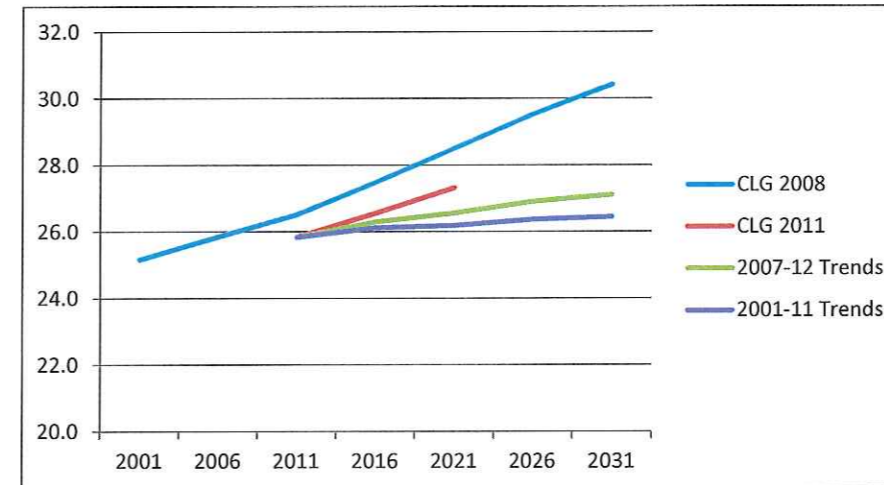
	ONS MYE	ONS 2008	ONS 2011	ONS 2012	2007-12 Trends	2001-11 Trends
2002	0.0					
2003	-0.1					
2004	0.0					
2005	0.0					
2006	0.0					
2007	0.0					
2008	0.0					
2009	0.1	0.0				
2010	0.1	0.0				
2011	0.1	0.0				
2012	0.0	0.0	0.0			
2013		0.0	0.1	0.0	0.0	0.0
2014		0.0	0.1	0.0	0.0	0.0
2015		0.0	0.0	0.0	0.0	0.0
2016		0.0	0.0	0.0	0.0	0.0
2017		0.0	0.0	0.0	0.0	0.0
2018		0.0	0.0	0.0	0.0	0.0
2019		0.0	0.0	0.0	0.0	0.0
2020		0.0	0.0	0.0	0.0	0.0
2021		0.0	0.0	0.0	0.0	0.0
2022		0.0		0.0	0.0	0.0
2023		-0.1		0.0	0.0	0.0
2024		-0.1		0.0	0.0	0.0
2025		-0.1		0.0	0.0	0.0
2026		-0.1		0.0	0.0	0.0
2027		-0.1		-0.1	0.0	0.0
2028		-0.1		-0.1	0.0	0.0
2029		-0.1		-0.1	0.0	0.0
2030		-0.2		-0.1	0.0	0.0
2031		-0.2		-0.1	0.0	0.0

Households (k)

	2007-12	2001-11 Trends	CLG 2008	CLG 2011	2007-12 Trends	2001-11 Trends
2007	22	22				
2008	21	21				
2009	83	83				
2010	50	50				
2011	66	66	25169			
2012	19	19	25857			
2013	41	41	26518	25838	25837	25837
2014	48	47	27487	26563	26305	26125
2015	39	38	28520	27329	26568	26195
2016	44	43	29535		26913	26381
2017	43	41	30424		27120	26454
2018	41	39	Annual Averages			
2019	38	35	2011-31	195	64	31
2020	35	31				
2021	31	27				
2022	24	19				
2023	21	15				
2024	22	14				
2025	17	8				
2026	16	6				
2027	11	-1				
2028	10	-3				
2029	4	-10				
2030	3	-13				
2031	-3	-19				

Average Household Size

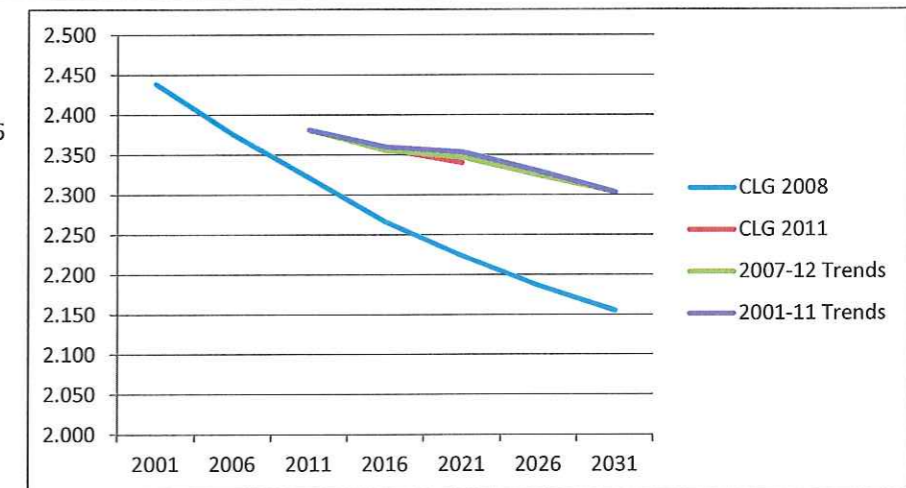
	CLG 2008	CLG 2011	2007-12 Trends	2001-11 Trends
2001	2.439			
2006	2.376			
2011	2.321	2.381	2.381	2.381
2016	2.267	2.358	2.356	2.360
2021	2.224	2.340	2.347	2.354
2026	2.186		2.325	2.330
2031	2.155		2.304	2.303



Total Change  
2011-31 3.9

1.3

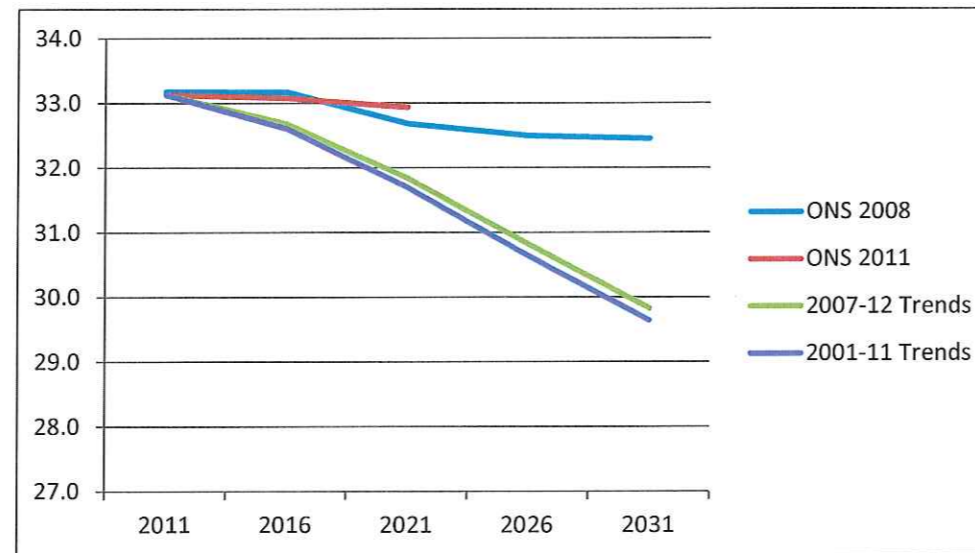
0.6



**Resident Labour Force**

	ONS/CLG 2008	ONS/CLG 2011	2007-12 Trends	2001-11 Trends
<b>Population</b>				
2001	61.8			
2006				
2011	62.0	62.1	62.1	62.1
2016	62.8	63.2	62.6	62.2
2021	64.0	64.6	63.0	62.3
2026	65.2		63.3	62.2
2031	66.3		63.4	61.8
<b>Households</b>				
2001	25.2			
2006	25.9			
2011	26.5	25.8	25.8	25.8
2016	27.5	26.6	26.3	26.1
2021	28.5	27.3	26.6	26.2
2026	29.5		26.9	26.4
2031	30.4		27.1	26.5
2001-11	1.3	0.7	0.7	0.7
2011-21	2.0	1.5	0.7	0.4
2021-31	1.9		0.6	0.3
<b>Average Household Size</b>				
2001	2.439			
2006	2.376			
2011	2.321	2.381	2.381	2.381
2016	2.267	2.358	2.356	2.360
2021	2.224	2.340	2.347	2.354
2026	2.186		2.325	2.330
2031	2.155		2.304	2.303

	ONS 2008	ONS 2011	2007-12 Tr	2001-11 Trends
2011	33.2	33.1	33.1	33.1
2016	33.2	33.1	32.7	32.6
2021	32.7	32.9	31.8	31.7
2026	32.5		30.8	30.6
2031	32.5		29.8	29.6
	33177	33184		
	33169	33079		
	32683	32936		
	32496			
	32453			



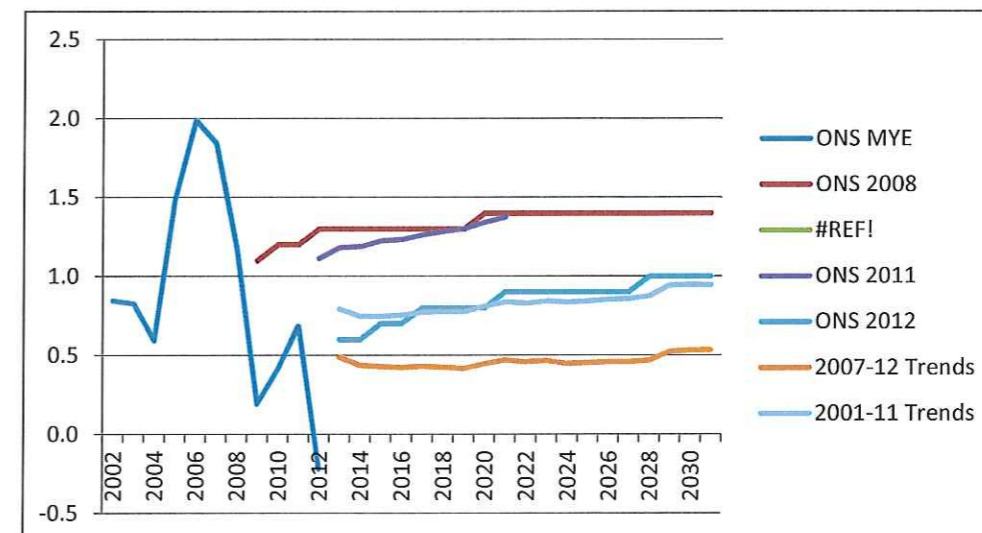
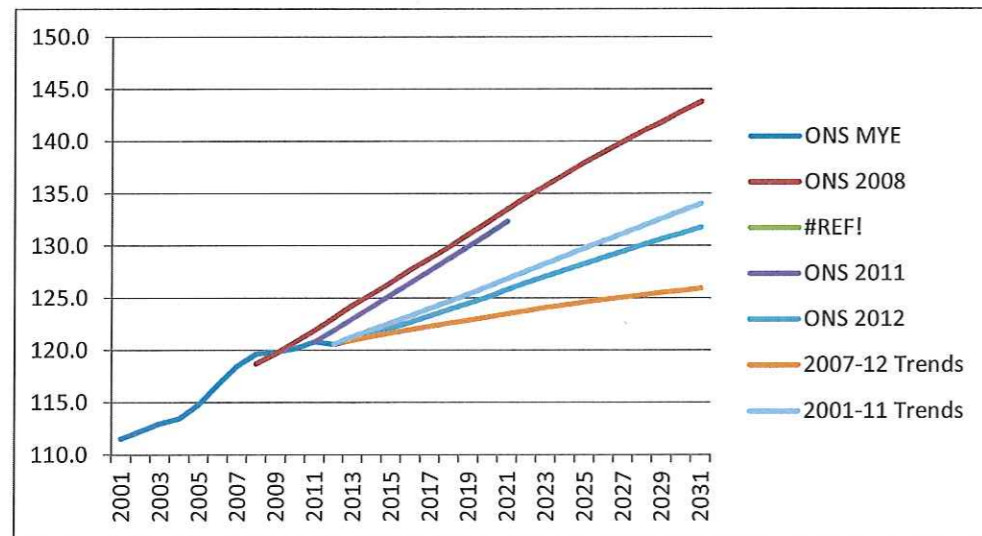


Population (k)

	ONS MYE	ONS 2008	ONS 2011	ONS 2012	2007-12 Trends	2001-11 Trends	2007-12
2001	111.6						111,551
2002	112.3						112,258
2003	113.0						112,992
2004	113.5						113,483
2005	114.8						114,823
2006	116.7						116,708
2007	118.5						118,478
2008	119.7	118.7					119,666
2009	119.8	119.7					119,826
2010	120.2	120.8					120,191
2011	120.8	121.9	120.8				120,824
2012	120.6	123.1	121.9	120.6	120.6	120.6	120,578
2013		124.3	123.0	121.0	121.0	121.3	120,987
2014		125.4	124.2	121.5	121.3	122.0	121,341
2015		126.5	125.3	122.1	121.7	122.6	121,672
2016		127.7	126.5	122.7	122.0	123.3	121,979
2017		128.8	127.6	123.3	122.3	124.0	122,290
2018		129.9	128.8	123.9	122.6	124.7	122,591
2019		131.1	129.9	124.5	122.9	125.4	122,874
2020		132.3	131.1	125.1	123.2	126.1	123,176
2021		133.5	132.3	125.8	123.5	126.8	123,489
2022		134.7		126.5	123.8	127.6	123,793
2023		135.8		127.1	124.1	128.3	124,087
2024		136.9		127.7	124.4	129.1	124,359
2025		138.0		128.3	124.6	129.8	124,613
2026		139.0		128.9	124.9	130.5	124,853
2027		140.0		129.5	125.1	131.2	125,070
2028		141.0		130.1	125.3	131.9	125,289
2029		141.9		130.7	125.5	132.6	125,527
2030		142.9		131.2	125.7	133.3	125,738
2031		143.8		131.8	125.9	134.0	125,941

Net Migration (k)

	ONS MYE	ONS 2008	ONS 2011	ONS 2012	2007-12 Trends	2001-11 Trends	2007-12
2002	0.8						847
2003	0.8						829
2004	0.6						594
2005	1.5						1,482
2006	2.0						1,986
2007	1.8						1,844
2008	1.2						1,171
2009	0.2	1.1					194
2010	0.4	1.2					412
2011	0.7	1.2					685
2012	-0.2	1.3	1.1				-220
2013		1.3	1.2	0.6	0.5	0.8	490
2014		1.3	1.2	0.6	0.4	0.7	437
2015		1.3	1.2	0.7	0.4	0.7	429
2016		1.3	1.2	0.7	0.4	0.8	422
2017		1.3	1.3	0.8	0.4	0.8	431
2018		1.3	1.3	0.8	0.4	0.8	424
2019		1.3	1.3	0.8	0.4	0.8	417
2020		1.4	1.3	0.8	0.4	0.8	447
2021		1.4	1.4	0.9	0.5	0.8	472
2022		1.4		0.9	0.5	0.8	458
2023		1.4		0.9	0.5	0.8	468
2024		1.4		0.9	0.4	0.8	449
2025		1.4		0.9	0.5	0.8	452
2026		1.4		0.9	0.5	0.9	460
2027		1.4		0.9	0.5	0.9	460
2028		1.4		1.0	0.5	0.9	469
2029		1.4		1.0	0.5	0.9	524
2030		1.4		1.0	0.5	0.9	533
2031		1.4		1.0	0.5	0.9	533

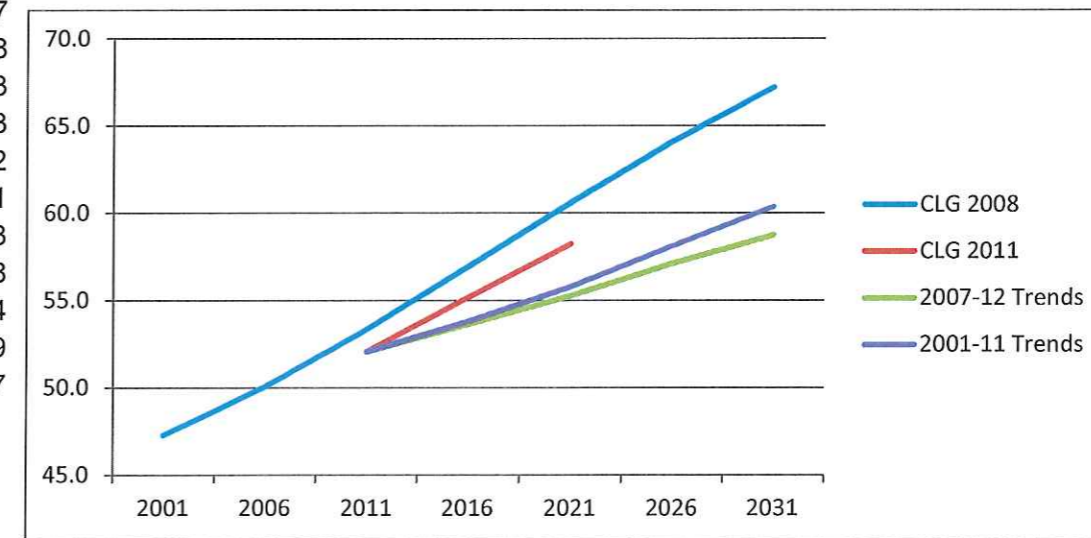


Natural Change (k)

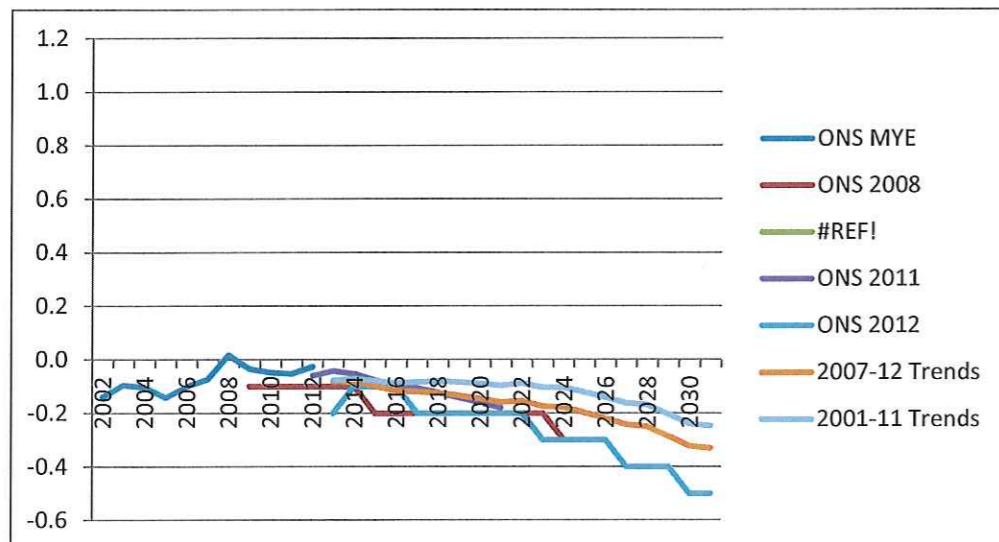
	ONS MYE	ONS 2008	ONS 2011	ONS 2012	2007-12 Trends	2001-11 Trends	2007-12
2002	-0.1						-140
2003	-0.1						-95
2004	-0.1						-103
2005	-0.1						-142
2006	-0.1						-101
2007	-0.1						-74
2008	0.0						17
2009	0.0	-0.1					-34
2010	0.0	-0.1					-47
2011	-0.1	-0.1					-52
2012	0.0	-0.1	-0.1				-26
2013		-0.1	0.0	-0.2	-0.1	-0.1	-81
2014		-0.1	-0.1	-0.1	-0.1	-0.1	-83
2015		-0.2	-0.1	-0.1	-0.1	-0.1	-99
2016		-0.2	-0.1	-0.1	-0.1	-0.1	-115
2017		-0.2	-0.1	-0.2	-0.1	-0.1	-120
2018		-0.2	-0.1	-0.2	-0.1	-0.1	-124
2019		-0.2	-0.1	-0.2	-0.1	-0.1	-134
2020		-0.2	-0.2	-0.2	-0.1	-0.1	-145
2021		-0.2	-0.2	-0.2	-0.2	-0.1	-158
2022		-0.2		-0.2	-0.2	-0.1	-154
2023		-0.2		-0.3	-0.2	-0.1	-174
2024		-0.3		-0.3	-0.2	-0.1	-177
2025		-0.3		-0.3	-0.2	-0.1	-198
2026		-0.3		-0.3	-0.2	-0.1	-220
2027		-0.4		-0.4	-0.2	-0.2	-243
2028		-0.4		-0.4	-0.2	-0.2	-250
2029		-0.4		-0.4	-0.3	-0.2	-286
2030		-0.5		-0.5	-0.3	-0.2	-322
2031		-0.5		-0.5	-0.3	-0.2	-331

Households (k)

	CLG 2008	CLG 2011	2007-12 Trends	2001-11 Trends
2001	47.3			
2006	50.1			
2011	53.3	52.1	52.1	52.1
2016	57.0	55.2	53.6	53.8
2021	60.6	58.2	55.3	55.8
2026	64.1		57.1	58.1
2031	67.2		58.7	60.4
2001	47272			
2006	50061			
2011	53344	52065	52061	52061
2016	56954	55183	53640	53794
2021	60619	58234	55269	55782
2026	64109		57109	58124
2031	67216		58745	60375
Annual Averages				
2011-31	694		334	416



Total Change	2011-31	6.7	8.3
2011-31	13.9		



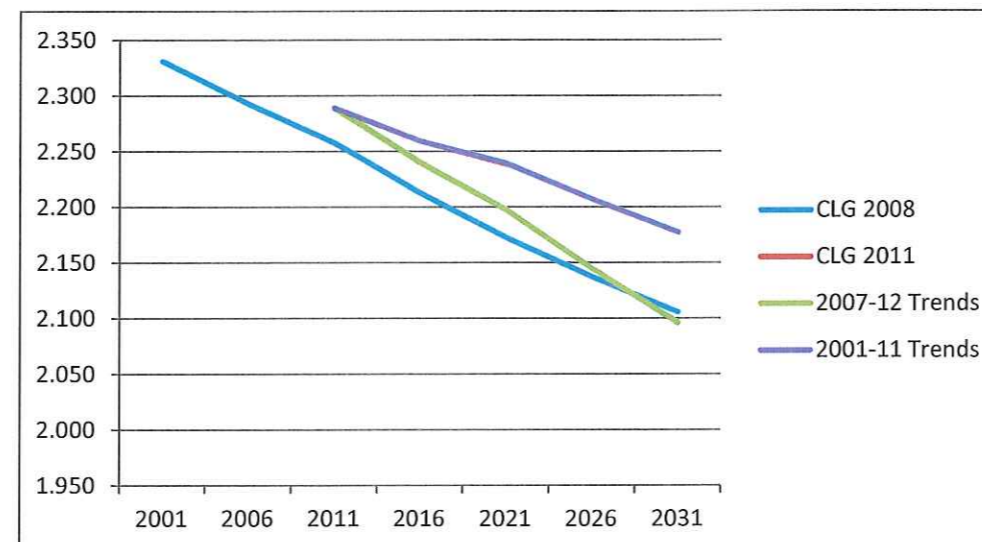
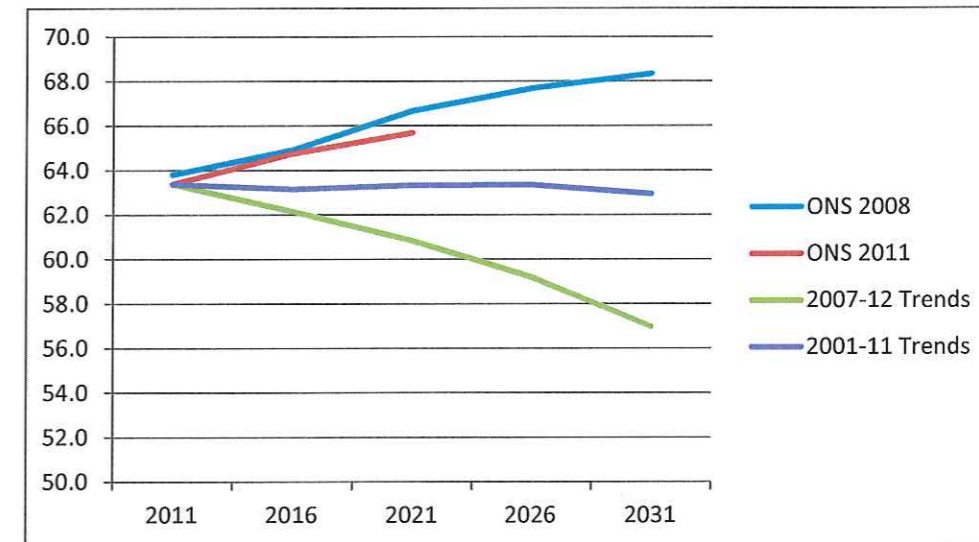


**Average Household Size**

	CLG 2008	CLG 2011	2007-12 Trends	2001-11 Trends	ONS/CLG 2008	ONS/CLG 2011	2007-12 Trends	2001-11 Trends
<b>2001</b>	2.331							
<b>2006</b>	2.293							
<b>2011</b>	2.258	2.289	2.289	2.289				
<b>2016</b>	2.213	2.259	2.240	2.259				
<b>2021</b>	2.173	2.239	2.198	2.239				
<b>2026</b>	2.137		2.145	2.207				
<b>2031</b>	2.105		2.096	2.177				
<b>Population</b>								
<b>2001</b>					111.6			
<b>2006</b>								
<b>2011</b>					121.9	120.8	120.8	120.8
<b>2016</b>					127.7	126.5	122.0	123.3
<b>2021</b>					133.5	132.3	123.5	126.8
<b>2026</b>					139.0		124.9	130.5
<b>2031</b>					143.8		125.9	134.0
<b>Households</b>								
<b>2001</b>					47.3			
<b>2006</b>					50.1			
<b>2011</b>					53.3	52.1	52.1	52.1
<b>2016</b>					57.0	55.2	53.6	53.8
<b>2021</b>					60.6	58.2	55.3	55.8
<b>2026</b>					64.1		57.1	58.1
<b>2031</b>					67.2		58.7	60.4
<b>2001-11</b>					6.1	4.8	4.8	4.8
<b>2011-21</b>					7.3	6.2	3.2	3.7
<b>2021-31</b>					6.6		3.5	4.6
<b>Average Household Size</b>								
<b>2001</b>	2.331							
<b>2006</b>	2.293							
<b>2011</b>	2.258	2.289	2.289	2.289				
<b>2016</b>	2.213	2.259	2.240	2.259				
<b>2021</b>	2.173	2.239	2.198	2.239				
<b>2026</b>	2.137		2.145	2.207				
<b>2031</b>	2.105		2.096	2.177				

**Resident Labour Force**

	ONS 2008	ONS 2011	2007-12 Trends	2001-11 Trends
<b>2011</b>	63.8	63.4	63.4	63.4
<b>2016</b>	64.9	64.8	62.2	63.2
<b>2021</b>	66.7	65.7	60.8	63.3
<b>2026</b>	67.7		59.2	63.3
<b>2031</b>	68.3		57.0	62.9
	63801	63510		
	64925	64757		
	66672	65688		
	67677			
	68348			





Birmingham		Start Population Estimate	Births	Deaths	Natural Change	Internal In	Internal Out	Internal Net	International In	International Out	International Net	Asylum Seekers Net	Prisoners	AF	Other unattributable	Oadby & Wigston adjustment	Migration & Other	End Population Estimate	Births	Deaths	Natural Change	Migration UK Net	Migration Overseas Net	Other	Migration & Other	Total Change				
2001	2002	984,642	14,546	9,774	4,772	33,498	42,035	-8,537	11,286	6,788	4,498	2,765	-62	-40	2,346	0	970	990,384	-4,039	2001	2002	14,546	9,774	4,772	-8,537	7,263	2,244	970	5,742	
2002	2003	990,384	15,078	9,869	5,209	33,899	43,380	-9,481	11,863	6,488	5,375	2,513	-41	-1	2,401	-3	763	996,356	-4,106	2002	2003	15,078	9,869	5,209	-9,481	7,888	2,356	763	5,972	
2003	2004	996,356	15,501	9,667	5,834	33,041	43,987	-10,946	15,044	7,617	7,427	1,148	184	-114	2,490	-3	186	1,002,376	-3,519	2003	2004	15,501	9,667	5,834	-10,946	8,575	2,557	186	6,020	
2004	2005	1,002,376	15,815	9,250	6,565	35,654	42,595	-6,941	14,556	5,098	9,458	667	10	-36	2,556	-5	5,709	1,014,650	2,517	2004	2005	15,815	9,250	6,565	-6,941	10,125	2,525	5,709	12,274	
2005	2006	1,014,650	16,062	9,116	6,946	36,145	43,787	-7,642	10,905	7,059	3,846	339	-16	13	2,715	-8	-753	1,020,843	-3,796	2005	2006	16,062	9,116	6,946	-7,642	4,185	2,704	-753	6,193	
2006	2007	1,020,843	16,540	8,963	7,577	36,720	45,126	-8,406	13,205	7,407	5,798	461	-1	7	2,750	-8	601	1,029,021	-2,608	2006	2007	16,540	8,963	7,577	-8,406	6,259	2,748	601	8,178	
2007	2008	1,029,021	17,174	8,672	8,502	37,012	45,274	-8,262	11,062	4,619	6,443	605	-41	26	2,695	-9	1,457	1,038,980	-1,819	2007	2008	17,174	8,672	8,502	-8,262	7,048	2,671	1,457	9,959	
2008	2009	1,038,980	17,470	8,421	9,049	36,356	43,444	-5,088	11,842	8,147	3,695	867	-66	5	2,638	-8	2,043	1,050,072	-1,393	2008	2009	17,470	8,421	9,049	-5,088	4,562	2,569	2,043	11,092	
2009	2010	1,050,072	17,055	8,288	8,767	38,253	44,885	-6,632	12,365	6,505	5,860	517	-26	8	2,509	-1	2,235	1,061,074	-772	2009	2010	17,055	8,288	8,767	-6,632	6,377	2,490	2,235	11,002	
2010	2011	1,061,074	17,479	8,107	9,372	38,041	43,555	-5,514	15,323	8,317	7,006	531	-6	2	1,818	0	3,837	1,074,283	1,492	2010	2011	17,479	8,107	9,372	-5,514	7,537	1,814	3,837	13,209	
2011	2012	1,074,283	17,636	8,028	9,608	42,338	45,503	-3,165	11,710	7,002	4,708				-17		1,526	1,085,417		2011	2012	17,636	8,028	9,608	-3,165	4,708	-17	1,526	11,134	
Annual Average 2001-11						36,062	43,807	-7,745	12,745	6,805	5,941	1,041	-7	-13	2,267	-5	1,705		Annual Averages 2001-11						7,259	-7,745	6,982	2,468	1,705	8,964
		Start Population Estimate	Births	Deaths	Natural Change	Internal In	Internal Out	Internal Net	International In	International Out	International Net				Other changes		Migration and other changes	End Population Estimate				2002-12	2007-12							
2011	2012	1,074,283	17,636	8,028	9,608	42,338	45,503	-3,165	11,710	7,002	4,708				-17		1,526	1,085,417				9,060	-5,732	6,046	1,905	2,220	11,279			

Bromsgrove		Start Population Estimate	Births	Deaths	Natural Change	Internal In	Internal Out	Internal Net	International In	International Out	International Net	Asylum Seekers Net	Prisoners	AF	Other unattributable	Oadby & Wigston adjustment	Migration & Other	End Population Estimate	Births	Deaths	Natural Change	Migration UK Net	Migration Overseas Net	Other	Migration & Other	Total Change				
2001	2002	87,904	806	946	-140	5,167	4,060	1,107	158	74	84	-30	97	0	-1	0	1,257	89,021	2001	2002	806	946	-140	1,107	54	96	1,257	1,117		
2002	2003	89,021	819	995	-176	5,146	4,083	1,063	173	90	83	0	-8	0	2	-1	1,139	89,984	2002	2003	819	995	-176	1,063	83	-7	1,139	963		
2003	2004	89,984	897	1,036	-139	4,775	4,006	769	128	129	-1	1	-76	0	-19	-3	671	90,516	2003	2004	897	1,036	-139	769	0	-98	671	532		
2004	2005	90,516	896	992	-96	4,643	4,093	550	134	135	-1	0	98	0	-17	-4	626	91,046	2004	2005	896	992	-96	550	-1	77	626	530		
2005	2006	91,046	862	939	-77	4,766	4,073	693	253	142	111	0	-15	0	-19	-5	765	91,734	2005	2006	862	939	-77	693	111	-39	765	688		
2006	2007	91,734	935	940	-5	4,973	4,272	701	195	178	17	0	127	0	-5	-6	834	92,563	2006	2007	935	940	-5	701	17	116	834	829		
2007	2008	92,563	921	1,001	-80	4,684	4,040	644	192	151	41	2	-25	0	-41	-7	614	93,097	2007	2008	921	1,001	-80	644	43	-73	614	534		
2008	2009	93,097	890	1,021	-131	4,171	3,573	598	200	251	-51	6	-52	0	-18	-5	478	93,444	2008	2009	890	1,021	-131	598	-45	-75	478	347		
2009	2010	93,444	859	947	-88	4,247	4,053	194	165	245	-80	0	60	0	-20	-3	151	93,507	2009	2010	859	947	-88	194	-80	37	151	63		
2010	2011	93,507	884	984	-90	4,431	4,010	421	229	252	-23	0	-40	0	-43	0	315	93,732	2010	2011	884	984	-90	421	-23	-83	315	225		
2011	2012	93,732	916	1,025	-109	4,886	4,144	742	170	126	44				-124		662	94,285	2011	2012	916	1,025	-109	742	44	-124	662	553		
Annual Average 2001-11						4,700	4,026	674	183	165	18	-2	17	0	-18	-3	685		Annual Averages 2001-11						-102	674	16	-5	685	583
		Start Population Estimate	Births	Deaths	Natural Change	Internal In	Internal Out	Internal Net	International In	International Out	International Net				Other changes		Migration and other changes	End Population Estimate				2002-12	2007-12							
2011	2012	93,732	916	1,025	-109	4,886	4,144	742	170	126	44				-124		662	94,285				-99	638	15	-27	626	526			
																						-100	520	-12	-64	444	344			

Cannock Chase		Start Population Estimate	Births	Deaths	Natural Change	Internal In	Internal Out	Internal Net	International In	International Out	International Net	Asylum Seekers Net	Prisoners	AF	Other unattributable	Oadby & Wigston adjustment	Migration & Other	End Population Estimate	Births	Deaths	Natural Change	Migration UK Net	Migration Overseas Net	Other	Migration & Other	Total Change				
2001	2002	92,165	1,048	806	242	3,788	3,305	483	64	94	-30	-30	1	0	169	0	593	93,000	2001	2002	1,048	806	242	483	-60	170	593	835		
2002	2003	93,000	1,039	831	208	3,789	3,415	374	84	78	6	0	-14	0	178	-1	543	93,751	2002	2003	1,039	831	208	374	6	163	543	751		
2003	2004	93,751	1,093	897	196	3,318	3,257	61	70	100	-30	0	12	0	191	-2	232	94,179	2003	2004	1,093	897	196	61	-30	201	232	428		
2004	2005	94,179	1,088	881	207	3,224	3,035	189	95	84	11	0	0	0	187	-1	386	94,772	2004	2005	1,088	881	207	189	11	186	386	593		
2005	2006	94,772	1,154	912	242	3,036	3,265	-229	135	120	15	0	-1	0	195	-3	-23	94,991	2005	2006	1,154	912	242	-229	15	191	-23	219		
2006	2007	94,991	1,155	888	267	3,174	3,197	-23	118	156	-38	1	-10	0	206	-3	133	95,391	2006	2007	1,155	888	267	-23	-37	193	133	400		
2007	2008	95,391	1,122	887	235	3,392	3,287	105	132	91	41	0	0	0	229	-2	373	95,999	2007	2008	1,122	887	235	105	41	229	373	608		
2008	2009	95,999	1,140	826	314	3,229	3,255	-26	85	97	-12	0	2	0	238	-1	201	96,514	2008	2009	1,140	826	314	-26	-12	239	201	515		
2009	2010	96,514	1,142	790	352	3,049	3,270	-221	90	62	28	0	-5	0	231	-1	32	96,898	2009	2010	1,142	790	352	-221	28	225	32	384		
2010	2011	96,898	1,141	807	334	3,381	3,404	-23	166	110	56	0	8	0	309	0	350	97,582	2010	2011	1,141	807	334	-23	56	317	350	684		
2011	2012	97,582	1,127	800	327	3,490	3,490	0	100	51	49				-18		31	97,940	2011	2012	1,127	800	327	0	49	-18	31	358		
Annual Average 2001-11						3,338	3,269	69	104	99	5	-3	-1	0	213	-1	282		Annual Averages 2001-11						260	69	2	211	282	542
		Start Population Estimate	Births	Deaths	Natural Change	Internal In	Internal Out	Internal Net	International In	International Out	International Net				Other changes		Migration and other changes	End Population Estimate				2002-12	2007-12							
2011	2012	97,582	1,127	800	327	3,490	3,490	0	100	51	49				-18		31	97,940				268	21	13	192	226	494			
																						312	-33	32	198	197	510			

Lichfield		Start Population Estimate	Births	Deaths	Natural Change	Internal In	Internal Out	Internal Net	International In	International Out	International Net	Asylum Seekers Net	Prisoners	AF	Other unattributable	Oadby & Wigston adjustment	Migration & Other	End Population Estimate	Births	Deaths	Natural Change	Migration UK Net	Migration Overseas Net	Other	Migration & Other	Total Change		
2001	2002	93,229	837	991	-154	5,026	4,554	472	161	72	89	-30	5	27	41	0	604	93,679	2001	2002	837	991	-154	472	59	73	604	450
2002	2003	93,679	884	1,043	-159	5,386	4,534	852	168	109	59	0	-3	4	37	-2	947	94,467	2002	2003	884	1,043	-159					



Redditch

		Start Population Estimate	Births	Deaths	Natural Change	Internal In	Internal Out	Internal Net	International In	International Out	International Net	Asylum Seekers Net	Prisoners	AF	Other unattributable	Oadby & Wigston adjustment	Migration & Other	End Population Estimate	Births	Deaths	Natural Change	Migration UK Net	Migration Overseas Net	Other	Migration & Other	Total Change		
2001	2002	78,779	954	578	376	2,956	3,208	-252	108	274	-166	-30	3	-2	361	0	-86	79,069	2001	2002	954	578	376	-252	-196	362	-86	290
2002	2003	79,069	944	631	313	2,961	3,188	-227	94	180	-86	13	3	-1	382	0	84	79,466	2002	2003	944	631	313	-227	-73	384	84	397
2003	2004	79,466	1,009	632	377	2,904	3,264	-360	87	275	-188	4	5	-1	351	0	-189	79,654	2003	2004	1,009	632	377	-360	-184	355	-189	188
2004	2005	79,654	1,098	692	406	2,738	3,120	-382	235	184	51	3	-11	1	389	-1	50	80,110	2004	2005	1,098	692	406	-382	54	378	50	456
2005	2006	80,110	1,041	681	360	2,823	2,953	-130	679	334	345	2	3	0	388	-1	607	81,077	2005	2006	1,041	681	360	-130	347	390	607	967
2006	2007	81,077	1,161	620	541	2,823	3,332	-509	616	346	270	3	3	0	390	-1	144	81,762	2006	2007	1,161	620	541	-509	273	380	144	685
2007	2008	81,762	1,125	636	489	2,777	3,063	-286	630	346	270	3	3	-4	388	-2	462	82,713	2007	2008	1,125	636	489	-286	367	381	462	951
2008	2009	82,713	1,113	657	456	2,407	2,943	-536	355	301	54	0	10	-1	407	-1	-67	83,102	2008	2009	1,113	657	456	-536	54	415	-67	389
2009	2010	83,102	1,119	594	525	2,442	2,970	-528	315	229	86	0	0	0	393	0	-57	83,570	2009	2010	1,119	594	525	-528	86	385	-57	468
2010	2011	83,570	1,165	627	538	2,516	2,857	-341	371	227	144	0	6	1	400	0	210	84,318	2010	2011	1,165	627	538	-341	144	407	210	748
2011	2012	84,318	1,211	645	566	2,564	3,148	-584	334	211	123	0	0	0	400	0	-465	84,419	2011	2012	1,211	645	566	-584	123	407	-465	101

Annual Average 2001-11						2,735	3,090	-355	349	261	88	-1	0	0	385	-1	116		Annual Averages 2001-11							438	-355	87	384	116	554
------------------------	--	--	--	--	--	-------	-------	------	-----	-----	----	----	---	---	-----	----	-----	--	-------------------------	--	--	--	--	--	--	-----	------	----	-----	-----	-----

		Start Population Estimate	Births	Deaths	Natural Change	Internal In	Internal Out	Internal Net	International In	International Out	International Net	Other changes	Migration and other changes	End Population Estimate	2002-12	2007-12													
--	--	---------------------------	--------	--------	----------------	-------------	--------------	--------------	------------------	-------------------	-------------------	---------------	-----------------------------	-------------------------	---------	---------	--	--	--	--	--	--	--	--	--	--	--	--	--

2011	2012	84,318	1,211	645	566	2,564	3,148	-584	334	211	123	-4	-465	84,419															
------	------	--------	-------	-----	-----	-------	-------	------	-----	-----	-----	----	------	--------	--	--	--	--	--	--	--	--	--	--	--	--	--	--	--

Solihull

		Start Population Estimate	Births	Deaths	Natural Change	Internal In	Internal Out	Internal Net	International In	International Out	International Net	Asylum Seekers Net	Prisoners	AF	Other unattributable	Oadby & Wigston adjustment	Migration & Other	End Population Estimate	Births	Deaths	Natural Change	Migration UK Net	Migration Overseas Net	Other	Migration & Other	Total Change		
2001	2002	199,574	1,876	1,833	43	8,847	8,830	17	711	363	348	20	-6	2	30	0	411	200,028	2001	2002	1,876	1,833	43	17	368	26	411	454
2002	2003	200,028	1,964	1,957	7	9,170	9,065	105	708	359	349	59	-12	-2	3	-1	501	200,536	2002	2003	1,964	1,957	7	105	408	-12	501	508
2003	2004	200,536	2,015	1,837	178	9,082	8,826	256	576	431	145	25	12	-1	3	-1	439	201,153	2003	2004	2,015	1,837	178	256	170	13	439	617
2004	2005	201,153	2,044	1,815	229	8,382	8,541	-159	659	332	327	22	2	-10	-6	-1	175	201,557	2004	2005	2,044	1,815	229	-159	349	-15	175	404
2005	2006	201,557	1,994	1,775	219	8,781	8,323	458	534	401	133	3	-6	1	-13	-1	575	202,351	2005	2006	1,994	1,775	219	458	136	-19	575	794
2006	2007	202,351	2,185	1,809	376	9,388	8,981	407	509	453	56	0	-11	-5	-13	-1	443	203,170	2006	2007	2,185	1,809	376	407	56	-20	443	819
2007	2008	203,170	2,165	1,774	391	9,527	8,398	1,129	490	387	103	2	3	-2	-15	-3	1,217	204,778	2007	2008	2,165	1,774	391	1,129	105	-17	1,217	1,608
2008	2009	204,778	2,134	1,730	404	8,421	7,969	452	404	543	-139	2	2	-2	-24	-2	288	205,470	2008	2009	2,134	1,730	404	452	-137	-27	288	692
2009	2010	205,470	2,149	1,749	400	9,059	8,410	649	345	495	-150	4	-3	-1	-24	-2	459	206,329	2009	2010	2,149	1,749	400	649	-146	-44	459	859
2010	2011	206,329	2,291	1,802	489	8,366	8,326	40	573	565	8	6	20	1	-37	0	38	206,856	2010	2011	2,291	1,802	489	40	14	-16	38	527
2011	2012	206,856	2,386	1,839	547	9,212	9,279	-67	487	436	51	0	0	0	-37	0	38	206,856	2011	2012	2,386	1,839	547	-67	51	-7	-23	524

Annual Average 2001-11						8,902	8,567	335	551	433	118	14	-2	-1	-10	-1	455		Annual Averages 2001-11							274	335	132	-13	455	728
------------------------	--	--	--	--	--	-------	-------	-----	-----	-----	-----	----	----	----	-----	----	-----	--	-------------------------	--	--	--	--	--	--	-----	-----	-----	-----	-----	-----

		Start Population Estimate	Births	Deaths	Natural Change	Internal In	Internal Out	Internal Net	International In	International Out	International Net	Other changes	Migration and other changes	End Population Estimate	2002-12	2007-12													
--	--	---------------------------	--------	--------	----------------	-------------	--------------	--------------	------------------	-------------------	-------------------	---------------	-----------------------------	-------------------------	---------	---------	--	--	--	--	--	--	--	--	--	--	--	--	--

2011	2012	206,856	2,386	1,839	547	9,212	9,279	-67	487	436	51	-7	-23	207,380															
------	------	---------	-------	-------	-----	-------	-------	-----	-----	-----	----	----	-----	---------	--	--	--	--	--	--	--	--	--	--	--	--	--	--	--

Tamworth

		Start Population Estimate	Births	Deaths	Natural Change	Internal In	Internal Out	Internal Net	International In	International Out	International Net	Asylum Seekers Net	Prisoners	AF	Other unattributable	Oadby & Wigston adjustment	Migration & Other	End Population Estimate	Births	Deaths	Natural Change	Migration UK Net	Migration Overseas Net	Other	Migration & Other	Total Change		
2001	2002	74,596	878	597	281	2,956	3,280	-324	83	73	10	-30	0	0	-14	0	-358	74,519	2001	2002	878	597	281	-324	-20	-14	-358	-77
2002	2003	74,519	904	621	283	2,799	3,059	-260	105	97	8	0	-5	0	0	-1	-258	74,544	2002	2003	904	621	283	-260	8	-6	-258	25
2003	2004	74,544	1,001	553	448	2,591	3,067	-476	84	166	-82	0	5	0	-12	-3	-568	74,424	2003	2004	1,001	553	448	-476	-82	-10	-568	-120
2004	2005	74,424	898	536	362	2,692	2,776	-84	135	92	-4	0	-4	0	-14	-3	-62	74,724	2004	2005	898	536	362	-84	43	-21	-62	300
2005	2006	74,724	902	563	339	2,756	2,881	-125	265	122	143	0	8	0	-7	-4	15	75,078	2005	2006	902	563	339	-125	143	-3	15	354
2006	2007	75,078	954	541	413	2,906	3,071	-165	247	139	108	0	-6	0	-17	-4	-84	75,407	2006	2007	954	541	413	-165	108	-27	-84	329
2007	2008	75,407	1,029	546	483	2,722	2,961	-239	264	96	168	0	-4	0	13	-4	-66	75,824	2007	2008	1,029	546	483	-239	168	5	-66	417
2008	2009	75,824	1,038	576	462	2,652	2,715	-63	126	123	3	9	2	0	21	-3	-31	76,255	2008	2009	1,038	576	462	-63	12	20	-31	431
2009	2010	76,255	1,031	536	495	2,682	2,871	-189	98	95	3	10	-10	0	19	-1	-168	76,582	2009	2010	1,031	536	495	-189	13	8	-168	327
2010	2011	76,582	1,014	556	458	2,584	2,816	-232	189	132	57	0	4	0	26	0	-145	76,895	2010	2011	1,014	556	458	-232	57	30	-145	313
2011	2012	76,895	984	539	445	2,618	2,887	-269	135	86	49	0	0	0	26	0	-145	76,895	2011	2012	984	539	445	-269	49	-2	-222	223

Annual Average 2001-11						2,734	2,950	-216	160	114	46	-1	-1	0	2	-2	-173		Annual Averages 2001-11							402	-216	45	-2	-173	230
------------------------	--	--	--	--	--	-------	-------	------	-----	-----	----	----	----	---	---	----	------	--	-------------------------	--	--	--	--	--	--	-----	------	----	----	------	-----

		Start Population Estimate	Births	Deaths	Natural Change	Internal In	Internal Out	Internal Net	International In	International Out	International Net	Other changes	Migration and other changes	End Population Estimate	2002-12	2007-12													
--	--	---------------------------	--------	--------	----------------	-------------	--------------	--------------	------------------	-------------------	-------------------	---------------	-----------------------------	-------------------------	---------	---------	--	--	--	--	--	--	--	--	--	--	--	--	--

2011	2012	76,895	984	539	445	2,618	2,887	-269	135	86	49	-2	-222	77,118															
------	------	--------	-----	-----	-----	-------	-------	------	-----	----	----	----	------	--------	--	--	--	--	--	--	--	--	--	--	--	--	--	--	--

East Staffs

		Start Population Estimate	Births	Deaths	Natural Change	Internal In	Internal Out	Internal Net	International In	International Out	International Net	Asylum Seekers Net	Prisoners	AF	Other unattributable	Oadby & Wigston adjustment	Migration & Other	End Population Estimate	Births	Deaths	Natural Change	Migration UK Net	Migration Overseas Net	Other	Migration & Other	Total Change		
2001	2002	103,938	1,231	1,126	105	4,656	4,174	482	145	325	-180	-30	-5	7	170	0	444	104,487	2001	2002	1,231	1,126	105	482	-210	172	444	549
2002	2003	104,487	1,225	1,050	175	4,464	4,045	419	176	225	-49	34	820	-1	178	0	1,403	106,065	2002	2003	1,225	1,050	175	419	-15	999	1,403	1,578
2003	2004	106,065	1,245	1,096	149	4,518	4,070	448	196	221	-25	12	-24	0	178	-3	586	106,800	2003	2004	1,245	1,096	149	448	-13	151	586	735
2004	2005	106,800	1,265	1,077	188	4,200																						



Wyre Forest

		Start Population Estimate	Births	Deaths	Natural Change	Internal In	Internal Out	Internal Net	International In	International Out	International Net	Asylum Seekers Net	Prisoners	AF	Other unattributable	Oadby & Wigston adjustment	Migration & Other	End Population Estimate	Births	Deaths	Natural Change	Migration UK Net	Migration Overseas Net	Other	Migration & Other	Total Change				
2001	2002	96,929	959	1,080	-121	3,681	3,442	239	81	213	-132	-30	-6	1	-50	0	22	96,830	2001	2002	959	1,080	-121	239	-162	-55	22	-99		
2002	2003	96,830	982	1,000	-18	3,792	3,339	453	80	128	-48	3	-6	0	-64	-1	337	97,149	2002	2003	982	1,000	-18	453	-45	-71	337	319		
2003	2004	97,149	989	1,062	-73	3,683	3,345	338	72	241	-169	1	15	0	-36	-2	147	97,223	2003	2004	989	1,062	-73	338	-168	-23	147	74		
2004	2005	97,223	998	1,054	-56	3,650	3,136	514	158	181	-23	0	-11	0	-60	-2	418	97,585	2004	2005	998	1,054	-56	514	-23	-73	418	362		
2005	2006	97,585	955	934	21	3,414	3,385	29	326	230	96	0	0	0	-61	-4	60	97,666	2005	2006	955	934	21	29	96	-65	60	81		
2006	2007	97,666	1,085	1,036	49	3,749	3,389	360	247	236	11	0	-1	0	-64	-4	302	98,017	2006	2007	1,085	1,036	49	360	11	-69	302	351		
2007	2008	98,017	1,063	965	98	3,343	3,369	-26	273	154	119	0	3	0	-65	-3	28	98,143	2007	2008	1,063	965	98	-26	119	-65	28	126		
2008	2009	98,143	1,031	975	56	2,972	3,091	-119	214	231	-17	0	-3	0	-66	-1	-206	97,993	2008	2009	1,031	975	56	-119	-17	-70	-206	-150		
2009	2010	97,993	1,077	1,038	39	3,086	3,064	22	157	188	-31	0	-1	0	-79	0	-89	97,943	2009	2010	1,077	1,038	39	22	-31	-80	-89	-50		
2010	2011	97,943	1,067	988	79	3,180	3,145	35	207	158	49	0	5	0	-63	0	26	98,048	2010	2011	1,067	988	79	35	49	-58	26	105		
2011	2012	1,072	1,025	47	3,436	3,475	-39	147	127	20	0	0	0	0	-2	0	-21	98,074	2011	2012	1,025	47	-39	20	-2	-21	26			
Annual Average 2001-11						3,455	3,271	185	182	196	-15	-3	-1	0	-61	-2	105		Annual Averages 2001-11						7	185	-17	-63	105	112
		Start Population Estimate	Births	Deaths	Natural Change	Internal In	Internal Out	Internal Net	International In	International Out	International Net	Other changes	Migration and other changes	End Population Estimate	Annual Averages 2002-12															
															24	157	1	-58	100	124	64	-25	28	-55	-52	11				
2011	2012	98,048	1,072	1,025	47	3,436	3,475	-39	147	127	20				-2		-21	98,074	Annual Averages 2007-12											

LEP

		Start Population Estimate	Births	Deaths	Natural Change	Internal In	Internal Out	Internal Net	International In	International Out	International Net	Asylum Seekers Net	Prisoners	AF	Other unattributable	Oadby & Wigston adjustment	Migration & Other	End Population Estimate	Births	Deaths	Natural Change	Migration UK Net	Migration Overseas Net	Other	Migration & Other	Total Change				
2001	2002	1,811,756	23,135	17,731	5,404	70,575	76,888	-6,313	12,797	8,276	4,521	2,575	27	-5	3,052	0	3,857	1,821,017	2001	2002	23,135	17,731	5,404	-6,313	7,096	3,074	3,857	9,261		
2002	2003	1,821,017	23,839	17,997	5,842	71,406	78,108	-6,702	13,451	7,754	5,697	734	1	1	3,117	-10	5,459	1,832,318	2002	2003	23,839	17,997	5,842	-6,702	8,319	3,842	5,459	11,301		
2003	2004	1,832,318	24,731	17,763	6,968	69,219	78,173	-8,954	16,412	9,301	7,111	1,191	189	-81	3,183	-20	2,619	1,841,905	2003	2004	24,731	17,763	6,968	-8,954	8,302	3,271	2,619	9,587		
2004	2005	1,841,905	25,029	17,261	7,768	69,825	75,166	-5,341	16,403	8,367	10,036	697	131	-61	3,250	-25	8,687	1,858,360	2004	2005	25,029	17,261	7,768	-5,341	10,733	3,295	8,687	16,455		
2005	2006	1,858,360	25,234	16,877	8,357	70,818	77,084	-6,266	14,138	8,811	5,327	346	96	-11	3,442	-35	2,921	1,869,638	2005	2006	25,234	16,877	8,357	-6,266	5,673	3,514	2,921	11,278		
2006	2007	1,869,638	26,331	16,804	9,527	73,848	80,127	-6,279	16,142	9,471	6,671	468	134	17	3,495	-36	4,470	1,883,635	2006	2007	26,331	16,804	9,527	-6,279	7,139	3,610	4,470	13,997		
2007	2008	1,883,635	27,049	16,462	10,587	72,741	78,791	-6,050	14,271	6,193	8,078	624	-120	72	3,429	-40	5,993	1,900,215	2007	2008	27,049	16,462	10,587	-6,050	8,702	3,341	5,993	16,580		
2008	2009	1,900,215	27,321	16,228	11,093	70,733	75,134	-4,401	13,805	10,093	3,712	891	-83	38	3,459	-29	3,587	1,914,895	2008	2009	27,321	16,228	11,093	-4,401	4,603	3,385	3,587	14,680		
2009	2010	1,914,895	26,788	15,937	10,851	71,702	77,849	-6,147	14,037	8,106	5,931	535	-41	8	3,283	-9	3,560	1,929,306	2009	2010	26,788	15,937	10,851	-6,147	6,466	3,241	3,560	14,411		
2010	2011	1,929,306	27,529	15,853	11,676	71,616	76,909	-5,293	17,881	10,200	7,681	543	-72	-19	2,661	0	5,501	1,946,483	2010	2011	27,529	15,853	11,676	-5,293	8,224	2,570	5,501	17,177		
2011	2012	1,946,483	27,827	15,790	12,037	77,389	80,927	-3,538	13,854	8,502	5,352				-127		1,687	1,960,207	2011	2012	27,827	15,790	12,037	-3,538	5,352	-127	1,687	13,724		
Annual Average 2001-11						71,248	77,423	-6,175	14,934	8,457	6,477	1,049	100	-2	3,237	-20	4,665		Annual Averages 2001-11						8,807	-6,175	7,526	3,314	4,665	13,473
		Population Estimate	Births	Deaths	Natural Change	Internal In	Internal Out	Internal Net	International In	International Out	International Net	Other changes	Migration and other changes	Population Estimate	Annual Averages 2007-12															
															11,249	-5,086	6,669	2,482	4,066	15,314										
2011	2012	1,946,483	27,827	15,790	12,037	77,389	80,927	-3,538	13,854	8,502	5,352				-127		1,687	1,960,207	Annual Averages 2007-12											

North Warwickshire

		Start Population Estimate	Births	Deaths	Natural Change	Internal In	Internal Out	Internal Net	International In	International Out	International Net	Asylum Seekers Net	Prisoners	AF	Other unattributable	Oadby & Wigston adjustment	Migration & Other	End Population Estimate	Births	Deaths	Natural Change	Migration UK Net	Migration Overseas Net	Other	Migration & Other	Total Change				
2001	2002	61,788	619	608	11	2,982	2,952	30	107	71	36	0	6	0	-46	0	26	61,825	2001	2002	619	608	11	30	36	-40	26	37		
2002	2003	61,825	588	638	-50	3,067	3,062	5	99	87	12	0	-5	0	-38	0	-26	61,749	2002	2003	588	638	-50	5	12	-43	-26	-76		
2003	2004	61,749	627	638	-11	3,051	2,988	63	71	83	-12	0	9	0	-28	-1	31	61,769	2003	2004	627	638	-11	63	-12	-20	31	20		
2004	2005	61,769	635	609	26	3,023	2,881	142	80	72	8	2	-3	0	-50	0	99	61,894	2004	2005	635	609	26	142	10	-53	99	125		
2005	2006	61,894	614	623	-9	2,848	2,853	-5	176	98	78	1	-1	0	-37	-1	35	61,920	2005	2006	614	623	-9	176	79	-39	35	26		
2006	2007	61,920	626	604	22	2,973	3,083	-110	138	100	38	3	-1	0	-32	-1	-103	61,839	2006	2007	626	604	22	-110	41	-34	-103	-81		
2007	2008	61,839	644	623	21	3,071	2,980	91	145	98	47	0	0	0	-28	0	108	61,968	2007	2008	644	623	21	91	47	-30	108	129		
2008	2009	61,968	644	561	83	2,770	2,636	134	115	129	-14	0	-3	0	-44	0	73	62,124	2008	2009	644	561	83	134	-14	-47	73	156		
2009	2010	62,124	658	608	50	2,747	2,747	0	97	101	-4	0	-5	0	-19	0	-108	62,066	2009	2010	658	608	50	-108	-4	-24	-108	-58		
2010	2011	62,066	669	603	66	2,744	2,801	-57	136	99	37	0	6	0	-29	0	-43	62,089	2010	2011	669	603	66	-43	37	-23	-43	23		
2011	2012	62,089	666	603	66	2,744	2,801	-57	136	99	37	0	6	0	-29	0	-43	62,089	2011	2012	666	603	66	-43	39	-14	92	111		
Annual Average 2001-11						2,928	2,906	21	116	94	23	1	0	0	-35	-1	9		Annual Averages 2001-11						21	21	23	-35	9	30
		Start Population Estimate	Births	Deaths	Natural Change	Internal In	Internal Out	Internal Net	International In	International Out	International Net	Other changes	Migration and other changes	End Population Estimate	Annual Averages 2002-12															
															22	25	24	-33	16	38	48	31	21	-28	24	72				
2011	2012	62,089	666	647	19	3,045	2,978	67	94	55	39				-14		92	62,200	Annual Averages 2007-12											

Stratford

		Start Population Estimate	Births	Deaths	Natural Change	Internal In	Internal Out	Internal Net	International In	International Out	International Net	Asylum Seekers Net	Prisoners	AF	Other unattributable	Oadby & Wigston adjustment	Migration & Other	End Population Estimate	Births	Deaths	Natural Change	Migration UK Net	Migration Overseas Net	Other	Migration & Other	Total Change		
2001	2002	111,551	1,063	1,203	-140	6,757	5,717	1,040	293	384	-91	-30	-12	8	-68	0	847	112,258	2001	2002	1,063	1,203	-140	1,040	-121	-72	847	707
2002	2003	112,258	1,091	1,186	-95	6,800	5,867	933	260	288	-28	5	-4	8	-85	0	829	112,992	2002	2003	1,091	1,186	-95	933	-23	-81	829	734
2003	2004	112,992	1,107	1,210	-103	6,560	5,																					



