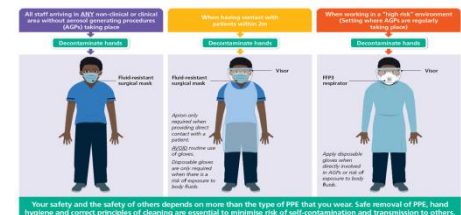




Infection Prevention and Control Champions



Infection prevention and Control

- To protect patients/residents and staff from infection it is important that the risk is eliminated, reduced or managed effectively.
- The acquisition of infection as a result of hospital or other health care treatment has important implications both for the patients/residents affected and the organisation concerned.



Infection prevention and Control

- HCAI's are seen as an important quality indicator and as such their prevention is key to ensuring that services provided by the NHS/care providers are of a high quality.



IPC Champions

A role model for influencing their knowledge and best practice within their workplace, influencing colleagues practice

Champions can focus on specific areas of IPC and aim to promote and maintain a culture in which IPC is of the highest **importance**:

Someone who is passionate and enthusiastic about safe infection prevention and control, constantly striving to protect patients, residents, staff and visitors from infection transmission.





I was able to realise the importance of Infection Prevention in all environments and the implications of poor hand hygiene and thorough aseptic and cleaning procedures as well as the correct wearing of PPE.

As a link worker at BDH it gave me the knowledge of what was required to apply to the role at MHH and although the audits were slightly different I adapted accordingly.

My link worker position, in Dental, really helped me in both of my seconded roles. Having completed the Link Nurse worker training.....



Best Care
Healthy Communities

IPC Champions

- The IPC Champion will help create and maintain an environment, which will minimise the risk of infection and ensure the safety of the patients/residents, relatives and fellow health care workers



IPC Champions

- The IPC champion will be an essential link for the care home and IPC
- Challenge poor practice in relation to IPC
- Monitor appropriate use of PPE and its safe disposal
- Challenge non-compliance with PPE
- Complete regular audits and support action plans.



IPC Champions

- Will ensure effective infection prevention and control and decontamination are embedded into everyday practice.



SO.....

**Any
Questions**



*Best Care
Healthy Communities*