

FAMILY FOCUSED HOUSING DEVELOPMENTS

BIRMINGHAM

NOVEMBER 2014

SHENLEY, BOURNVILLE VILLAGE TRUST



Promoter: Bournville Village Trust

Dwellings: 167 homes

Site area: 3.7ha

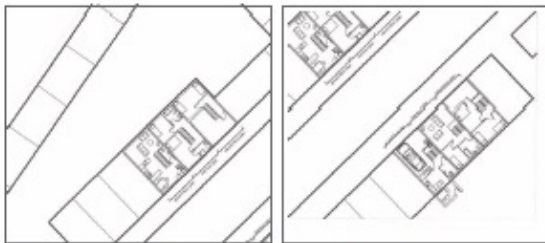
Density: 45dph



Black Haynes Road



ICKNIELD PORT LOOP



MEWS HOUSES

TERRACED HOUSES



RESIDENTIAL YIELDS

Illustrative

	Density u/ha	From to			Totals
		Low density	Medium	High	
		40	65	120	
		50	75	160	
1 Wiggin Street		0	191	0	191 to...
		0	221	0	221 units
2 Freeth Street		20	14	12	46 to...
		26	16	16	57 units
3 Middleway		120	65	0	185 to...
		150	75	0	225 units
4 Dam		0	0	55	55 to...
		0	0	74	74 units
5 Loop		0	0	52	52 to...
		0	0	69	69 units
6 Rotton Park Street North		0	150	37	187 to...
		0	173	50	222 units
7 Rotton Park Street South		0	130	90	220 to...
		0	150	120	270 units
TOTALS					
	From	140	549	246	936 to...
	To	176	634	329	1138 units

HOUSING MIX

Illustrative

	DENSITY u/ha	Apartments			TOTAL	Houses			TOTAL	TOTAL
		1bed	2bed	3bed		2bed	3bed	4bed		
ASSUMPTIONS										
Lower Density Housing	40				0%	30%	40%	30%	100%	100%
Medium Density	65				0%	15%	50%	35%	100%	100%
High Density	120	30%	30%	10%	70%	10%	10%	10%	30%	100%
1										
Wiggin Street	40	0	0	0	0	0	0	0	0	0
	65	0	0	0	0	29	96	67	191	191
	120	0	0	0	0	0	0	0	0	0
2										
Freeth Street	40	0	0	0	0	6	8	6	20	20
	65	0	0	0	0	2	7	5	14	14
	120	4	4	1	8	1	1	1	4	12
3										
Middleway	40	0	0	0	0	36	48	36	120	120
	65	0	0	0	0	10	33	23	65	65
	120	0	0	0	0	0	0	0	0	0
4										
Dam	40	0	0	0	0	0	0	0	0	0
	65	0	0	0	0	0	0	0	0	0
	120	17	17	6	39	6	6	6	17	55
5										
Loop	40	0	0	0	0	0	0	0	0	0
	65	0	0	0	0	0	0	0	0	0
	120	16	16	5	36	5	5	5	16	52
6										
Rotton Park Street	40	0	0	0	0	0	0	0	0	0
	65	0	0	0	0	22	75	52	150	150
North	120	11	11	4	26	4	4	4	11	37
7										
Rotten Park Street	40	0	0	0	0	0	0	0	0	0
	65	0	0	0	0	20	65	46	130	130
South	120	27	27	9	63	9	9	9	27	90
		74	74	25	173	149	355	259	764	936
		18%				82%				

Promoter: Canal and Rivers Trust & HCA

Dwellings: 1150 homes

Site area: 17.6ha

Density: 65dph

EGGHILL, LONGBRIDGE



Promoter: Birmingham Municipal Housing Trust

Dwellings: 402 homes

Site area: 8.25ha

Density: 49dph



Egghill



SHARD END CRESCENT



Promoter: Barratt Homes

Dwellings: 191 homes

Site area: 3.92ha

Density: 53dph (excluding church and retail areas)



Shard End



NEWTOWN, ASTON



Promoter: Birmingham Municipal Housing Trust

Dwellings: 31 homes

Site area: 0.72ha

Density: 43dph (all 2-5 bed houses)



Newtown



