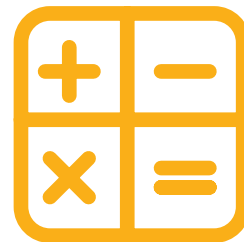


Children and Young People Directorate: Education



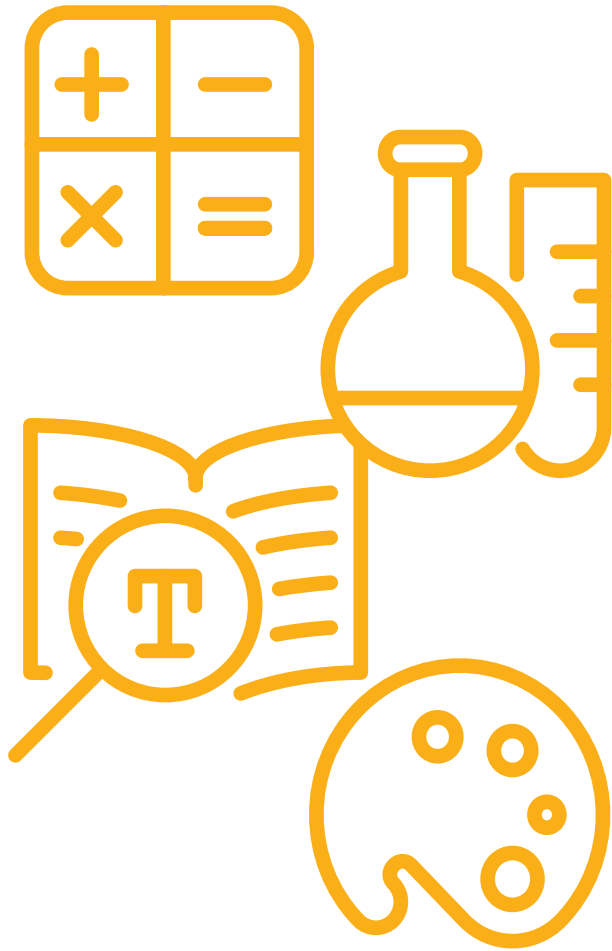
Core Offer

2018-19



A great city to grow up in

Introduction



This updated document sets out the range of education services provided by Birmingham City Council to schools and settings, children and young people across Birmingham.

On page 12 it sets out how the strategic partnership between Birmingham City Council and the Birmingham Education Partnership works to improve outcomes for children and young people. In delivering our core offer to you, we commit to working in close partnership to ensure that every young person receives the best possible education, drawing on the rich diversity, cultural heritage and tremendous education expertise our City has to offer.

Our City Council education services continue to adapt to a fast-changing education landscape and move forward to meet the challenges of delivering quality services with diminished resources.

We welcome feedback and suggestions for improvement on how we are communicating and delivering our services on our journey of continuous improvement.

**Colin Diamond CBE,
Corporate Director,
Children and Young People**



This document outlines:

- i.** the education services that Birmingham City Council delivers with the Birmingham Education Partnership
- ii.** an overview of our key priorities for 2018-19
- iii.** the management structure in place to deliver these services
- iv.** the governance structure of key forums, meetings and partnerships to deliver and monitor these services

We communicate regularly through the weekly Birmingham City Council School Noticeboard available at www.birmingham.gov.uk/schoolnoticeboard and the Birmingham

Education Partnership newsletters available at www.bep.education/about/bep-newsletters. We also share updates via Twitter @bcceducation and @bepvoice.

You can contact us at any time using education@birmingham.gov.uk and office@bep.education

You can contact Birmingham City Council via the Children’s Advice and Support Service (CASS) on **0121 303 1888** and the Birmingham Education Partnership on **0121 285 0924**.

Birmingham City Council also offers additional support services, details of which can be



found through our Traded Services Directory available at www.birmingham.gov.uk/tradingforeducation and through www.birminghameducationsupportservices.co.uk



Birmingham City Council Education Services

Alternative Provision, Attendance and Independent Education*

Tracking, monitoring and taking appropriate action in respect of children who are out of school. The service assesses, places and supports KS4 pupils in alternative education provision and works to improve the oversight and advice to parents and carers who electively home educate their children. The service works with all schools and education providers to ensure that safeguarding, and attendance procedures are best practice, and that their obligations to vulnerable groups are fulfilled. We are proactive in our work to quality assure schools and providers. We have a dedicated team who support School Age Pregnant Parents and the Gypsy, Roma and Traveller community; and work directly with schools and families in the statutory enforcement of pupil attendance using penalty notices and prosecution in the Magistrates Courts.

In this document:
* denotes a partially traded service and
** denotes a fully traded service.

Cityserve**

Cityserve is a multi-award winning civic focussed foodservice, feeding over 70,000 children a day. It supports the nutritional wellbeing of students and works with students to understand what they want to eat and then make it School Food Compliant. Cityserve can provide both an all-inclusive support package or management support for catering in-house, including procurement, menu development, finance, marketing, customer service and legislative compliance.

Communication and Autism Team (CAT)*

The Communication and Autism Team is an educational service working in schools and settings to support children and young people on the Autistic Spectrum (AS) and its associated difficulties, including the reduction of stress and anxiety amongst children and families with an AS. Through the application of Autism Education Trust's National Autism Standards the CAT team develop schools capacity to support these children and young people.



Early Years

Ensuring there is sufficient, good quality childcare for children aged 0-14 (16 with SEN) and access to early education places for all 3 and 4 year olds and targeted 2 year olds. There is a range of support that includes information, advice, challenge and CPD opportunities to the workforce. The Service oversees the quality assurance of provision and integration of services.

Early Years Inclusion Support (EYIS)

Ensuring very young and pre-school children with SEND (0-5) receive timely assessment, early intervention and co-ordinated multi-agency Team Around the Child (TAC) support for their special educational needs, either at home or in local settings.

Education Infrastructure*

Fulfilling the Council's statutory duty for sufficient school places through the delivery of the City's basic need programme. The service area is responsible for the annual school place planning cycle which includes forecasting and publishing additional place requirements to meet basic need. This includes carrying out statutory school organisation and the delivery of the schools capital programme. The service co-ordinates school status change including the academy conversion process and provides contracts management support to all Private Finance Initiative (PFI) and Building Schools for the Future (BSF) schools. The service also provides guidance and support to schools on statutory compliance, the effective maintenance of school buildings, including planned

maintenance and emergency repairs to prevent school closure.

Educational Psychology*

Providing professional psychological services for children, young people and families in a wide range of educational and community settings. The service uses the expertise of psychological theory and research to develop an understanding of even the most complex situations, addressing a wide range of child and adolescent developmental issues, including special educational needs.

Exclusions

Providing a level of support and challenge to schools and academies when head teachers and principals make the decision to



permanently exclude a young person. Team members attend all governors meetings and independent review meetings where permanent exclusion is considered, ensuring that legislation is adhered to and that young people and families have a voice and are aware of their rights.

Full Participation

Working with all schools and education providers, including post-16, to secure appropriate destinations and pathways for all young people, preventing and reducing numbers of young people who become NEET (Not in Education, Employment or Training), in the context of Raising the Participation Age. The service offers a range of advice and support in relation to school-business links,

independent careers information, advice and guidance and employability skills.

Pupil and School Support*

Working with schools and other educational settings to help pupils with cognition and learning difficulties and other vulnerable groups progress and achieve to the best of their abilities.

Safeguarding and Building Resilience in Schools*

Working with schools and colleges to ensure that all children and young people in Birmingham learn in an environment that is safe and promotes their overall wellbeing.

Sensory Support*

Working with children and young people with

hearing or vision impairment at all stages of their educational development; in homes, early years settings, mainstream schools, special schools and colleges. The service aims to minimise the impact of a sensory impairment on a pupil's learning and development and to raise attainment.

School Admissions*

Offering advice and guidance on the school admissions and appeals process and school attendance.

School and Governor Support**

School and Governor Support (S&GS) is a fully traded service that provides professional support and advice to subscribing schools and academies on all aspects of school leadership, management and governance. The service



also provides a comprehensive programme of governor training on a “pay as you go” basis.

Services offered include:

- school support, advice and guidance
- support for governance
- conflict resolution
- supporting exceptional/unforeseen circumstances
- ‘pay as you go’ training for governors

S&GS fulfils a number of statutory and core functions on behalf of the Local Authority including those that relate to the governance of maintained schools.

School Governance Oversight

Supporting and monitoring to ensure that there are robust and effective governance arrangements in place and working effectively in our schools.

Special Educational Needs and Disability Information, Advice and Support Service (SENDIASS)

Providing comprehensive, quality and impartial advice to families, parents and children in relation to education, health and care needs, processes and decisions.

Special Educational Needs Assessment and Review (SENAR)

Co-ordinating the statutory assessment process that can lead to an Education Health and Care plan, High Needs funding and placements in mainstream schools, resource bases, special schools and alternative provision.

The Birmingham Special Educational Needs and Disability (SEND) Local Offer (www.birmingham.gov.uk/localoffer) provides information about services for children and young people across the city to make it easier to find out what you need to know.

Travel Assist

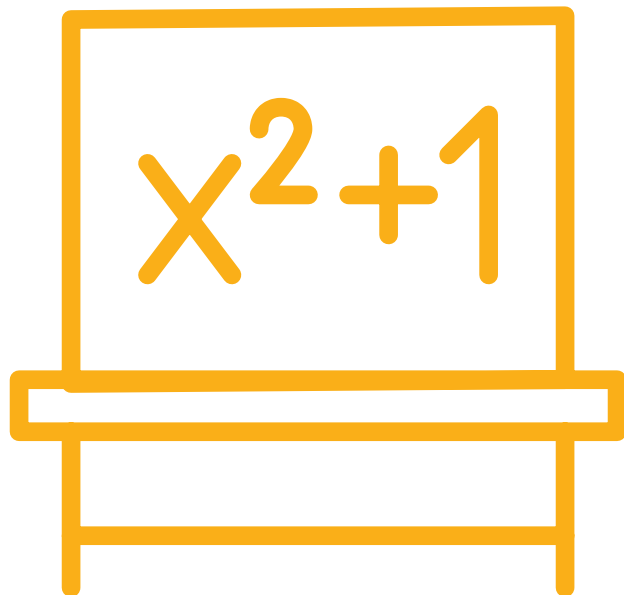
Assessing eligibility and organising travel, as appropriate, between home and school. The service arranges transport for over 4,200 pupils on 900 routes, including those with special educational needs and/or disability.

Virtual School for Looked After Children and Looked After Children Education Service (LACES)

Overseeing the education of Birmingham children in care, as if they were in a single school. The service provides quality educational advice and support for children in care and their carers in early years, schools, post-16 education and homes.



School Support Services (Outside of Education Services Management)



Education Safety Services*

Birmingham City Council Education Safety Services are experienced in the provision of safety services to schools, having done this in Birmingham for many years. Our services are specifically tailored to meet the health and safety needs of schools including provision of tools and knowledge to demonstrate health and safety compliance and access to a variety of health and safety training courses.

School Finance

Determining budgets for maintained schools (primary, secondary and special) and for all providers of early years provision (nursery schools, primary schools with nursery classes, academies with nursery classes and private, voluntary and independent providers).

Schools Financial Services*

Monitoring financial probity in schools and providing a traded service that offers a comprehensive range of financial and business support packages to maintained schools that

enables head teachers and governors to fulfil their financial management obligations.

HR and Employee Relations*

Provides a comprehensive service that enables schools to meet their statutory, strategic and contractual obligations.

Legal Services*

Provides legal advice and assistance to both schools and the CYP Directorate on statutory obligations, government guidance, disputes, contract and land concerns, employment issues, data law and other legal issues which may affect schools.

Birmingham City Council provides a range of other traded services. Full details are available at www.birmingham.gov.uk/tradingforeducation and through www.birminghameducationsupportservices.co.uk

Children and Young People Priorities 2017/18

1. Securing a good school place for children in the city

2. Raising attainment and closing gaps for children across Birmingham

3. Ensuring children and young people with SEND have their needs met in appropriate provision

4. Ensuring children are safe and develop resilience

5. Preparing young people with the skills they need for life




Children and Young People Management Structure


April 2018




Colin Diamond
Corporate Director,
Children and
Young People




Sarah Sinclair
Interim Assistant
Director, C&YP
Commissioning




Anne Ainsworth
Assistant Director
Education Strategy




Austin McNamara
Acting Assistant
Director, SEND



Julie Young
Interim Assistant
Director, Education
Safeguarding



Lindsey Trivett
Head of Early Years




Parminder Garcha
Full Participation
Lead Officer




**Lesley Baker/
Nik Morgan**
Communication &
Autism Team Manager




Razia Butt
Resilience Adviser
(Independent)



Nasreen Hussain
Head of SENDIASS




Jaswinder Didiyally
Head of Education
Infrastructure



David Bridgman
Head of SENAR



Jon Needham
Schools Safeguarding
Adviser



Heather Wood
Service Lead – Pupil &
School Support




David Bishop
Head of Alternative
Provision and
Independent Education



Andrew Wright
Head of Virtual School
and School Exclusions



Dale Wild
Head of Cityserve




Jennifer Langan
Travel Assist Manager




Alan Michell
Interim Head of
School Admissions



**Cherry Thomas/
Cathy Spruce**
Team Leads
Sensory Support



Amanda Daniels
Principal Educational
Psychologist



Karen Davies
School and Governor
Support Manager



BEP Structure – April 2018

BEP Board



Baroness Estelle Morris
Chair

Staff Leadership Team



Tim Boyes
Chief Executive,
Birmingham Education
Partnership (BEP)



Tracy Ruddle
Director of Continuous
School Improvement



John Garrett
Director of Operations

The Board

Includes four Birmingham school or MAT teachers elected by their peers.

System Leadership and Innovation Committee

Meeting half-termly this group is made up of head teacher representatives invited from every consortium and network plus representatives from nursery, special and selective schools.

School Improvement Advisory Board

Professor David Woods CBE
Viv Randall OBE
Paul Roberts
Elaine Kenny
Cheryl Millard
Chris Owen

Senior system leaders advising the Director for Continuous School Improvement and the BEP Board on school improvement strategy and programmes for intervention in Schools Causing Concern.

Engagement Leads and Priority Partners

Engagement leads are active in outreach connecting potentially isolated schools according to need. Priority partners are proven school leaders working with identified priority schools, vulnerable by data, leadership or Ofsted judgement.



Birmingham City Council School Improvement Arrangements



Colin Diamond

Corporate Director,
Children and Young People



Tim Boyes

Chief Executive, Birmingham
Education Partnership (BEP)



Key Local Authority Support Function

- School Governance
- School Place Planning
- Admissions/attendance
- SEND
- Safeguarding
- School Transport
- Virtual School for Looked After Children

School Improvement Governance

- Manages and evaluates the commissioned contract with BEP
- Reviews risk and assessment reports concerning all education providers
- Identifies resources to address emerging priorities
- Receives local intelligence through:
 - Cross cutting meetings
 - Data management
 - Contract management group
 - Education Improvement Group – attended by Ofsted, Regional Schools Co-ordinator, BEP and BCC
 - Partnership links with RSC and Academy Trusts

Birmingham Education Partnership

- Commissioned responsibility for LA's statutory school improvement functions, including support and intervention and Schools Causing Concern
- Accountable for effectiveness of partnership and key performance measures
- Oversees deployment of school improvement resources eg NLGs, LLEs, Teaching School Alliances and Priority Partners
- Provides a development and training offer
- Leads on Families of Schools activities and school peer review groups for all schools



responsibility for co-ordinating parties to deliver effective school improvement

Education Governance Meetings and Forum Structure – April 2018



Colin Diamond
Corporate Director,
Children and
Young People



**Councillor
Carl Rice**
Cabinet Member
for Children,
Families and
Schools



TBA
Chair, Education
and Vulnerable
Children, Overview
and Scrutiny
Committee

BIRMINGHAM CITY COUNCIL CABINET

OVERSIGHT & GOVERNANCE



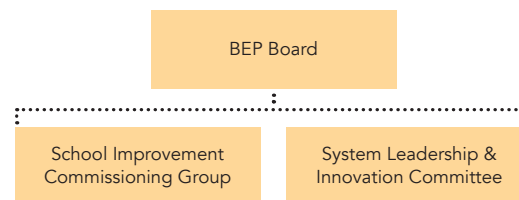
REGULATORY PARTNERS



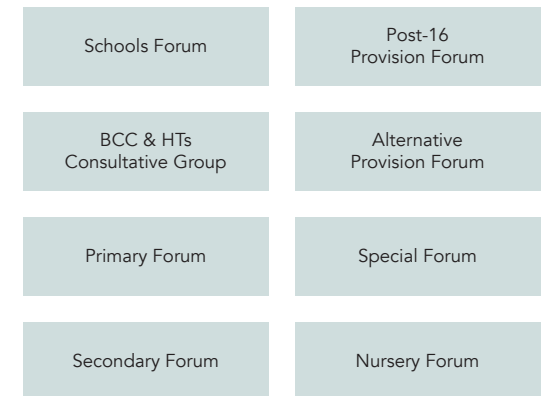
BIRMINGHAM CITY COUNCIL



BIRMINGHAM EDUCATION PARTNERSHIP (BEP)



SCHOOL ENGAGEMENT FORUMS



OVERSIGHT & GOVERNANCE



Making a positive difference every day to people's lives

Email

education@birmingham.gov.uk

Twitter

[@BCCEducation](https://twitter.com/BCCEducation)

