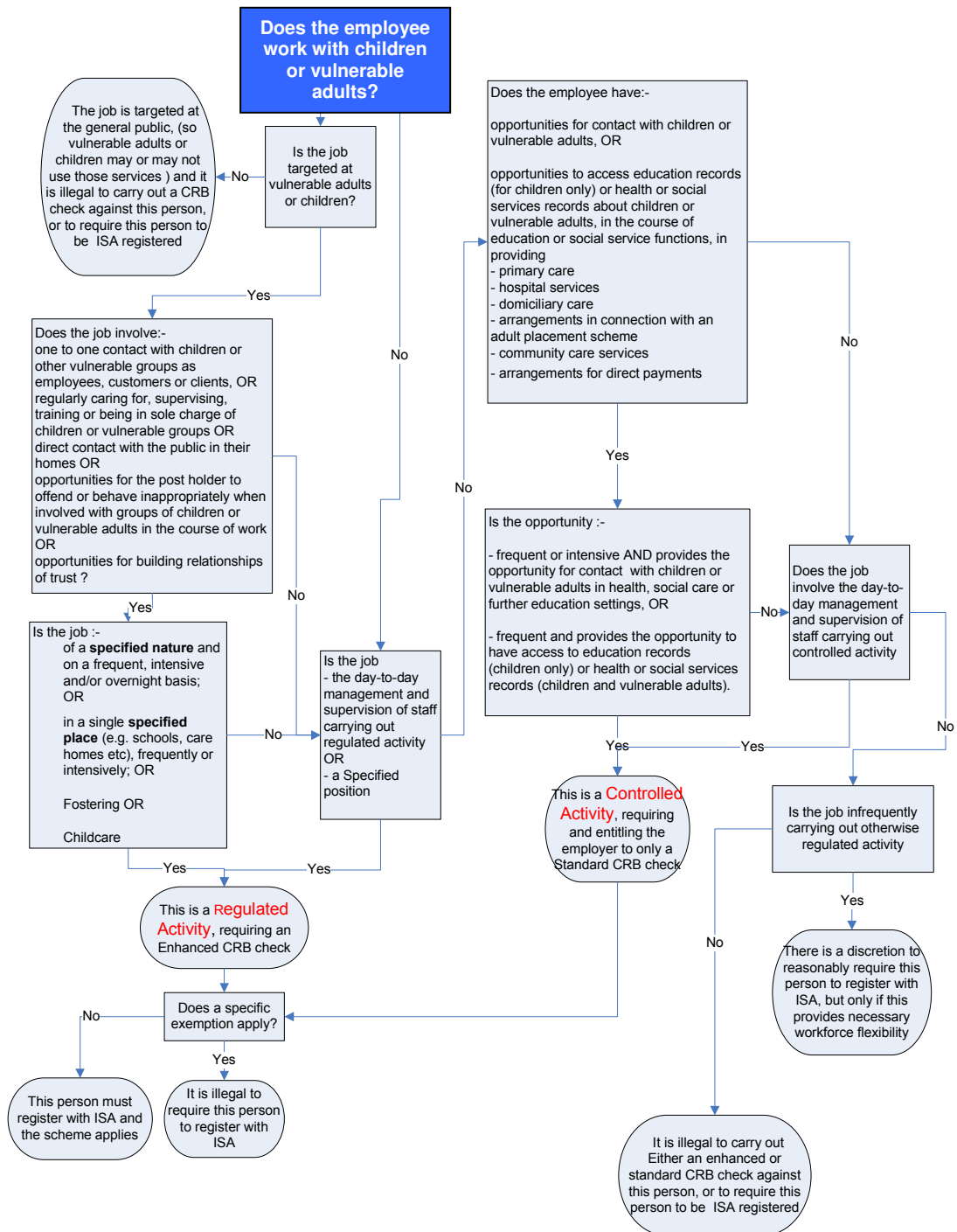


CRB Eligible Positions Flowchart January 2012



GLOSSARY

Child :

Under 18 and not in their workplace

Enhanced disclosure,

which checks these databases, provides additional information from local police, and will, if requested, also check whether an individual is on the relevant barred list and whether they are ISA registered.

Frequently: Health and personal care services - once a month or more at the same site. All other services - once a week or more at the same site, in a reasonably substantial activity, providing the opportunity to build a relationship of trust, over time, with a member or members of the relevant vulnerable group.

Intensively: on four days or more in a single month in a reasonably substantial activity, providing the opportunity to build a relationship of trust, over time, with a member or members of the relevant vulnerable group.

Specified Activity:

- Teaching, training or instruction, care or supervision of **children** or **vulnerable adults** provided **frequently, intensively** or overnight. Examples: sports coaches, football referees, private tutors, teachers, childcare workers, youth workers, probation officers, prison officers and health and social care workers.
- Advice or guidance wholly or mainly to **children** on a **frequent, intensive** or overnight basis that relates to their physical, emotional or educational wellbeing Examples: mentors, counsellors, careers advisers and ChildLine advisors
- any form of assistance, advice or guidance provided for **vulnerable adults** on a **frequent** or **intensive** basis.
- Any form of healthcare treatment or therapy provided to a **child** or **vulnerable adult**
- Fostering – except where the visit lasts less than 28 days, the host families are volunteers, and the child's family have agreed the selection of the host family
- Registered Childminders
- Driving a vehicle **frequently** or **intensively** solely for the purpose of conveying **children** or **vulnerable adults** and their carers.
- Moderating an online chatroom that is likely to be used wholly or mainly by **children** or **vulnerable adults**, for the purposes of protecting children or vulnerable adults, AND frequently or intensively:
 - monitoring the content of a service OR
 - controlling access to or use of the service, where they have access to content and contact with service users, and/or have the power to remove content or stop it being added.

Specified Exceptions

NB:-the employer or organiser of the activity is still entitled to check the ISA registration status of the employee.

- **Infrequent activity** which would otherwise be regulated activity but is not frequent, or does not meet the intensive or overnight conditions
- **Private arrangements** organised by parents employing a worker in regulated activity in a private capacity.
- **Under-16s undertaking regulated activity**
- **Activity provided to under-16s in the workplace** The employer has discretion to decide which of its employees to check and will have agreed a risk assessment process with the work experience placement provider. (Separate sector-specific

guidance will cover this in more detail.) An exception is chaperones of children who work in entertainment, who are required to register with the ISA, and those who engage chaperones will be required to check their ISA registration.

- **16-17 year-olds in higher education** under-16s in higher education -only when the higher education institution has undertaken a risk assessment and put in place suitable arrangements in the light of the result of the risk assessment.
- **16–17-year-olds in mixed-age sport and leisure** in a setting not specifically geared to that age group alone. This exemption applies unless the group becomes wholly or mainly composed of 16–17-year-olds.
- **Work carried out in a number of specified settings** Regulated activity where a worker or volunteer works with children or vulnerable adults in a number of ‘specified places’ (such as schools), but works infrequently in each. Even if the totality of work carried out in the various settings is frequent or intensive, there is no requirement for registration.
- **Regulated activity by 16–18-year-olds as part of their studies** as part of programmes arranged by an educational institution, up to the end of the academic year in which the individual has their 18th birthday.
- **Regulated activity carried out by visitors in relation to visiting vulnerable groups from outside England, Wales or Northern Ireland** only visitors from outside England, Wales or Northern Ireland for up to three months.
- **Host families for school exchanges** for less than 28 days; the adults are volunteers; and the child’s parents have agreed the selection of the adults who will provide accommodation and care for the child.

Specified place

- Schools,
- Nursery Schools
- Children’s Centres
- Pupil Referral Units
- Childcare premises
- Nurseries
- Children’s Homes
- Adult Care homes.

Specified position

Individuals whose post suggests they might be expected to be suitable to work with children or vulnerable adults. Examples:

- governors, their secretaries and clerks, of educational establishments which exclusively or mainly provide full-time education to under-18s
- local councillors who discharge any education or social services functions
- the chief executive
- management committees of pupil referral units
- members of fostering and adoption panels
- members of Local Safeguarding Children Boards
- anyone who operates, establishes or maintains a ContactPoint database or otherwise exercises functions in relation to the management or control of a ContactPoint database
- strategic directors of Children’s services and Adults social services

Standard disclosure,

checks national and local police databases

Vulnerable adult

Anyone aged 18 or over, who

- is living in
 - residential accommodation, such as a care home or a residential special school OR
 - sheltered housing OR
- is receiving
 - domiciliary care in their own home OR
 - is receiving any form of healthcare OR
- is detained in lawful custody (in a prison, remand centre, young offender institution, secure training centre or attendance centre, or under the powers of the Immigration and Asylum Act 1999) OR
- is under the supervision of the probation services OR
- is receiving a specified welfare service, namely the provision of support, assistance or advice by any person, the purpose of which is to develop an individual's capacity to live independently in accommodation or support their capacity to do so OR
- is receiving a service or participating in an activity for people who have particular needs because of their age or who have any form of disability OR
- is an expectant or nursing mother living in residential care OR
- is receiving direct payments from a local authority or health and social care trust in lieu of social care services, OR
- requires assistance in the conduct of their own affairs.

For further information please visit <http://www.homeoffice.gov.uk/agencies-public-bodies/crb/>